

## MEM Two-hole mixer with individual flanges - Chrome

MEM

32 815 682 Product version from 3/1/2023



- 9-1/2" Projection
- Swiveling spout 360°
- Optional restricted swivel available with swivel limiter set 12 820 970 90
- Aerated stream
- Total height 14"
- Height to aerator/spout outlet 8-1/2"
- Individual flanges 2-3/8" x 2-3/8"
- Spout hole diameter 1-3/8"
- Single-lever mixer hole diameter 1-3/8"
- 2 x pressure hose with 3/8" compression fitting
- Water flow rate limited to max. 1.5 gpm
- lead-free
- This product can help a building meet the requirements of Green Building Rating Systems, e.g. LEED®, BREEAM®, DGNB

(ADA)

Flexible positioning of components.

	Chrome	32 815 682-00 0010
	Brushed Platinum	32 815 682-06 0010
	Platinum	32 815 682-08 0010
	Durabronze (23kt Gold)	32 815 682-09 0010
	Dark Chrome	32 815 682-19 0010
	Brushed Durabronze (23kt Gold)	32 815 682-28 0010
	Matte Black	32 815 682-33 0010
	Brushed Champagne (22kt Gold)	32 815 682-46 0010
	Champagne (22kt Gold)	32 815 682-47 0010
	Brushed Chrome	32 815 682-93 0010
	Brushed Dark Platinum	32 815 682-99 0010

### Recommended article

**Swivel limiter set -**

12 820 970 90



### Recommended article

**Soap dispenser with flange - Chrome**

82 444 970-00



### Recommended article

**AIR SWITCH operating button, trim parts only - Chrome**

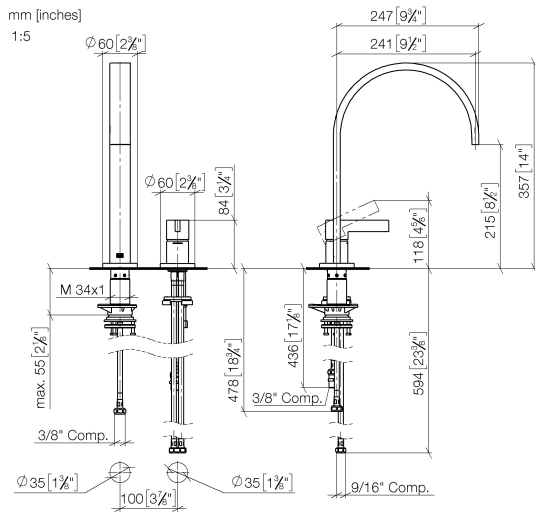
10 713 970-00



**MEM Two-hole mixer with individual flanges - Chrome**

MEM

32 815 682 Product version from 3/1/2023

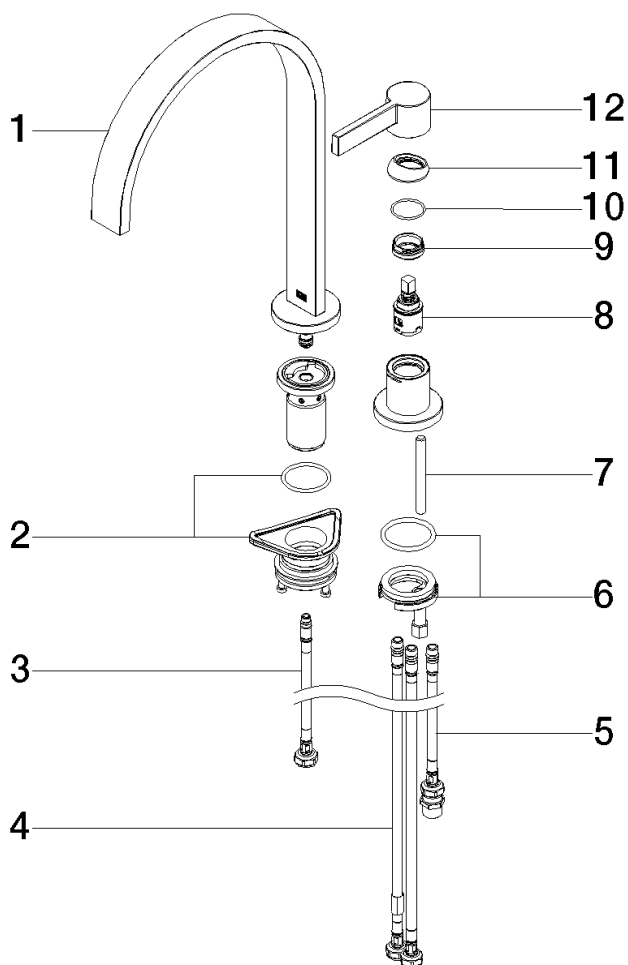


**Codes & Standards**

ADA	California Energy Commission (CEC)	NSF372	NSF61
-----	--	--------	-------

**Certificates and sustainability**

IAPMO\_6397 IAPMO\_N-4976



## Spare parts list

Number	Item Number	Designation	Number of units	Lead time
1	90 28 22 391 00-00	spout	1.00	10
3	04 30 04 100 00 90	hose	1.00	2
11	09 28 30 026-00	cover	1.00	10
12	90 20 87 003 00-00	handle	1.00	10
6	04 30 11 085 97 90	fixing set	1.00	2
8	90 15 05 042 00 90	cartridge	1.00	2
7	09 31 11 011 90	pin	1.00	2
5	04 30 04 104 00 90	hose	1.00	2
4	04 30 04 107 00 90	hose	2.00	2
9	09 24 04 266 90	nut	1.00	2
10	09 14 10 091 90	seal	1.00	2
2	90 30 10 057 00 90	fixing set	1.00	2