

META SQUARE Two-hole mixer with individual flanges - Brushed Champagne (22kt Gold)

META SQUARE

32 815 861 Product version from 10/1/2024



- 9-1/4" Projection
 - Swiveling spout 360°
 - Optional restricted swivel available with swivel limiter set 12 820 970 90
 - Aerated stream
 - Total height 13-1/4"
 - Height to aerator/spout outlet 10-3/8"
 - Individual flanges 2-3/8" x 2-3/8"
 - Spout hole diameter 1-3/8"
 - Single-lever mixer hole diameter 1-3/8"
 - 2 x pressure hose with 3/8" compression fitting
 - Water flow rate limited to max. 1.5 gpm
 - lead-free
 - This product can help a building meet the requirements of Green Building Rating Systems, e.g. LEED®, BREEAM®, DGNB
- (ADA)
- Flexible positioning of components.

	Brushed Champagne (22kt Gold)	32 815 861-46 0010
	Chrome	32 815 861-00 0010
	Brushed Platinum	32 815 861-06 0010
	Platinum	32 815 861-08 0010
	Durabrand (23kt Gold)	32 815 861-09 0010
	Dark Chrome	32 815 861-19 0010
	Brushed Durabrand (23kt Gold)	32 815 861-28 0010
	Matte Black	32 815 861-33 0010
	Brushed Bronze	32 815 861-42 0010
	Champagne (22kt Gold)	32 815 861-47 0010
	Brushed Chrome	32 815 861-93 0010
	Brushed Dark Platinum	32 815 861-99 0010

Recommended article

Soap dispenser with flange -
Brushed Champagne (22kt Gold)

82 444 970-46



Recommended article

AIR SWITCH operating button,
trim parts only - Brushed
Champagne (22kt Gold)

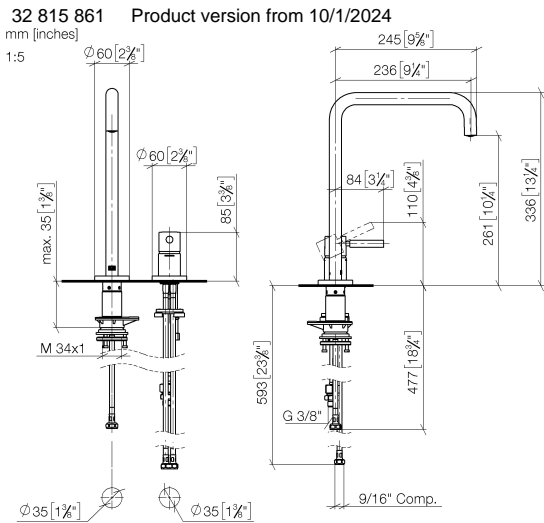
10 713 970-46





META SQUARE Two-hole mixer with individual flanges - Brushed Champagne
(22kt Gold)

META SQUARE

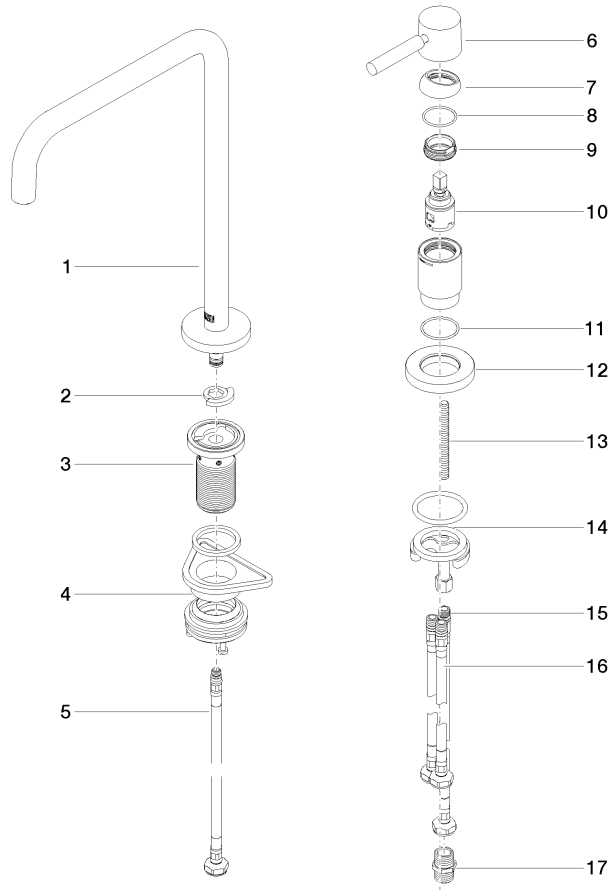


Codes & Standards

ADA	ASME A112.18.1	California Energy Commission (CEC)	cUPC
NSF372	NSF61		

Certificates and sustainability

IAPMO_6397 IAPMO_N-4976 IAPMO_4976 (



Spare parts list

Number	Item Number	Designation	Number of units	Lead time
5	04 30 04 100 00 90	hose	1.00	2
6	90 20 66 003 00-46	handle	1.00	30
11	09 14 10 110 90	seal	1.00	2
2	12 820 970 90	Swivel limiter set -	1.00	2
10	90 15 05 042 00 90	cartridge	1.00	2
15	04 30 04 104 00 90	hose	1.00	2
12	09 27 97 040-46	rosette	1.00	60
7	09 28 30 026-46	cover	1.00	60
4	04 23 10 044 08 90	fixing set	1.00	2
14	04 30 11 085 97 90	fixing set	1.00	2
8	09 14 10 091 90	seal	1.00	2
16	04 30 04 107 00 90	hose	2.00	2
1	90 28 22 288 00-46	spout	1.00	30
13	09 31 11 011 90	pin	1.00	2
17	90 24 03 250 00 90	nipple	1.00	2
3	90 30 01 299 00 90	shaft	1.00	2
9	09 24 04 266 90	nut	1.00	2