

32 815 875    Product version from 10/1/2024



- 9-1/2" Projection
  - Swiveling spout 360°
  - Optional restricted swivel available with swivel limiter set 12 820 970 90
  - Aerated stream
  - Total height 14-5/8"
  - Height to aerator/spout outlet 8-7/8"
  - Individual flanges 2-3/8" x 2-3/8"
  - Spout hole diameter 1-3/8"
  - Single-lever mixer hole diameter 1-3/8"
  - 2 x pressure hose with 3/8" compression fitting
  - Water flow rate limited to max. 1.5 gpm
  - lead-free
  - This product can help a building meet the requirements of Green Building Rating Systems, e.g. LEED®, BREEAM®, DGNB
- (ADA)
- Flexible positioning of components.

|   |                                |                    |
|---|--------------------------------|--------------------|
|    | Platinum                       | 32 815 875-08 0010 |
|    | Chrome                         | 32 815 875-00 0010 |
|    | Brushed Platinum               | 32 815 875-06 0010 |
|    | Durabronze (23kt Gold)         | 32 815 875-09 0010 |
|    | Dark Chrome                    | 32 815 875-19 0010 |
|    | Brushed Durabronze (23kt Gold) | 32 815 875-28 0010 |
|    | Matte Black                    | 32 815 875-33 0010 |
|    | Brushed Bronze                 | 32 815 875-42 0010 |
|    | Brushed Champagne (22kt Gold)  | 32 815 875-46 0010 |
|   | Champagne (22kt Gold)          | 32 815 875-47 0010 |
|  | Brushed Chrome                 | 32 815 875-93 0010 |
|  | Brushed Dark Platinum          | 32 815 875-99 0010 |

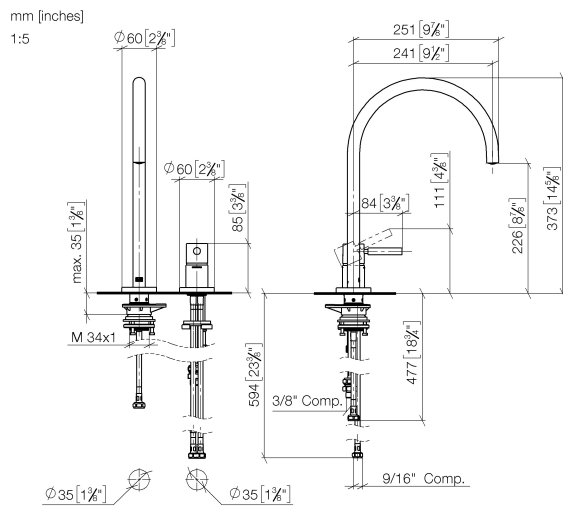
Recommended article

|   |                             |               |
|---|-----------------------------|---------------|
|  | <b>Swivel limiter set -</b> | 12 820 970 90 |
|---|-----------------------------|---------------|

Recommended article

|   |  |               |
|---|--|---------------|
|  | <b>AIR SWITCH operating button, trim parts only - Platinum</b> | 10 713 970-08 |
|---|--|---------------|

32 815 875 Product version from 10/1/2024

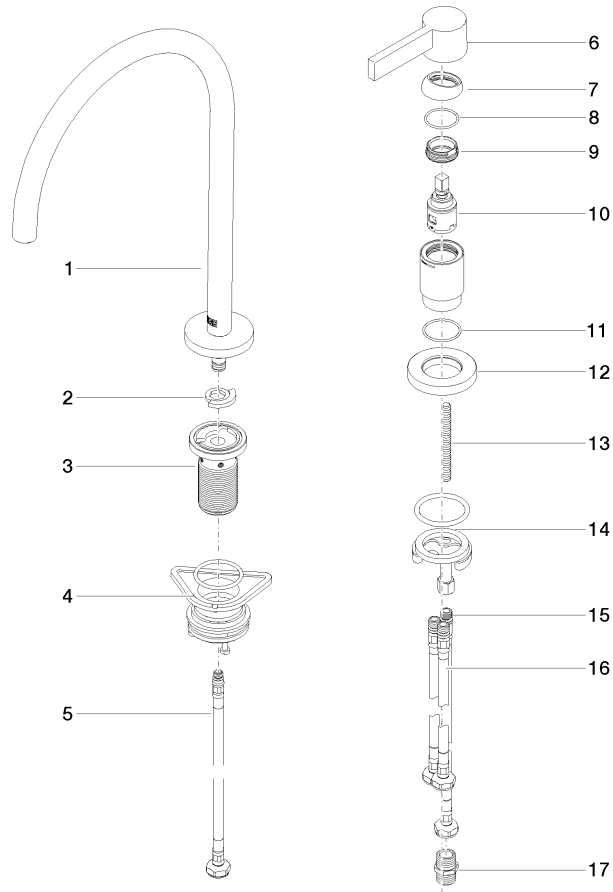


### Codes & Standards

|        |                |                                    |      |
|--------|----------------|------------------------------------|------|
| ADA    | ASME A112.18.1 | California Energy Commission (CEC) | cUPC |
| NSF372 | NSF61          |                                    |      |

### Certificates and sustainability

IAPMO\_6397      IAPMO\_N-4976      IAPMO\_4976 (



## Spare parts list

| Number | Item Number        | Designation          | Number of units | Lead time |
|--------|--------------------|----------------------|-----------------|-----------|
| 15     | 04 30 04 104 00 90 | hose                 | 1.00            | 2         |
| 13     | 09 31 11 011 90    | pin                  | 1.00            | 2         |
| 1      | 90 28 22 291 00-08 | spout                | 1.00            | 40        |
| 8      | 09 14 10 091 90    | seal                 | 1.00            | 2         |
| 17     | 90 24 03 250 00 90 | nipple               | 1.00            | 2         |
| 16     | 04 30 04 105 00 90 | hose                 | 2.00            | 2         |
| 9      | 09 24 04 266 90    | nut                  | 1.00            | 2         |
| 4      | 04 23 10 044 08 90 | fixing set           | 1.00            | 2         |
| 2      | 12 820 970 90      | Swivel limiter set - | 1.00            | 2         |
| 5      | 04 30 04 100 00 90 | hose                 | 1.00            | 2         |
| 10     | 90 15 05 042 00 90 | cartridge            | 1.00            | 2         |
| 7      | 09 28 30 026-08    | cover                | 1.00            | 40        |
| 6      | 90 20 87 003 00-08 | handle               | 1.00            | 40        |
| 3      | 90 30 01 299 00 90 | shaft                | 1.00            | 2         |
| 12     | 09 27 97 040-08    | rosette              | 1.00            | 40        |
| 14     | 04 30 11 085 97 90 | fixing set           | 1.00            | 2         |
| 11     | 09 14 10 110 90    | seal                 | 1.00            | 2         |