

32 815 875 Product version from 10/1/2024



- 9-1/2" Projection
  - Swiveling spout 360°
  - Optional restricted swivel available with swivel limiter set 12 820 970 90
  - Aerated stream
  - Total height 14-5/8"
  - Height to aerator/spout outlet 8-7/8"
  - Individual flanges 2-3/8" x 2-3/8"
  - Spout hole diameter 1-3/8"
  - Single-lever mixer hole diameter 1-3/8"
  - 2 x pressure hose with 3/8" compression fitting
  - Water flow rate limited to max. 1.5 gpm
  - lead-free
  - This product can help a building meet the requirements of Green Building Rating Systems, e.g. LEED®, BREEAM®, DGNB (ADA)
- Flexible positioning of components.

	Matte Black	32 815 875-33 0010
	Chrome	32 815 875-00 0010
	Brushed Platinum	32 815 875-06 0010
	Platinum	32 815 875-08 0010
	Durabrass (23kt Gold)	32 815 875-09 0010
	Dark Chrome	32 815 875-19 0010
	Brushed Durabrass (23kt Gold)	32 815 875-28 0010
	Brushed Bronze	32 815 875-42 0010
	Brushed Champagne (22kt Gold)	32 815 875-46 0010
	Champagne (22kt Gold)	32 815 875-47 0010
	Brushed Chrome	32 815 875-93 0010
	Brushed Dark Platinum	32 815 875-99 0010

Recommended article

	<b>Swivel limiter set -</b>	12 820 970 90
---	-----------------------------	---------------

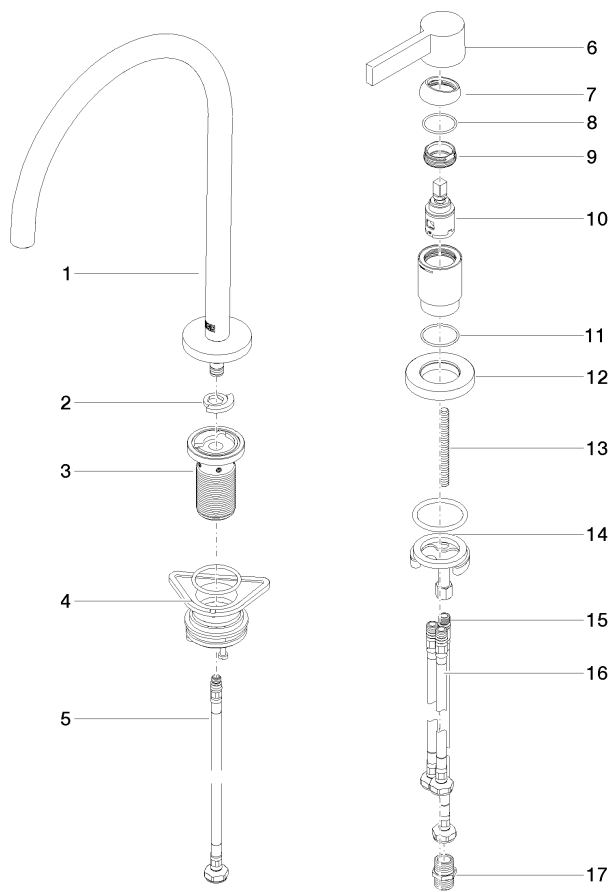
Recommended article

	<b>AIR SWITCH operating button, trim parts only - Matte Black</b>	10 713 970-33
---	---	---------------

Recommended article

	<b>Soap dispenser with flange - Matte Black</b>	82 444 970-33
---	---	---------------





## Spare parts list

Number	Item Number	Designation	Number of units	Lead time
11	09 14 10 110 90	seal	1.00	2
16	04 30 04 105 00 90	hose	2.00	2
7	09 28 30 026-33	cover	1.00	60
3	90 30 01 299 00 90	shaft	1.00	2
12	09 27 97 040-33	rosette	1.00	60
14	04 30 11 085 97 90	fixing set	1.00	2
9	09 24 04 266 90	nut	1.00	2
17	90 24 03 250 00 90	nipple	1.00	2
1	90 28 22 291 00-33	spout	1.00	30
2	12 820 970 90	Swivel limiter set -	1.00	2
6	90 20 87 003 00-33	handle	1.00	30
4	04 23 10 044 08 90	fixing set	1.00	2
8	09 14 10 091 90	seal	1.00	2
10	90 15 05 042 00 90	cartridge	1.00	2
5	04 30 04 100 00 90	hose	1.00	2
15	04 30 04 104 00 90	hose	1.00	2
13	09 31 11 011 90	pin	1.00	2