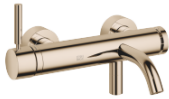


META Single-lever tub mixer for wall-mounted installation without hand shower set - Champagne (22kt Gold)

33 200 660 Product version from 7/1/2023



- 8" Projection
- Round aerator
- Integrated diverter
- 3/8" Shower outlet
- Flanges Ø 2-3/8"
- 1/2" connection
- Center to center 5-7/8" ± 5/8"
- Water flow rate limited to max. 3.7 gpm

(ADA)

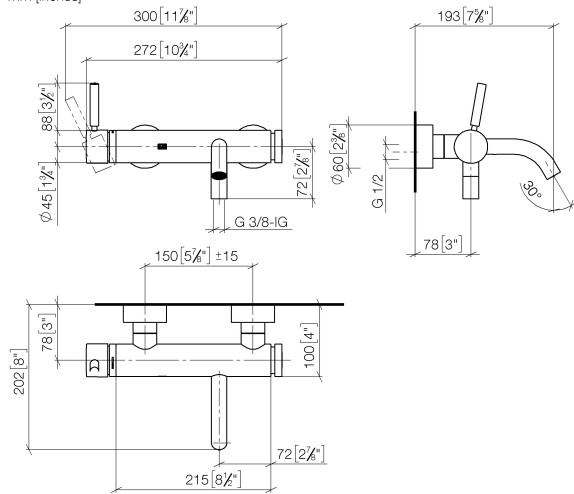
Internal backflow preventer.

NOTE: Local building codes may require the use of an anti-scald device. Please refer to remote pressure balance valve (35 914 970 90)

| | | |
|---|-------------------------------|---------------|
|  | Champagne (22kt Gold) | 33 200 660-47 |
|  | Chrome | 33 200 660-00 |
|  | Brushed Platinum | 33 200 660-06 |
|  | Dark Chrome | 33 200 660-19 |
|  | Light gold | 33 200 660-26 |
|  | Brushed Light Gold | 33 200 660-27 |
|  | Matte Black | 33 200 660-33 |
|  | Brushed Bronze | 33 200 660-42 |
|  | Brushed Champagne (22kt Gold) | 33 200 660-46 |
|  | Brushed Chrome | 33 200 660-93 |
|  | Brushed Dark Platinum | 33 200 660-99 |

META Single-lever tub mixer for wall-mounted installation without hand shower set - Champagne (22kt Gold)

33 200 660 Product version from 7/1/2023
mm [inches]



Flow rate chart



Codes & Standards

| | | | |
|------------------------------------|-----------|----------|------------------------|
| California Energy Commission (CEC) | DIN 4109 | ISO 3822 | Scottish Water Byelaws |
| UK Water Supply Regulations | Ü-Zeichen | | |



**META Single-lever tub mixer for wall-mounted installation without hand shower
set - Champagne (22kt Gold)**

33 200 660 Product version from 7/1/2023

Certificates

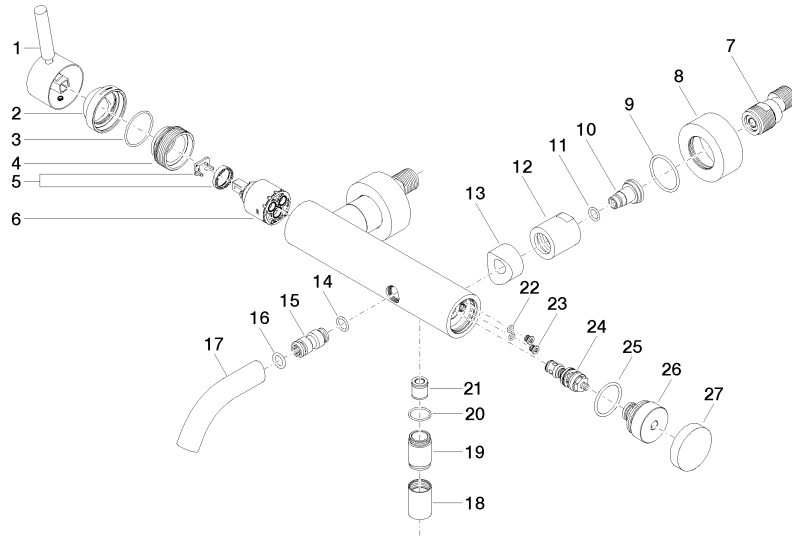
LGA_29

WRAS_2207

META Single-lever tub mixer for wall-mounted installation without hand shower set - Champagne (22kt Gold)

33 200 660 Product version from 7/1/2023

Parts for other
finishes can be found
here: [Chrome](#)





META Single-lever tub mixer for wall-mounted installation without hand shower set - Champagne (22kt Gold)

33 200 660 Product version from 7/1/2023

Spare parts list

| Number | Item Number | Designation | Number of units | Lead time |
|--------|--------------------|---------------------|-----------------|-----------|
| 1 | 90 20 66 007 00-47 | handle | 1 | 30 |
| 2 | 09 28 30 032-47 | cover | 1 | 60 |
| 3 | 09 14 10 102 90 | seal | 1 | 2 |
| 4 | 09 24 04 296 90 | nut | 1 | 2 |
| 5 | 90 28 10 148 00 90 | accessories | 1 | 2 |
| 6 | 90 15 05 064 00 90 | cartridge | 1 | 2 |
| 7 | 04 11 04 030 00 90 | connection | 2 | 2 |
| 8 | 09 27 62 004-47 | rosette | 2 | 30 |
| 9 | 09 14 10 119 90 | seal | 2 | 2 |
| 10 | 09 29 05 005 20 90 | nipple | 2 | 60 |
| 11 | 09 14 10 008 90 | seal | 2 | 2 |
| 12 | 09 23 10 048-47 | nut | 2 | 60 |
| 13 | 09 18 40 059-47 | sleeve | 2 | 60 |
| 14 | 09 14 10 003 90 | seal | 1 | 2 |
| 15 | 09 24 04 043 90 | nipple | 1 | 2 |
| 16 | 90 14 10 011 00 90 | seal | 1 | 2 |
| 17 | 90 11 06 213 00-47 | spout | 1 | 30 |
| 18 | 90 21 02 069 00-47 | cover | 1 | 30 |
| 19 | 09 24 03 115 20-47 | nipple | 1 | 30 |
| 20 | 90 14 10 032 00 90 | seal | 1 | 2 |
| 21 | 90 23 01 141 00 90 | back-flow preventer | 1 | 2 |
| 22 | 09 14 10 001 90 | seal | 2 | 2 |
| 23 | 09 30 30 113 20 90 | screw | 2 | 2 |
| 24 | 90 31 09 032 00-47 | diverter | 1 | 30 |
| 25 | 09 14 10 101 90 | seal | 1 | 2 |
| 26 | 09 21 10 035 20-47 | nipple | 1 | 60 |
| 27 | 09 20 62 031-47 | handle | 1 | 60 |