



IMO Single-lever tub mixer for wall-mounted installation without hand shower set - Chrome

IMO

33 200 671    Product version from 4/1/2024







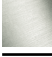

- 7-1/2" Projection
- Round aerator
- Integrated diverter
- 3/8" Shower outlet
- Flanges Ø 2-3/8"
- 1/2" connection
- Center to center 5-7/8" ± 5/8"
- Water flow rate limited to max. 4.4 gpm

Internal backflow preventer.

(ADA)

NOTE: Local building codes may require the use of an anti-scald device. Please refer to remote pressure balance valve (35 914 970 90)

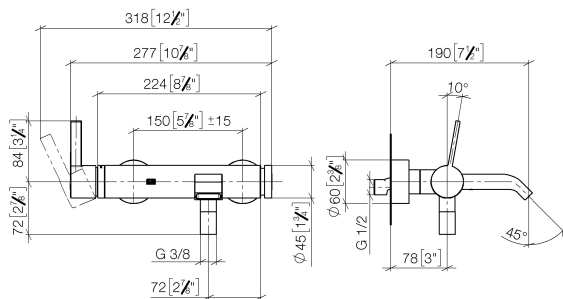
NOTE: Hand shower sold separately. For more hand shower options, please see the miscellaneous articles section of each series.

	Chrome	33 200 671-00 0010
	Brushed Platinum	33 200 671-06 0010
	Dark Chrome	33 200 671-19 0010
	Matte Black	33 200 671-33 0010
	Brushed Chrome	33 200 671-93 0010
	Brushed Dark Platinum	33 200 671-99 0010

IMO Single-lever tub mixer for wall-mounted installation without hand shower set - Chrome

IMO

33 200 671 Product version from 4/1/2024  
mm [inches]



## Flow rate chart



## Codes & Standards

ADA

ASME A112.18.1

cUPC



## IMO Single-lever tub mixer for wall-mounted installation without hand shower set - Chrome

IMO

---

33 200 671 Product version from 4/1/2024

Certificates and sustainability

---

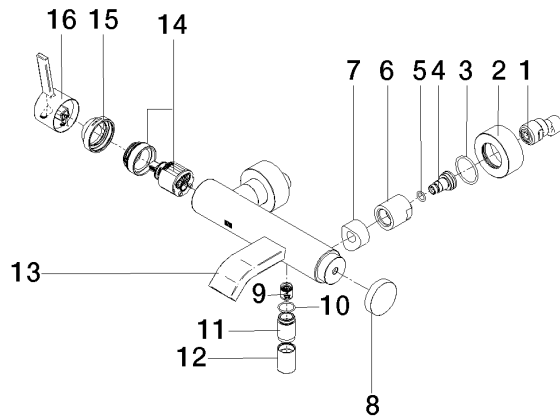
IAPMO\_4976 (

## IMO Single-lever tub mixer for wall-mounted installation without hand shower set - Chrome

IMO

33 200 671 Product version from 4/1/2024

Parts for other  
finishes can be found  
here: Brushed  
Platinum



### Spare parts list

Number	Item Number	Designation	Number of units	Lead time
15	09 28 30 032-00	cover	1.00	10
6	09 23 10 048-00	nut	2.00	10
2	09 27 62 004-00	rosette	2.00	10
3	09 14 10 119 90	seal	2.00	2
5	09 14 10 008 90	seal	2.00	2
10	90 14 10 032 00 90	seal	1.00	2
9	90 23 01 141 00 90	back-flow preventer	1.00	2
8	09 20 62 031-00	handle	1.00	10
11	09 24 03 115 20-00	nipple	1.00	10
16	90 20 67 020 00-00	handle	1.00	10
1	04 11 04 030 00 90	connection	1.00	2
12	90 21 02 069 00-00	cover	1.00	10
4	09 29 05 005 20 90	nipple	2.00	60
14	90 15 05 046 01 90	cartridge	1.00	2
7	09 18 40 059-00	sleeve	2.00	10
13	90 11 06 228 00-00	spout	1.00	10