



LISSE Single-lever tub mixer for wall-mounted installation without hand shower set - Brushed Chrome








33 200 845 Product version from 4/1/2024



- 7-1/2"-7-7/8" Projection
- Round aerator
- Integrated diverter
- 3/8" Shower outlet
- Flanges Ø 2-3/8"
- 1/2" connection
- Center to center 5-7/8" ± 5/8"
- Water flow rate limited to max. 3.6 gpm

Internal backflow preventer.

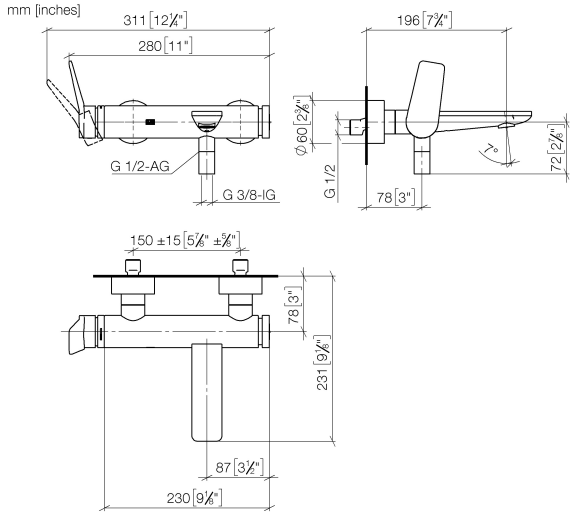
NOTE: Local building codes may require the use of an anti-scald device. Please refer to remote pressure balance valve (35 914 970 90)

	Brushed Chrome	33 200 845-93
	Chrome	33 200 845-00
	Brushed Platinum	33 200 845-06
	Dark Chrome	33 200 845-19
	Brushed Light Gold	33 200 845-27
	Matte Black	33 200 845-33
	Brushed Dark Platinum	33 200 845-99

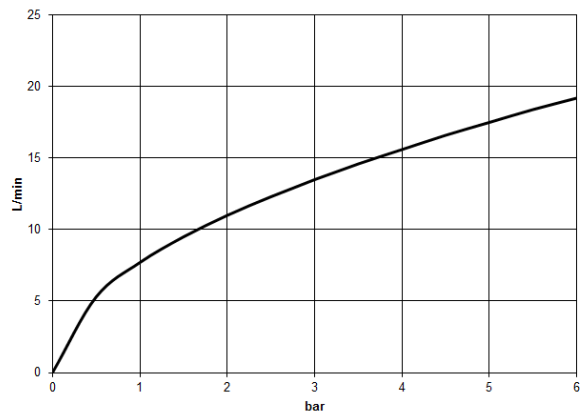


LISSE Single-lever tub mixer for wall-mounted installation without hand shower set - Brushed Chrome

33 200 845 Product version from 4/1/2024



Flow rate chart



Codes & Standards

ASME A112.18.1	California Energy Commission (CEC)	cUPC	DIN 4109
ISO 3822	Scottish Water Byelaws	UK Water Supply Regulations	Ü-Zeichen



LISSE Single-lever tub mixer for wall-mounted installation without hand shower
set - Brushed Chrome

33 200 845 Product version from 4/1/2024

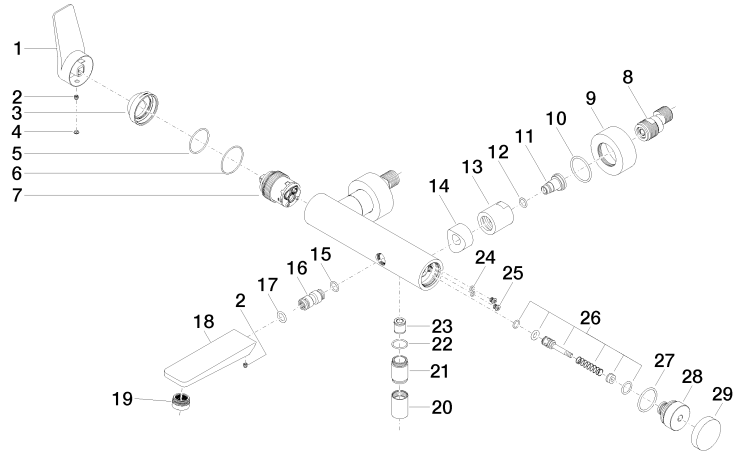
Certificates

LGA_9	WRAS_2311	IAPMO_4976 (
-------	-----------	--------------

LISSE Single-lever tub mixer for wall-mounted installation without hand shower set - Brushed Chrome

33 200 845 Product version from 4/1/2024

Parts for other
finishes can be found
here: [Chrome](#)





LISSE Single-lever tub mixer for wall-mounted installation without hand shower set - Brushed Chrome

33 200 845 Product version from 4/1/2024

Spare parts list

Number	Item Number	Designation	Number of units	Lead time
1	09 20 84 021-93	handle	1	20
2	90 31 11 030 00 90	pin	1	2
3	09 28 30 032-93	cover	1	20
4	90 31 20 087 00-93	plug	1	20
5	09 14 10 102 90	seal	1	2
6	09 14 10 190 90	seal	1	2
7	90 15 05 046 01 90	cartridge	1	2
8	04 11 04 030 00 90	connection	2	2
9	09 27 62 004-93	rosette	2	20
10	09 14 10 119 90	seal	2	2
11	09 29 05 005 20-93	nipple	2	20
12	09 14 10 008 90	seal	2	2
13	09 23 10 048-93	nut	2	20
14	09 18 40 059-93	sleeve	2	20
15	09 14 10 003 90	seal	1	2
16	09 24 04 043 90	nipple	1	2
17	90 14 10 011 00 90	seal	1	2
18	09 11 84 012-93	spout	1	20
19	90 23 01 161 00-93	aerator	1	20
20	90 21 02 069 00-93	cover	1	-
Spare part can no longer be ordered, please order the replacement item				
21	09 24 03 115 20-93	nipple	1	20
22	90 14 10 032 00 90	seal	1	2
23	90 23 01 141 00 90	back-flow preventer	1	2
24	09 14 10 001 90	seal	1	2
25	09 30 30 113 20 90	screw	1	2
26	90 31 09 032 00-93	diverter	1	20
27	09 14 10 101 90	seal	1	2
28	09 21 10 035 20-93	nipple	1	20
29	09 20 62 031-93	handle	1	20