

## META Single-lever lavatory mixer with drain - Brushed Bronze

META

33 500 661 Product version from 1/23/2020 to 4/1/2025



- 6-5/8" Projection
- US drain with overflow
- Swiveling spout 360°
- Round aerated stream
- Total height 12-1/4"
- Height to aerator/spout outlet 8-7/8"
- 1-3/8" hole diameter
- 2 x pressure hose with 3/8" compression fitting
- Water flow rate limited to max. 1.2 gpm
- lead-free
- This product can help a building meet the requirements of Green Building Rating Systems, e.g. LEED®, BREEAM®, DGNB

(ADA)

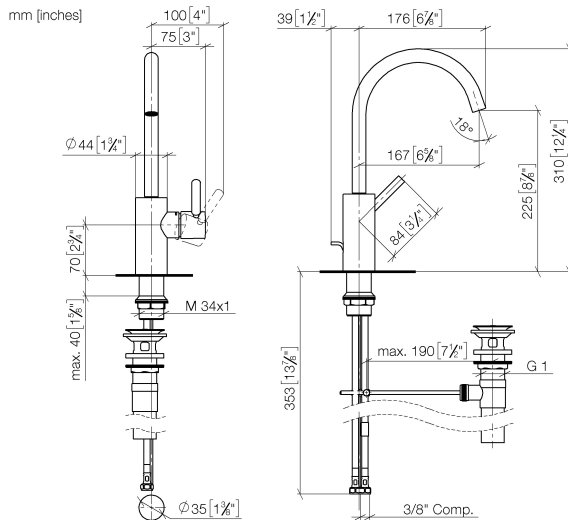
Suitable only for basins with overflow.

	Brushed Bronze	33 500 661-42 0010
	Chrome	33 500 661-00 0010
	Brushed Platinum	33 500 661-06 0010
	Dark Chrome	33 500 661-19 0010
	Light gold	33 500 661-26 0010
	Brushed Light Gold	33 500 661-27 0010
	Matte Black	33 500 661-33 0010
	Brushed Dark Brass	33 500 661-39 0010
	Brushed Champagne (22kt Gold)	33 500 661-46 0010
	Champagne (22kt Gold)	33 500 661-47 0010
	Brushed Chrome	33 500 661-93 0010
	Brushed Dark Platinum	33 500 661-99 0010

## META Single-lever lavatory mixer with drain - Brushed Bronze

META

33 500 661 Product version from 1/23/2020 to 4/1/2025



### Codes & Standards

ADA	ASME A112.18.1	California Energy Commission (CEC)	cUPC
EPA WaterSense	NSF372	NSF61	WaterSense



### Certificates and sustainability

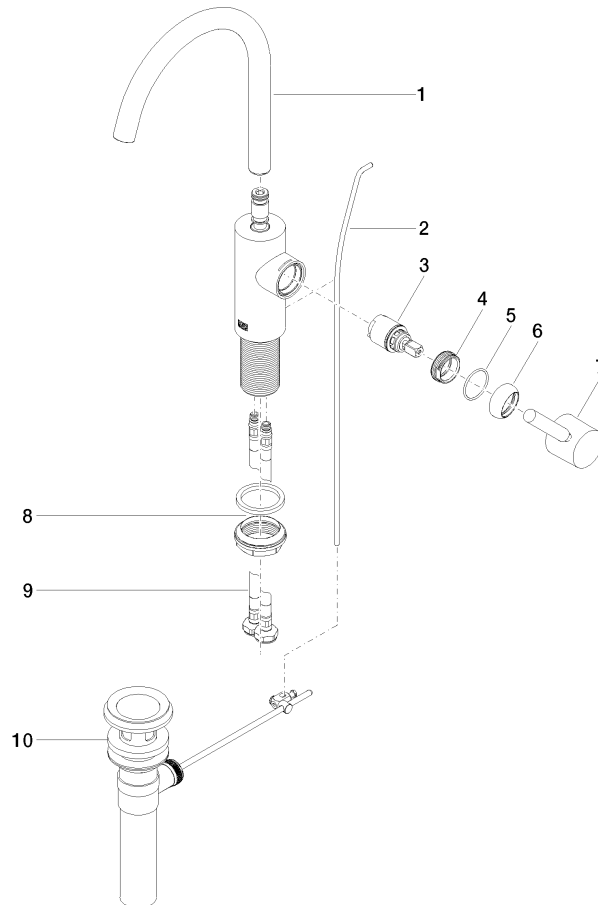
IAPMO_N-4	IAPMO_6	IAPMO_8834	IAPMO_4976 (
-----------	---------	------------	--------------

## META Single-lever lavatory mixer with drain - Brushed Bronze

META

33 500 661 Product version from 1/23/2020 to 4/1/2025

Parts for other  
finishes can be found  
here: [Chrome](#)



### Spare parts list

Number	Item Number	Designation	Number of units	Lead time
8	04 23 10 044 07 90	fixing set	1.00	2
9	04 30 04 102 00 90	Flexible supply line 3/8" -	2.00	2
2	09 31 09 110-42	pull-rod	1.00	60
7	90 20 66 003 00-42	handle	1.00	30
10	90 11 01 023 00-42	pop-up waste	1.00	30
1	90 28 22 320 01-42	spout	1.00	30
6	09 28 30 021-42	cover	1.00	60
3	90 15 05 044 00 90	cartridge	1.00	2
4	09 24 04 266 90	nut	1.00	2
5	09 14 10 091 90	seal	1.00	2