

TARA Single-lever lavatory mixer with drain - Platinum

TARA

33 500 882 Product version from 4/1/2024



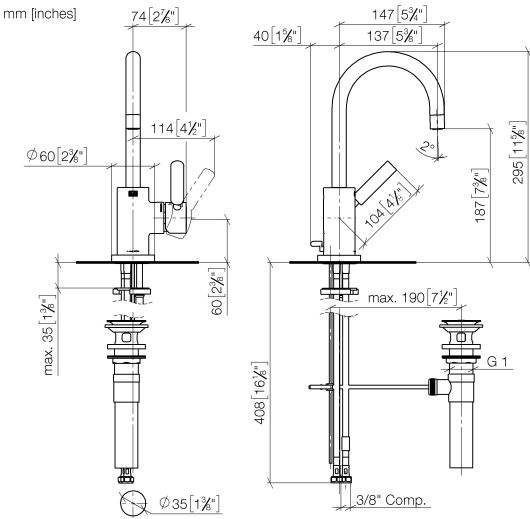
- 5-3/8" Projection
- Swiveling spout 360°
- Round aerated stream
- Total height 11-5/8"
- Height to aerator/spout outlet 7-3/8"
- 1-3/8" hole diameter
- 2x 3/8" flexible supply lines
- Water flow rate limited to max. 1.2 gpm
- lead-free
- This product can help a building meet the requirements of Green Building Rating Systems, e.g. LEED®, BREEAM®, DGNB

Suitable only for basins with overflow.

(ADA)

	Platinum	33 500 882-08 0010
	Chrome	33 500 882-00 0010
	Brushed Platinum	33 500 882-06 0010
	Dark Chrome	33 500 882-19 0010
	Brushed Durabronze (23kt Gold)	33 500 882-28 0010
	Matte Black	33 500 882-33 0010
	Brushed Dark Brass	33 500 882-39 0010
	Brushed Bronze	33 500 882-42 0010
	Brushed Champagne (22kt Gold)	33 500 882-46 0010
	Champagne (22kt Gold)	33 500 882-47 0010
	Brushed Chrome	33 500 882-93 0010
	Brushed Dark Platinum	33 500 882-99 0010

33 500 882 Product version from 4/1/2024



Codes & Standards

ADA	ASME A112.18.1	California Energy Commission (CEC)	cUPC
EPA WaterSense	NSF372	NSF61	WaterSense

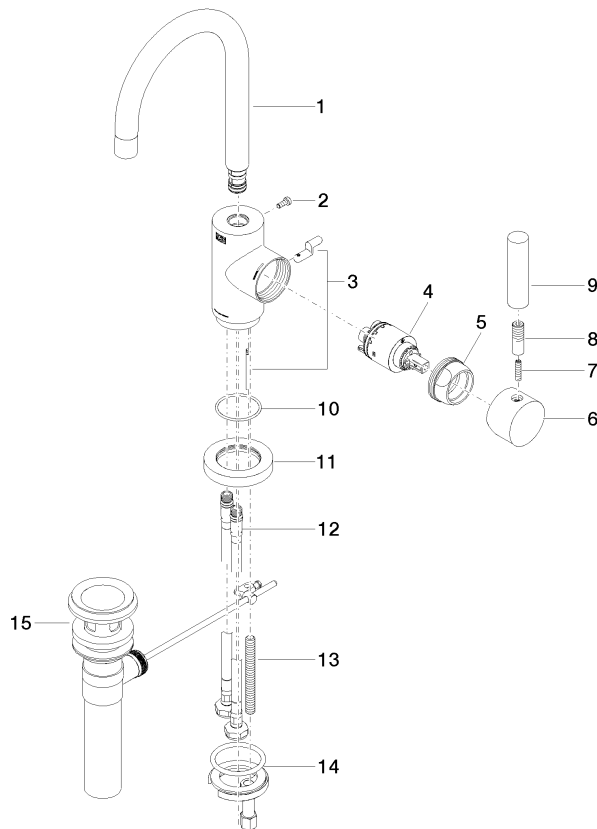


Certificates and sustainability

IAPMO_N-4976	IAPMO_6397	IAPMO_8834	IAPMO_4976 (
--------------	------------	------------	--------------

33 500 882 Product version from 4/1/2024

Parts for other
finishes can be found
here: [Chrome](#)



Spare parts list

Number	Item Number	Designation	Number of units	Lead time
	13 09 31 11 011 90	pin	1.00	2
	10 09 14 10 034 90	seal	1.00	2
	11 09 28 10 055-08	rosette	1.00	40
	1 90 28 22 371 01-08	spout	1.00	40
	6 90 20 88 040 00-08	handle	1.00	40
	2 09 30 30 054 90	screw	1.00	2
	5 09 24 04 107-08	nut	1.00	40
	3 04 20 16 031 80-08	pull-rod	1.00	60
	7 09 31 11 010 90	pin	1.00	2
	12 04 30 04 106 00 90	hose	2.00	2
	14 04 30 11 038 00 90	fixing set	1.00	2
	4 90 15 05 065 00 90	cartridge	1.00	2
	9 11 170 880-08	handle	1.00	40
	8 90 24 04 048 00-08	nipple	1.00	40
	15 90 11 01 023 00-08	pop-up waste	1.00	40