



VAIA Single-lever lavatory mixer with drain - Chrome

VAIA

33 505 809 Product version from 4/1/2025



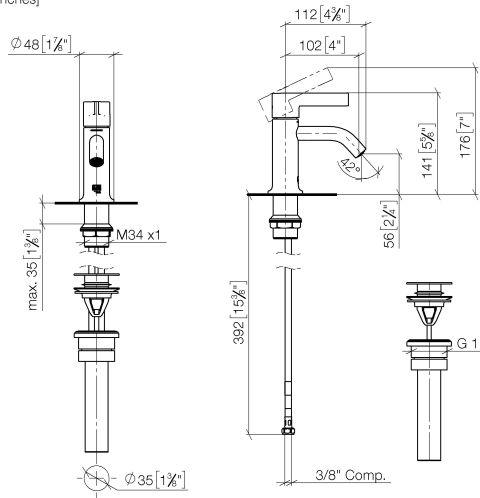
- 4-1/8" Projection
- Rigid spout
- Round aerated stream
- Total height 5-1/2"
- Height to aerator/spout outlet 2-1/4"
- 1-3/8" hole diameter
- 2 x pressure hose with 3/8" compression fitting
- Water flow rate limited to max. 1.2 gpm
- lead-free
- This product can help a building meet the requirements of Green Building Rating Systems, e.g. LEED®, BREEAM®, DGNB

Suitable only for basins with overflow.
(ADA)

	Chrome	33 505 809-00 0010
	Brushed Platinum	33 505 809-06 0010
	Platinum	33 505 809-08 0010
	Brushed Durabronze (23kt Gold)	33 505 809-28 0010
	Brushed Dark Brass	33 505 809-39 0010
	Brushed Bronze	33 505 809-42 0010
	Brushed Champagne (22kt Gold)	33 505 809-46 0010
	Champagne (22kt Gold)	33 505 809-47 0010
	Brushed Dark Platinum	33 505 809-99 0010

33 505 809 Product version from 4/1/2025

mm [inches]



Codes & Standards

ADA	ASME A112.18.1	California Energy Commission (CEC)	cUPC
EPA WaterSense	NSF372	NSF61	WaterSense



Certificates and sustainability

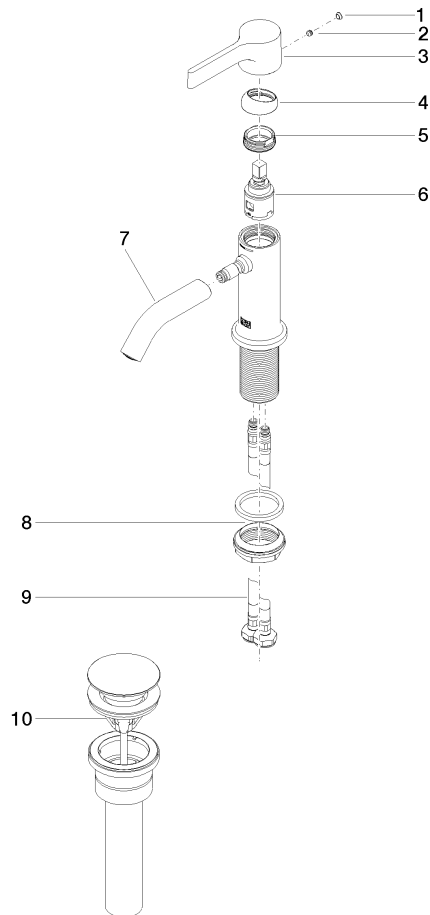
IAPMO_6397	IAPMO_N-4976	IAPMO_8834	IAPMO_4976 (
------------	--------------	------------	--------------

VAIA Single-lever lavatory mixer with drain - Chrome

VAIA

33 505 809 Product version from 4/1/2025

Parts for other
finishes can be found
here: Brushed
Platinum



Spare parts list

Number	Item Number	Designation	Number of units	Lead time
4	09 28 30 021-00	cover	1.00	10
5	09 24 04 266 90	nut	1.00	2
7	90 11 06 215 01-00	spout	1.00	10
9	04 30 04 102 00 90	Flexible supply line 3/8" -	2.00	2
3	09 20 80 020-00	handle	1.00	10
1	90 31 20 087 00-00	plug	1.00	10
10	10 125 970-00 0010	Umbrella drain 1 1/4" - Chrome	1.00	2
8	04 23 10 044 07 90	fixing set	1.00	2
6	90 15 05 042 00 90	cartridge	1.00	2
2	90 31 11 063 00 90	pin	1.00	2