



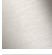




IMO Single-lever lavatory mixer without drain - Dark Chrome

IMO

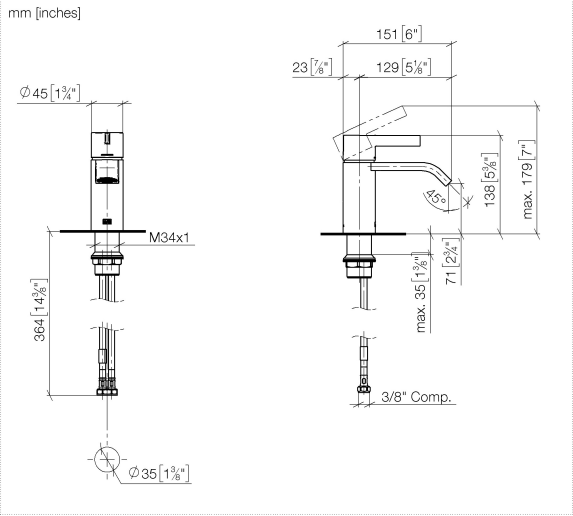
33 521 671 Product version from 4/1/2024




- 5-1/8" Projection
- Rigid spout
- Rectangular aerated stream
- Total height 5-3/8"
- Height to aerator/spout outlet 2-3/4"
- 1-3/8" hole diameter
- 2 x pressure hose with 3/8" compression fitting
- Water flow rate limited to max. 1.2 gpm
- lead-free
- This product can help a building meet the requirements of Green Building Rating Systems, e.g. LEED®, BREEAM®, DGNB

| | | |
|---|-----------------------|--------------------|
|  | Dark Chrome | 33 521 671-19 0010 |
|  | Chrome | 33 521 671-00 0010 |
|  | Brushed Platinum | 33 521 671-06 0010 |
|  | Brushed Light Gold | 33 521 671-27 0010 |
|  | Matte Black | 33 521 671-33 0010 |
|  | Brushed Chrome | 33 521 671-93 0010 |
|  | Brushed Dark Platinum | 33 521 671-99 0010 |

33 521 671 Product version from 4/1/2024



Codes & Standards

| | | | |
|----------------|------------|---|--------|
| ASME A112.18.1 | cUPC | EPA WaterSense | NSF372 |
| NSF61 | WaterSense |  | |

Certificates and sustainability

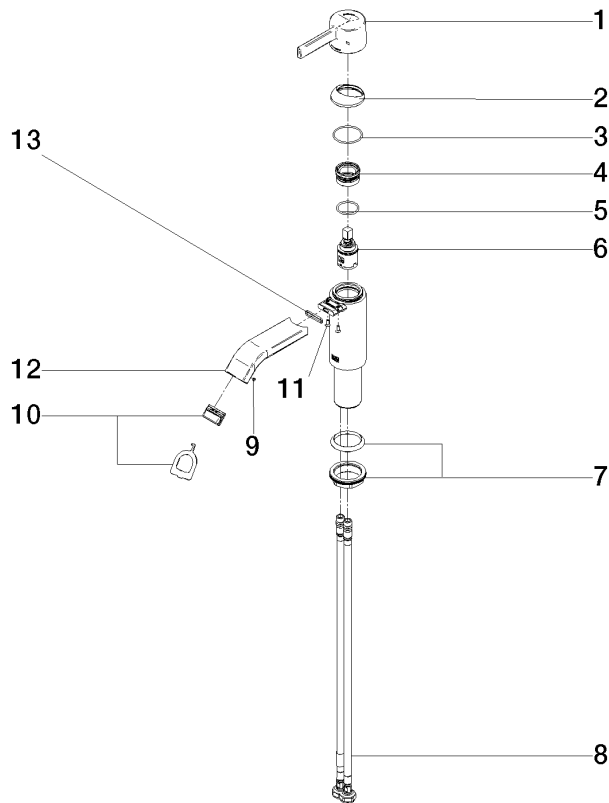
| | | | |
|--------------|------------|------------|--------------|
| IAPMO_N-4976 | IAPMO_6397 | IAPMO_8834 | IAPMO_4976 (|
|--------------|------------|------------|--------------|

IMO Single-lever lavatory mixer without drain - Dark Chrome

IMO

33 521 671 Product version from 4/1/2024

Parts for other finishes can be found here: [Chrome](#)



Spare parts list

| Number | Item Number | Designation | Number of units | Lead time |
|--|--------------------|-------------|-----------------|-----------|
| 2 | 90 28 30 059 00-19 | cover | 1.00 | - |
| Spare part can no longer be ordered, please order the replacement item | | | | |
| 1 | 90 20 67 019 00-19 | handle | 1.00 | 20 |
| 13 | 09 14 10 017 90 | seal | 1.00 | 2 |
| 5 | 09 14 10 112 90 | seal | 1.00 | 2 |
| 10 | 90 29 03 134 00 90 | aerator | 1.00 | 2 |
| 7 | 04 23 10 044 07 90 | fixing set | 1.00 | 2 |
| 4 | 90 23 10 146 00 90 | nut | 1.00 | 2 |
| 8 | 04 30 04 106 00 90 | hose | 2.00 | 2 |
| 3 | 09 14 10 102 90 | seal | 1.00 | 2 |
| 11 | 09 30 30 166 90 | screw | 2.00 | 2 |
| 6 | 90 15 05 042 00 90 | cartridge | 1.00 | 2 |
| 9 | 09 31 11 006 90 | pin | 1.00 | 2 |
| 12 | 90 28 22 440 00-19 | spout | 1.00 | 20 |