

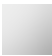







CL.1 Single-lever lavatory mixer without drain - Chrome

33 521 705 Product version from 5/10/2021



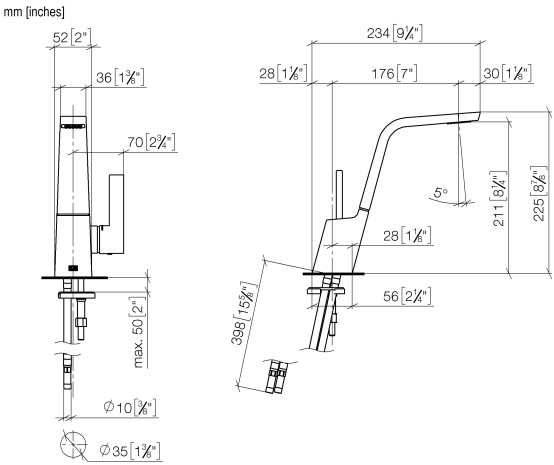
- 6-3/4" Projection
 - Rigid spout
 - Rectangular aerator with 40 individual streams
 - Total height 8-7/8"
 - 2-1/4" x 2" base dimension
 - Height to aerator/spout outlet 8-3/8"
 - 1-3/8" hole diameter
 - 2 x pressure hose with 3/8" compression fitting
 - Water flow rate limited to max. 1.1 gpm
 - lead-free
 - This product can help a building meet the requirements of Green Building Rating Systems, e.g. LEED®, BREEAM®, DGNB
- (ADA)

| | | |
|---|-------------------------------|--------------------|
|  | Chrome | 33 521 705-00 0010 |
|  | Brushed Platinum | 33 521 705-06 0010 |
|  | Dark Chrome | 33 521 705-19 0010 |
|  | Brushed Champagne (22kt Gold) | 33 521 705-46 0010 |
|  | Champagne (22kt Gold) | 33 521 705-47 0010 |
|  | Brushed Dark Platinum | 33 521 705-99 0010 |

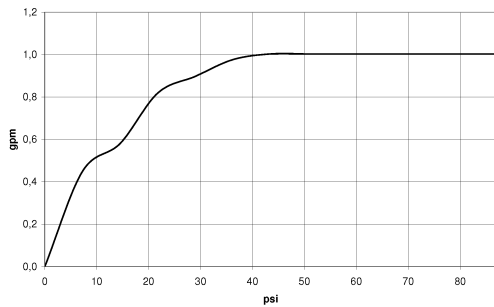


CL.1 Single-lever lavatory mixer without drain - Chrome

33 521 705 Product version from 5/10/2021



Flow rate chart



Codes & Standards

| | | | |
|--------|----------------|---------------------------|------------------------------------|
| ADA | ASME A112.18.1 | ASME A112.18.1/CSA B125.1 | California Energy Commission (CEC) |
| cUPC | EPA WaterSense | NSF/ANSI 372 | NSF/ANSI/CAN 61 |
| NSF372 | NSF61 | Water Sense | WaterSense |





CL.1 Single-lever lavatory mixer without drain - Chrome

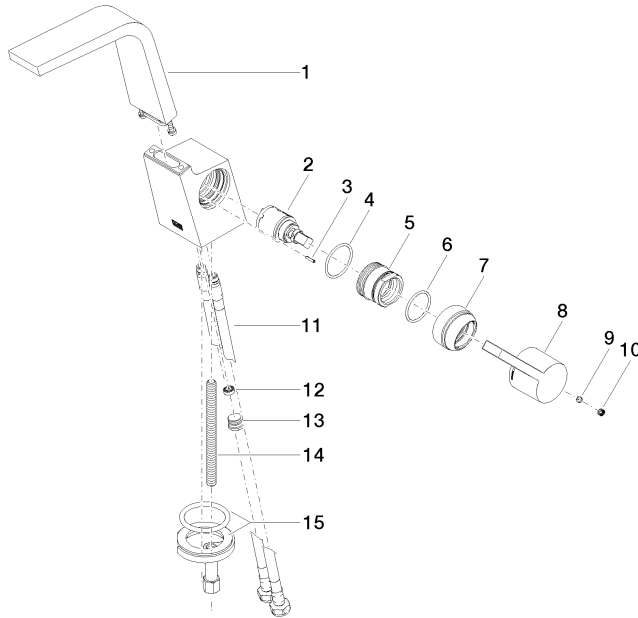
33 521 705 Product version from 5/10/2021

Certificates

IAPMO_N-4976 IAPMO_6397 IAPMO_8834 IAPMO_4976 (

CL.1 Single-lever lavatory mixer without drain - Chrome

33 521 705 Product version from 5/10/2021



Spare parts list

| Number | Item Number | Designation | Number of units | Lead time |
|--------|--------------------|-----------------------------|-----------------|-----------|
| 1 | 90 11 70 001 00-00 | spout | 1 | 10 |
| 2 | 90 15 05 042 00 90 | cartridge | 1 | 2 |
| 3 | 09 31 11 152 90 | pin | 1 | 2 |
| 4 | 09 14 10 137 90 | seal | 1 | 2 |
| 5 | 09 24 04 294 90 | sleeve | 1 | 2 |
| 6 | 90 14 10 063 00 90 | seal | 1 | 2 |
| 7 | 09 28 30 029-00 | cover | 1 | 10 |
| 8 | 09 20 67 010-00 | handle | 1 | 10 |
| 9 | 90 31 11 030 00 90 | pin | 1 | 2 |
| 10 | 90 31 20 109 00 90 | plug | 1 | 2 |
| 11 | 04 30 04 102 00 90 | Flexible supply line 3/8" - | 2 | 2 |
| 12 | 09 23 01 034 90 | flow reducer | 1 | 2 |
| 13 | 04 31 20 039 11 90 | plug | 1 | 2 |
| 14 | 09 31 11 012 90 | pin | 1 | 2 |
| 15 | 04 30 11 038 75 90 | fixing set | 1 | 2 |