









CL.1 Single-lever lavatory mixer without drain - Brushed Platinum

33 521 705 Product version from 5/10/2021

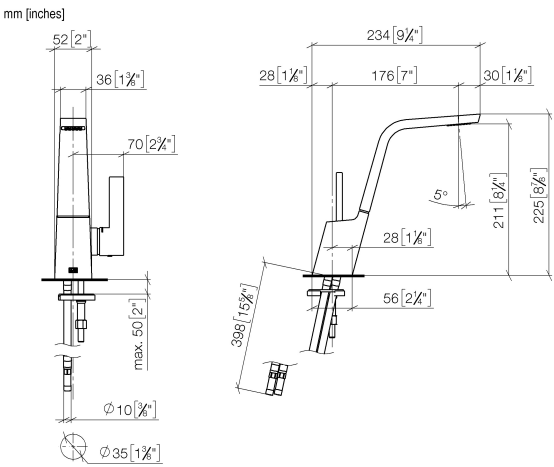


- 6-3/4" Projection
 - Rigid spout
 - Rectangular aerator with 40 individual streams
 - Total height 8-7/8"
 - 2-1/4" x 2" base dimension
 - Height to aerator/spout outlet 8-3/8"
 - 1-3/8" hole diameter
 - 2 x pressure hose with 3/8" compression fitting
 - Water flow rate limited to max. 1.1 gpm
 - lead-free
 - This product can help a building meet the requirements of Green Building Rating Systems, e.g. LEED®, BREEAM®, DGNB
- (ADA)

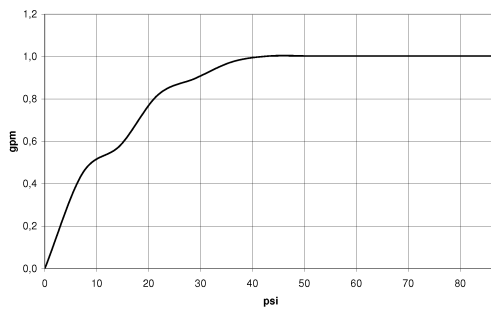
	Brushed Platinum	33 521 705-06 0010
	Chrome	33 521 705-00 0010
	Dark Chrome	33 521 705-19 0010
	Brushed Champagne (22kt Gold)	33 521 705-46 0010
	Champagne (22kt Gold)	33 521 705-47 0010
	Brushed Dark Platinum	33 521 705-99 0010

CL.1 Single-lever lavatory mixer without drain - Brushed Platinum

33 521 705 Product version from 5/10/2021



Flow rate chart



Codes & Standards

ADA	ASME A112.18.1	ASME A112.18.1/CSA B125.1	California Energy Commission (CEC)
cUPC	EPA WaterSense	NSF/ANSI 372	NSF/ANSI/CAN 61
NSF372	NSF61	Water Sense	WaterSense





CL.1 Single-lever lavatory mixer without drain - Brushed Platinum

33 521 705 Product version from 5/10/2021

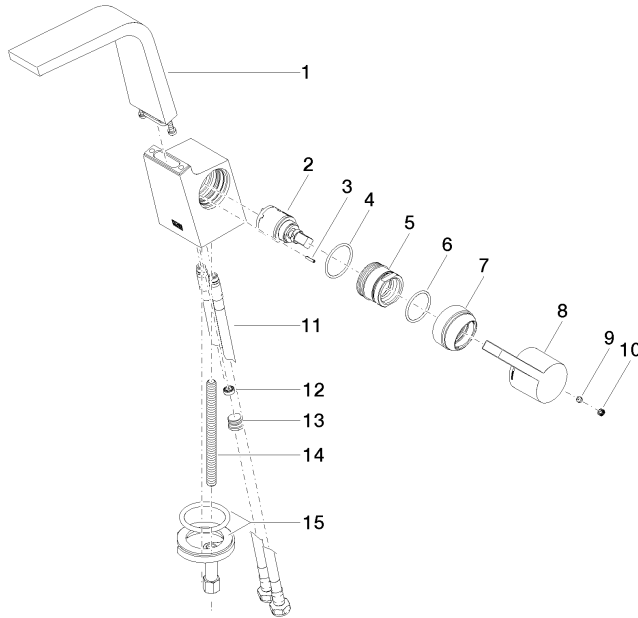
Certificates

IAPMO_N-4976 IAPMO_6397 IAPMO_8834 IAPMO_4976 (

CL.1 Single-lever lavatory mixer without drain - Brushed Platinum

33 521 705 Product version from 5/10/2021

Parts for other
finishes can be found
here: [Chrome](#)



Spare parts list

Number	Item Number	Designation	Number of units	Lead time
1	90 11 70 001 00-06	spout	1	10
2	90 15 05 042 00 90	cartridge	1	2
3	09 31 11 152 90	pin	1	2
4	09 14 10 137 90	seal	1	2
5	09 24 04 294 90	sleeve	1	2
6	90 14 10 063 00 90	seal	1	2
7	09 28 30 029-06	cover	1	10
8	09 20 67 010-06	handle	1	10
9	90 31 11 030 00 90	pin	1	2
10	90 31 20 109 00 90	plug	1	2
11	04 30 04 102 00 90	Flexible supply line 3/8" -	2	2
12	09 23 01 034 90	flow reducer	1	2
13	04 31 20 039 11 90	plug	1	2
14	09 31 11 012 90	pin	1	2
15	04 30 11 038 75 90	fixing set	1	2