





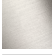



CL.1 Single-lever lavatory mixer without drain - Dark Chrome

CL.1

33 521 705 Product version from 5/10/2021



- 6-3/4" Projection
 - Rigid spout
 - Rectangular aerator with 40 individual streams
 - Total height 8-7/8"
 - 2-1/4" x 2" base dimension
 - Height to aerator/spout outlet 8-3/8"
 - 1-3/8" hole diameter
 - 2 x pressure hose with 3/8" compression fitting
 - Water flow rate limited to max. 1.1 gpm
 - lead-free
 - This product can help a building meet the requirements of Green Building Rating Systems, e.g. LEED®, BREEAM®, DGNB
- (ADA)

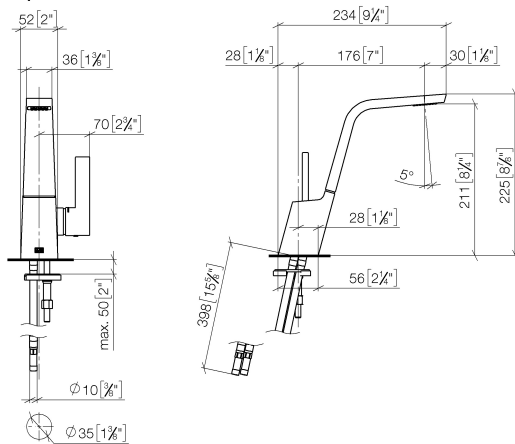
	Dark Chrome	33 521 705-19 0010
	Chrome	33 521 705-00 0010
	Brushed Platinum	33 521 705-06 0010
	Brushed Champagne (22kt Gold)	33 521 705-46 0010
	Champagne (22kt Gold)	33 521 705-47 0010
	Brushed Dark Platinum	33 521 705-99 0010

CL.1 Single-lever lavatory mixer without drain - Dark Chrome

CL.1

33 521 705 Product version from 5/10/2021

mm [inches]



Codes & Standards

ADA	ASME A112.18.1	California Energy Commission (CEC)	cUPC
EPA WaterSense	NSF372	NSF61	WaterSense



Certificates and sustainability

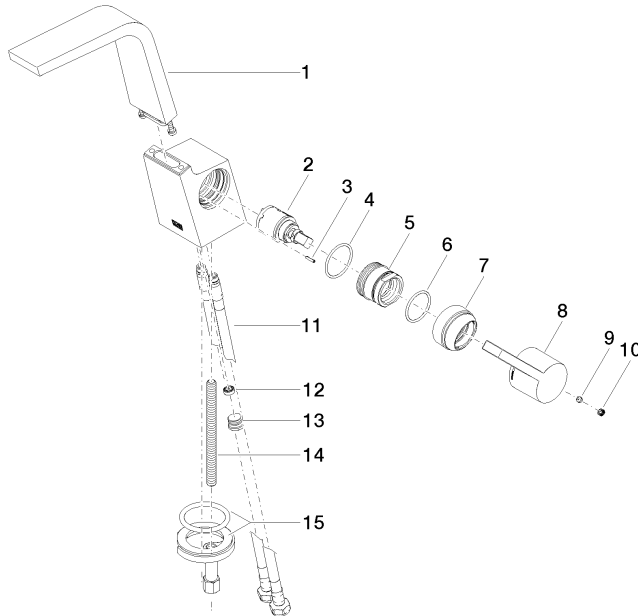
IAPMO_N-4976 IAPMO_6397 IAPMO_8834 IAPMO_4976 (

CL.1 Single-lever lavatory mixer without drain - Dark Chrome

CL.1

33 521 705 Product version from 5/10/2021

Parts for other
finishes can be found
here: [Chrome](#)



Spare parts list

Number	Item Number	Designation	Number of units	Lead time
2	90 15 05 042 00 90	cartridge	1.00	2
10	90 31 20 109 00 90	plug	1.00	2
9	90 31 11 030 00 90	pin	1.00	2
11	04 30 04 102 00 90	Flexible supply line 3/8" -	2.00	2
14	09 31 11 012 90	pin	1.00	2
4	09 14 10 137 90	seal	1.00	2
1	90 11 70 001 00-19	spout	1.00	20
6	90 14 10 063 00 90	seal	1.00	2
5	09 24 04 294 90	sleeve	1.00	2
12	09 23 01 034 90	flow reducer	1.00	2
3	09 31 11 152 90	pin	1.00	2
15	04 30 11 038 75 90	fixing set	1.00	2
8	09 20 67 010-19	handle	1.00	60
7	09 28 30 029-19	cover	1.00	60
13	04 31 20 039 11 90	plug	1.00	2