



CL.1 Single-lever lavatory mixer without drain - Champagne (22kt Gold)

CL.1

33 521 705 Product version from 5/10/2021



- 6-3/4" Projection
  - Rigid spout
  - Rectangular aerator with 40 individual streams
  - Total height 8-7/8"
  - 2-1/4" x 2" base dimension
  - Height to aerator/spout outlet 8-3/8"
  - 1-3/8" hole diameter
  - 2 x pressure hose with 3/8" compression fitting
  - Water flow rate limited to max. 1.1 gpm
  - lead-free
  - This product can help a building meet the requirements of Green Building Rating Systems, e.g. LEED®, BREEAM®, DGNB
- (ADA)

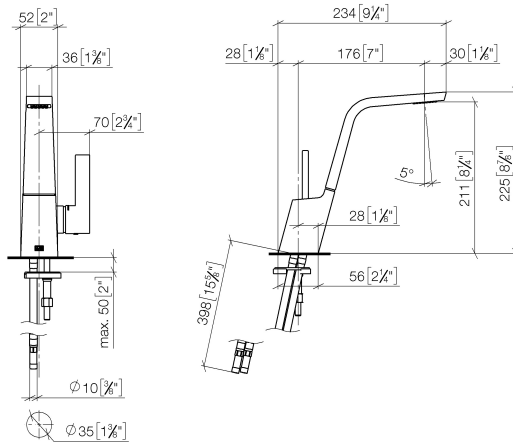
|   |                               |                    |
|---|-------------------------------|--------------------|
|  | Champagne (22kt Gold)         | 33 521 705-47 0010 |
|  | Chrome                        | 33 521 705-00 0010 |
|  | Brushed Platinum              | 33 521 705-06 0010 |
|  | Dark Chrome                   | 33 521 705-19 0010 |
|  | Brushed Champagne (22kt Gold) | 33 521 705-46 0010 |
|  | Brushed Dark Platinum         | 33 521 705-99 0010 |

## CL.1 Single-lever lavatory mixer without drain - Champagne (22kt Gold)

CL.1

33 521 705 Product version from 5/10/2021

mm [inches]



### Codes & Standards

|                |                |                                    |            |
|----------------|----------------|------------------------------------|------------|
| ADA            | ASME A112.18.1 | California Energy Commission (CEC) | cUPC       |
| EPA WaterSense | NSF372         | NSF61                              | WaterSense |



### Certificates and sustainability

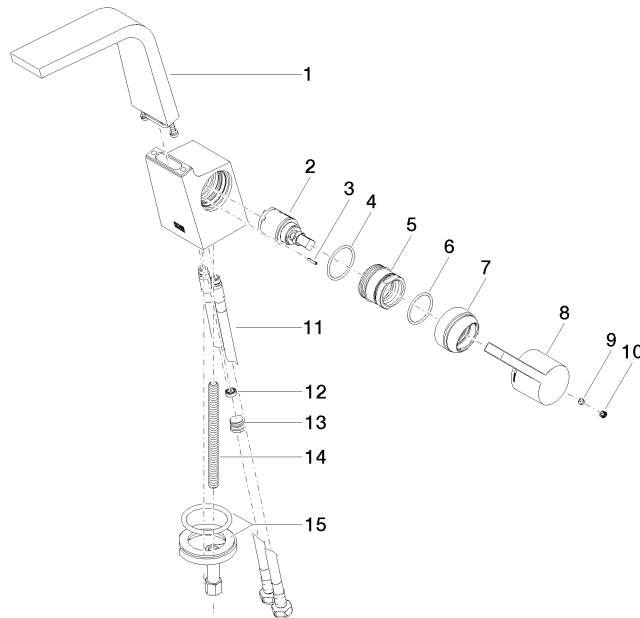
IAPMO\_N-4976    IAPMO\_6397    IAPMO\_8834    IAPMO\_4976 (

## CL.1 Single-lever lavatory mixer without drain - Champagne (22kt Gold)

CL.1

33 521 705 Product version from 5/10/2021

Parts for other  
finishes can be found  
here: [Chrome](#)



### Spare parts list

| Number | Item Number        | Designation                 | Number of units | Lead time |
|--------|--------------------|-----------------------------|-----------------|-----------|
| 2      | 90 15 05 042 00 90 | cartridge                   | 1.00            | 2         |
| 6      | 90 14 10 063 00 90 | seal                        | 1.00            | 2         |
| 7      | 09 28 30 029-47    | cover                       | 1.00            | 60        |
| 11     | 04 30 04 102 00 90 | Flexible supply line 3/8" - | 2.00            | 2         |
| 12     | 09 23 01 034 90    | flow reducer                | 1.00            | 2         |
| 1      | 90 11 70 001 00-47 | spout                       | 1.00            | 30        |
| 9      | 90 31 11 030 00 90 | pin                         | 1.00            | 2         |
| 3      | 09 31 11 152 90    | pin                         | 1.00            | 2         |
| 10     | 90 31 20 109 00 90 | plug                        | 1.00            | 2         |
| 8      | 09 20 67 010-47    | handle                      | 1.00            | 60        |
| 5      | 09 24 04 294 90    | sleeve                      | 1.00            | 2         |
| 4      | 09 14 10 137 90    | seal                        | 1.00            | 2         |
| 13     | 04 31 20 039 11 90 | plug                        | 1.00            | 2         |
| 15     | 04 30 11 038 75 90 | fixing set                  | 1.00            | 2         |
| 14     | 09 31 11 012 90    | pin                         | 1.00            | 2         |