



LULU Single-lever lavatory mixer without drain - Chrome

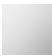

LULU

33 521 710 Product version from 3/31/2009 to 5/15/2020



- 6-1/8" Projection
- Rigid spout
- Round aerated stream
- Total height 4-1/2"
- Height to aerator/spout outlet 3-1/2"
- 1-3/8" hole diameter
- 2 x pressure hose with 3/8" compression fitting
- Water flow rate limited to max. 1.2 gpm
- lead-free
- This product can help a building meet the requirements of Green Building Rating Systems, e.g. LEED®, BREEAM®, DGNB

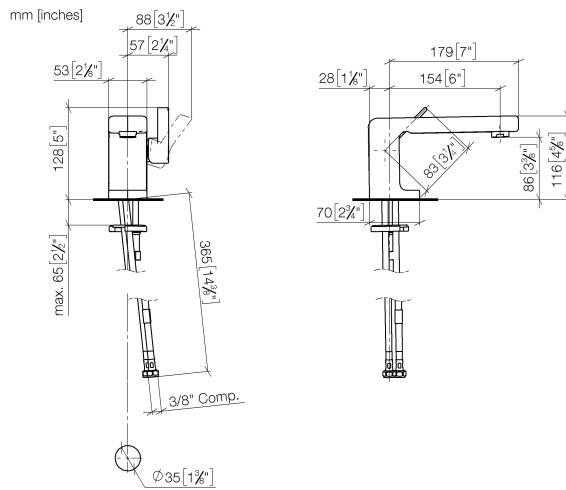
(ADA)

	Chrome	33 521 710-00 0010
	Brushed Platinum	33 521 710-06 0010

LULU Single-lever lavatory mixer without drain - Chrome

LULU

33 521 710 Product version from 3/31/2009 to 5/15/2020



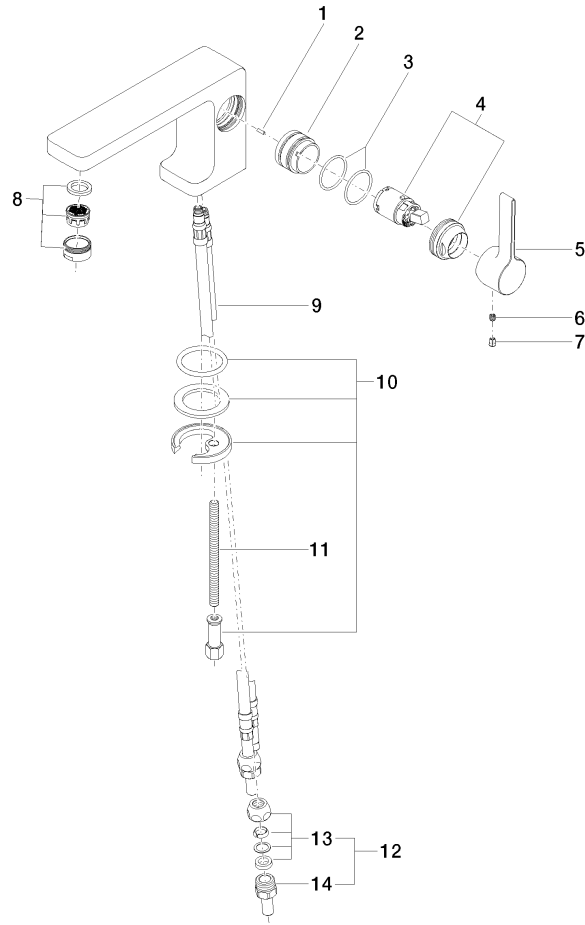
Codes & Standards

ADA	ASME A112.18.1	California Energy Commission (CEC)	cUPC
EPA WaterSense	NSF372	NSF61	WaterSense



Certificates and sustainability

IAPMO_N-4976 IAPMO_6397 IAPMO_8834 IAPMO_4976 (



Spare parts list

Number	Item Number	Designation	Number of units	Lead time
13	04 23 30 031 01-07	threaded connector	2.00	60
7	09 31 20 017 90	plug	1.00	2
9	04 30 04 018 00 90	hose	2.00	60
8	90 23 01 118 04-00	aerator	1.00	10
10	04 30 11 038 75 90	fixing set	1.00	2
2	09 18 40 095 10 90	sleeve	1.00	2
3	09 14 10 137 90	seal	2.00	2
12	04 24 04 222 00-00	adaptor	1.00	10
1	09 31 11 111 90	pin	1.00	2
4	90 15 05 041 00-00	cartridge	1.00	2
14	09 24 04 222 10-00	adaptor	2.00	10
11	09 31 11 012 90	pin	1.00	2
5	09 20 71 040-00	handle	1.00	10
6	90 31 11 030 00 90	pin	1.00	2