



CYO Single-lever lavatory mixer without drain - Brushed Durabrand (23kt Gold)

CYO

33 521 811



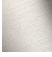

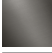


- 5-5/8" Projection
- Rigid spout
- Rectangular aerated stream
- Total height 7-1/8"
- Height to aerator/spout outlet 5"
- 1-3/8" hole diameter
- Water flow rate limited to max. 1.2 gpm
- 2 x pressure hose with 3/8" compression fitting
- lead-free
- This product can help a building meet the requirements of Green Building Rating Systems, e.g. LEED®, BREEAM®, DGNB

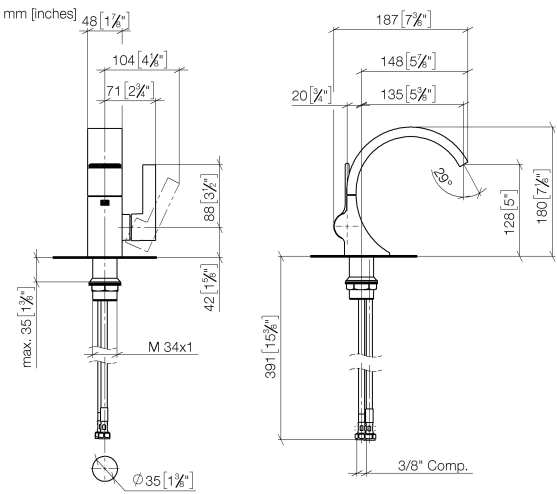
Suitable only for basins with overflow.

Distance from center of tap hole to wall min. 55 mm (2-11/64") or to front edge of basin min. 40 mm (1-37/64").

(ADA)

	Brushed Durabrand (23kt Gold)	33 521 811-28 0010
	Chrome	33 521 811-00 0010
	Brushed Platinum	33 521 811-06 0010
	Dark Chrome	33 521 811-19 0010
	Brushed Dark Platinum	33 521 811-99 0010

33 521 811



### Codes & Standards

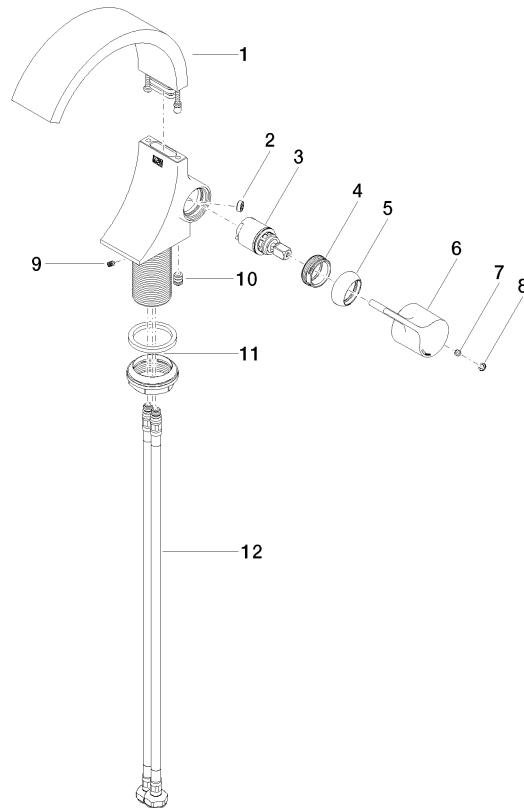
ADA	California Energy Commission (CEC)	NSF372	NSF61
-----	------------------------------------	--------	-------

### Certificates and sustainability

IAPMO\_N-4976      IAPMO\_6397

33 521 811

Parts for other  
finishes can be found  
here: [Chrome](#)



## Spare parts list

Number	Item Number	Designation	Number of units	Lead time
3	90 15 05 044 00 90	cartridge	1.00	2
1	90 11 70 012 01-28	spout	1.00	20
8	90 31 20 087 00-28	plug	1.00	20
6	09 20 80 024-28	handle	1.00	20
10	90 31 20 129 00 90	plug	1.00	2
5	09 28 30 021-28	cover	1.00	20
2	09 23 01 172 90	flow reducer	1.00	2
4	09 24 04 266 90	nut	1.00	2
12	04 30 04 102 00 90	Flexible supply line 3/8" -	2.00	2
9	09 31 11 008 90	pin	1.00	2
11	04 23 10 044 07 90	fixing set	1.00	2
7	90 31 11 030 00 90	pin	1.00	2