



LISSE Single-lever lavatory mixer without drain - Brushed Platinum








LISSE

33 521 845 Product version from 3/9/2016 to 10/31/2018



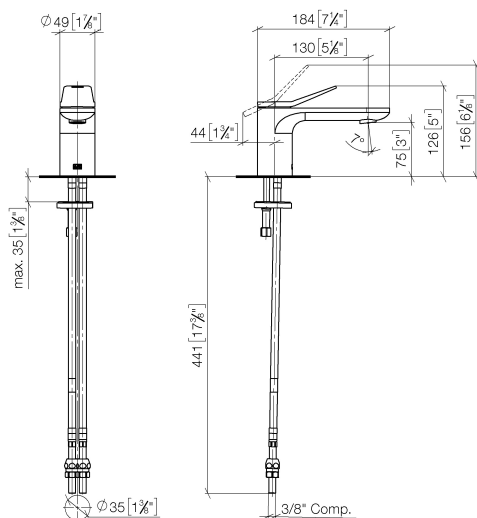
- 5-1/8" Projection
- Rigid spout
- Round aerated stream
- Total height 5"
- Height to aerator/spout outlet 3"
- 1-3/8" hole diameter
- 2 x pressure hose with 3/8" compression fitting
- Water flow rate limited to max. 1.2 gpm
- lead-free
- This product can help a building meet the requirements of Green Building Rating Systems, e.g. LEED®, BREEAM®, DGNB

(ADA)

	Brushed Platinum	33 521 845-06 0010
	Chrome	33 521 845-00 0010
	Dark Chrome	33 521 845-19 0010
	Brushed Light Gold	33 521 845-27 0010
	Matte Black	33 521 845-33 0010
	Brushed Chrome	33 521 845-93 0010
	Brushed Dark Platinum	33 521 845-99 0010

33 521 845 Product version from 3/9/2016 to 10/31/2018

mm [inches]



Codes & Standards

ADA	ASME A112.18.1	California Energy Commission (CEC)	cUPC
EPA WaterSense	NSF372	NSF61	WaterSense

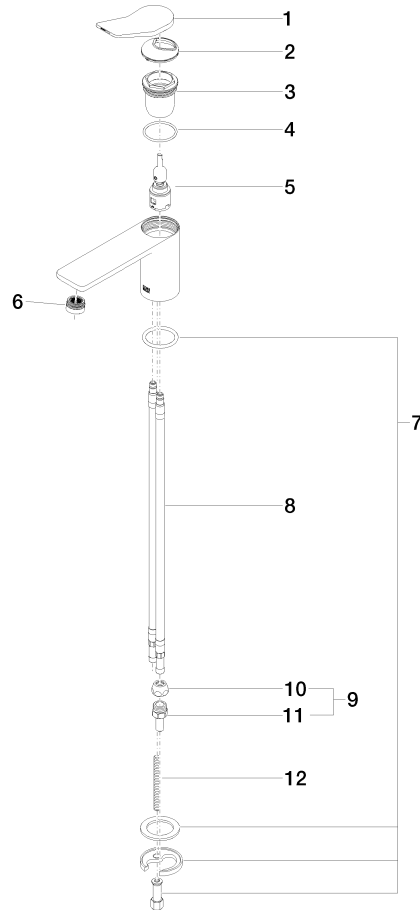


Certificates and sustainability

IAPMO_N-4976 IAPMO_6397 IAPMO_8834 IAPMO_4976 (

33 521 845 Product version from 3/9/2016 to 10/31/2018

Parts for other
finishes can be found
here: [Chrome](#)



Spare parts list

Number	Item Number	Designation	Number of units	Lead time
7	04 30 11 038 75 90	fixing set	1.00	2
9	04 24 04 222 00-06	adaptor	1.00	-
Spare part can no longer be ordered, please order the replacement item				
11	09 24 04 222 10-06	adaptor	2.00	-
Spare part can no longer be ordered, please order the replacement item				
4	09 14 10 038 90	seal	1.00	2
10	04 23 30 031 01-07	threaded connector	2.00	60
6	90 23 01 161 03-06	aerator	1.00	10
8	04 30 04 018 00 90	hose	2.00	60
1	90 20 84 020 00-06	handle	1.00	10
12	09 31 11 011 90	pin	1.00	2
2	09 28 30 034 90	cover	1.00	2
3	09 23 10 123 90	nut	1.00	2
5	90 15 05 042 01 90	cartridge	1.00	2