

META Single-lever lavatory mixer without drain - Brushed Bronze

META

33 525 660 Product version from 1/23/2020 to 4/1/2025



- 4-1/8" Projection
 - Rigid spout
 - Round aerated stream
 - Total height 5-3/8"
 - Height to aerator/spout outlet 2-1/4"
 - 1-3/8" hole diameter
 - Optional flange Ø 2" included
 - 2 x pressure hose with 3/8" compression fitting
 - Water flow rate limited to max. 1.2 gpm
 - lead-free
 - This product can help a building meet the requirements of Green Building Rating Systems, e.g. LEED®, BREEAM®, DGNB
- (ADA)

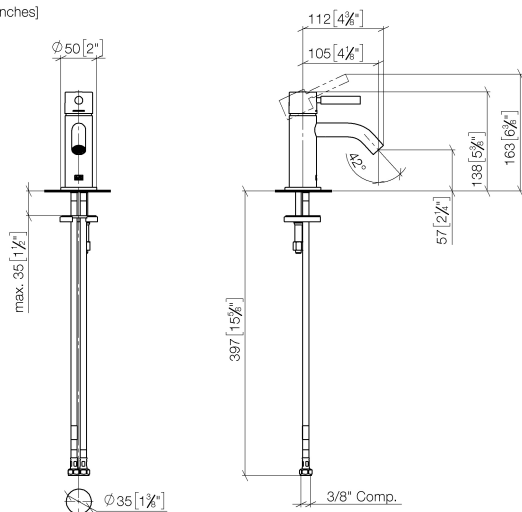
	Brushed Bronze	33 525 660-42 0010
	Chrome	33 525 660-00 0010
	Brushed Platinum	33 525 660-06 0010
	Platinum	33 525 660-08 0010
	Dark Chrome	33 525 660-19 0010
	Light gold	33 525 660-26 0010
	Brushed Light Gold	33 525 660-27 0010
	Red	33 525 660-29 0010
	Orange	33 525 660-30 0010
	Dark Green	33 525 660-31 0010
	Matte Black	33 525 660-33 0010
	Brushed Dark Brass	33 525 660-39 0010
	Brushed Champagne (22kt Gold)	33 525 660-46 0010
	Champagne (22kt Gold)	33 525 660-47 0010
	Brushed Chrome	33 525 660-93 0010
	Brushed Dark Platinum	33 525 660-99 0010

META Single-lever lavatory mixer without drain - Brushed Bronze

META

33 525 660 Product version from 1/23/2020 to 4/1/2025

mm [inches]



Codes & Standards

ADA	ASME A112.18.1	California Energy Commission (CEC)	cUPC
EPA WaterSense	NSF372	NSF61	WaterSense

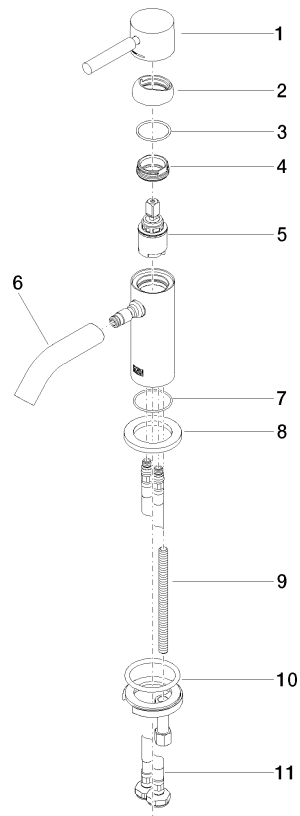


Certificates and sustainability

IAPMO_N-4976 IAPMO_6397 IAPMO_8834 IAPMO_4976 (

33 525 660 Product version from 1/23/2020 to 4/1/2025

Parts for other
finishes can be found
here: [Chrome](#)



Spare parts list

Number	Item Number	Designation	Number of units	Lead time
11	04 30 04 102 00 90	Flexible supply line 3/8" -	2.00	2
8	09 27 66 006-42	rosette	1.00	60
9	09 31 11 012 90	pin	1.00	2
2	09 28 30 043-42	cover	1.00	60
4	09 24 04 266 90	nut	1.00	2
7	09 14 10 202 90	seal	1.00	2
3	09 14 10 120 90	seal	1.00	2
5	90 15 05 044 00 90	cartridge	1.00	2
6	90 11 06 212 01-42	spout	1.00	30
10	04 30 11 038 00 90	fixing set	1.00	2
1	90 20 66 009 00-42	handle	1.00	30