

IMO Single-lever lavatory mixer without drain - Chrome








IMO

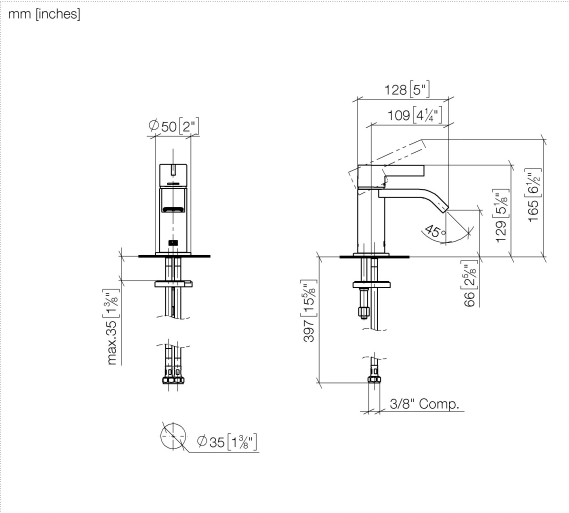
33 525 671

Product version from 4/1/2024




- 4-1/8" Projection
  - Rigid spout
  - Rectangular aerated stream
  - Total height 5-1/8"
  - Height to aerator/spout outlet 2-5/8"
  - 1-3/8" hole diameter
  - Optional flange Ø 2"included
  - 2 x pressure hose with 3/8" compression fitting
  - Water flow rate limited to max. 1.2 gpm
  - lead-free
  - This product can help a building meet the requirements of Green Building Rating Systems, e.g. LEED®, BREEAM®, DGNB
- (ADA)

	Chrome	33 525 671-00 0010
	Brushed Platinum	33 525 671-06 0010
	Dark Chrome	33 525 671-19 0010
	Brushed Light Gold	33 525 671-27 0010
	Matte Black	33 525 671-33 0010
	Brushed Chrome	33 525 671-93 0010
	Brushed Dark Platinum	33 525 671-99 0010

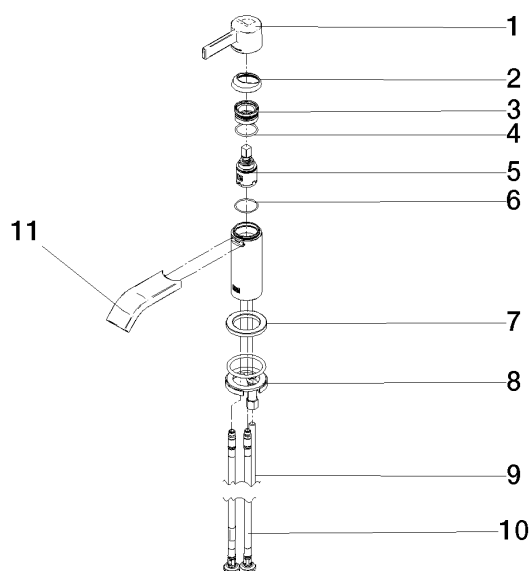


Codes & Standards

ADA	ASME A112.18.1	cUPC	EPA WaterSense
NSF372	NSF61	WaterSense	

Certificates and sustainability

IAPMO_N-4976	IAPMO_6397	IAPMO_8834	IAPMO_4976 (
--------------	------------	------------	--------------



## Spare parts list

Number	Item Number	Designation	Number of units	Lead time
2	90 28 30 060 00-00	cover	1.00	10
10	04 30 04 102 00 90	Flexible supply line 3/8" -	2.00	2
5	90 15 05 042 00 90	cartridge	1.00	2
8	04 30 11 038 00 90	fixing set	1.00	2
1	90 20 67 032 00-00	handle	1.00	-
Spare part can no longer be ordered, please order the replacement item				
11	90 28 22 402 00-00	spout	1.00	10
4	09 14 10 112 90	seal	1.00	2
7	09 27 66 006-00	rosette	1.00	10
9	09 31 11 012 90	pin	1.00	2
6	09 14 10 224 90	seal	1.00	2
3	90 23 10 146 00 90	nut	1.00	2