

IMO Single-lever lavatory mixer without drain - Dark Chrome



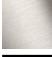




IMO

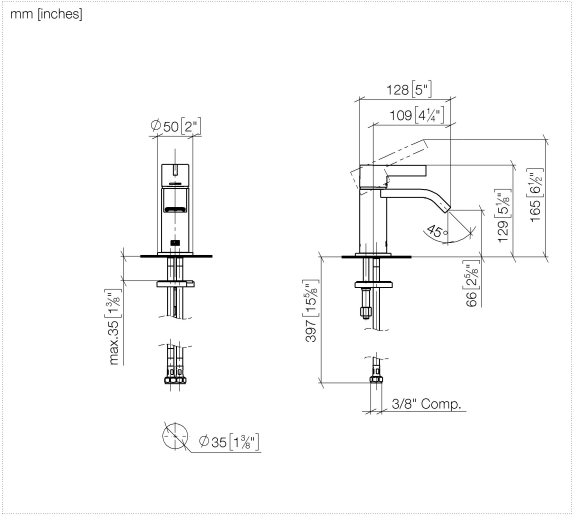
33 525 671

Product version from 4/1/2024



- 4-1/8" Projection
 - Rigid spout
 - Rectangular aerated stream
 - Total height 5-1/8"
 - Height to aerator/spout outlet 2-5/8"
 - 1-3/8" hole diameter
 - Optional flange Ø 2"included
 - 2 x pressure hose with 3/8" compression fitting
 - Water flow rate limited to max. 1.2 gpm
 - lead-free
 - This product can help a building meet the requirements of Green Building Rating Systems, e.g. LEED®, BREEAM®, DGNB
- (ADA)

	Dark Chrome	33 525 671-19 0010
	Chrome	33 525 671-00 0010
	Brushed Platinum	33 525 671-06 0010
	Brushed Light Gold	33 525 671-27 0010
	Matte Black	33 525 671-33 0010
	Brushed Chrome	33 525 671-93 0010
	Brushed Dark Platinum	33 525 671-99 0010



Codes & Standards

ADA ASME A112.18.1 cUPC EPA WaterSense

NSF372 NSF61 WaterSense



Certificates and sustainability

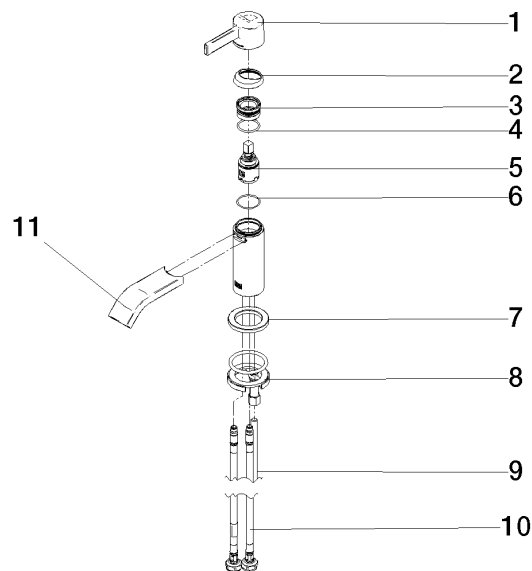
IAPMO_N-4976 IAPMO_6397 IAPMO_8834 IAPMO_4976 (

IMO Single-lever lavatory mixer without drain - Dark Chrome

IMO

33 525 671 Product version from 4/1/2024

Parts for other
finishes can be found
here: [Chrome](#)



Spare parts list

Number	Item Number	Designation	Number of units	Lead time
10	04 30 04 102 00 90	Flexible supply line 3/8" -	2.00	2
1	90 20 67 032 00-19	handle	1.00	-
Spare part can no longer be ordered, please order the replacement item				
6	09 14 10 224 90	seal	1.00	2
8	04 30 11 038 00 90	fixing set	1.00	2
2	90 28 30 060 00-19	cover	1.00	-
Spare part can no longer be ordered, please order the replacement item				
7	09 27 66 006-19	rosette	1.00	20
3	90 23 10 146 00 90	nut	1.00	2
11	90 28 22 402 00-19	spout	1.00	20
9	09 31 11 012 90	pin	1.00	2
5	90 15 05 042 00 90	cartridge	1.00	2
4	09 14 10 112 90	seal	1.00	2