



IMO Single-lever lavatory mixer with raised spout without drain - Matte Black



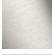




IMO

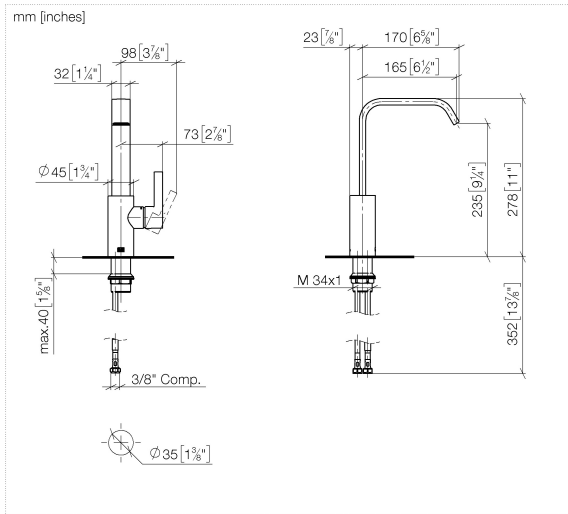
33 526 671    Product version from 4/1/2024



- 6-1/2" Projection
- Rigid spout
- Rectangular aerated stream
- Total height 11"
- Height to aerator/spout outlet 9-1/4"
- 1-3/8" hole diameter
- 2 x pressure hose with 3/8" compression fitting
- Water flow rate limited to max. 1.2 gpm
- lead-free
- This product can help a building meet the requirements of Green Building Rating Systems, e.g. LEED®, BREEAM®, DGNB

(ADA)

	Matte Black	33 526 671-33 0010
	Chrome	33 526 671-00 0010
	Brushed Platinum	33 526 671-06 0010
	Dark Chrome	33 526 671-19 0010
	Brushed Light Gold	33 526 671-27 0010
	Brushed Chrome	33 526 671-93 0010
	Brushed Dark Platinum	33 526 671-99 0010



## Codes & Standards

ADA ASME A112.18.1 cUPC EPA WaterSense

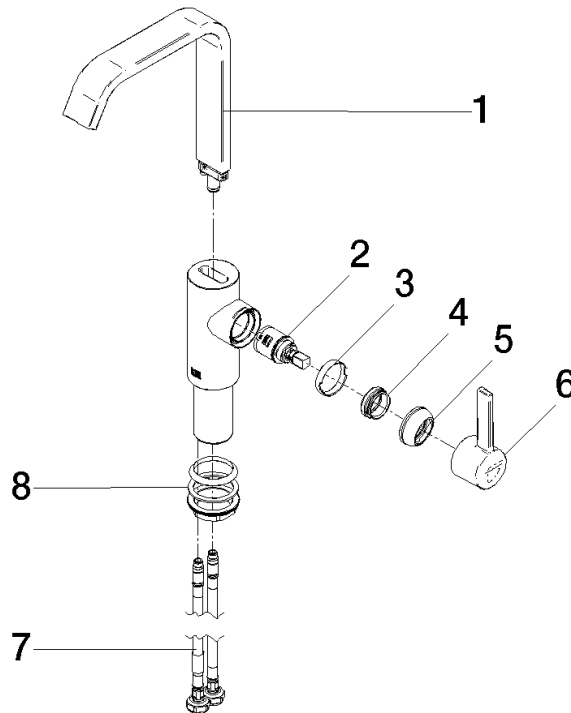
NSF372 NSF61 WaterSense



## Certificates and sustainability

IAPMO\_N-4976 IAPMO\_6397 IAPMO\_8834 IAPMO\_4976 (

Parts for other  
finishes can be found  
here: [Chrome](#)



## Spare parts list

Number	Item Number	Designation	Number of units	Lead time
6	90 20 67 027 00-33	handle	1.00	30
2	90 15 05 042 00 90	cartridge	1.00	2
1	90 28 22 404 00-33	spout	1.00	-
Spare part can no longer be ordered, please order the replacement item				
8	04 23 10 044 07 90	fixing set	1.00	2
4	09 24 04 266 90	nut	1.00	2
5	90 28 30 061 00-33	cover	1.00	-
Spare part can no longer be ordered, please order the replacement item				
7	04 30 04 102 00 90	Flexible supply line 3/8" -	2.00	2
3	90 23 10 128 00 90	nut	1.00	2