



LISSÉ Single-lever lavatory mixer with extended shank without drain - Brushed Chrome

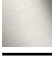
LISSÉ

33 526 845 Product version from 3/9/2016 to 10/31/2018



- 5-1/8" Projection
- Rigid spout
- Round aerated stream
- Total height 9-1/4"
- Height to aerator/spout outlet 7-1/4"
- 1-3/8" hole diameter
- 2 x pressure hose with 3/8" compression fitting
- Water flow rate limited to max. 1.2 gpm
- lead-free
- This product can help a building meet the requirements of Green Building Rating Systems, e.g. LEED®, BREEAM®, DGNB

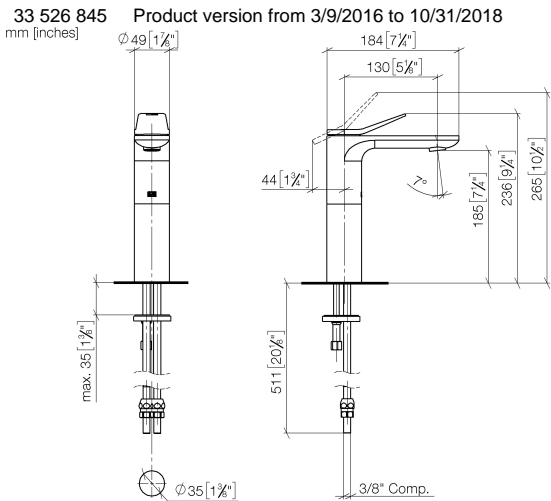
(ADA)

	Brushed Chrome	33 526 845-93 0010
	Chrome	33 526 845-00 0010
	Brushed Platinum	33 526 845-06 0010
	Dark Chrome	33 526 845-19 0010
	Brushed Light Gold	33 526 845-27 0010
	Matte Black	33 526 845-33 0010
	Brushed Dark Platinum	33 526 845-99 0010



LISSÉ Single-lever lavatory mixer with extended shank without drain - Brushed Chrome

LISSÉ



Codes & Standards

ADA	ASME A112.18.1	California Energy Commission (CEC)	cUPC
EPA WaterSense	NSF372	NSF61	WaterSense



Certificates and sustainability

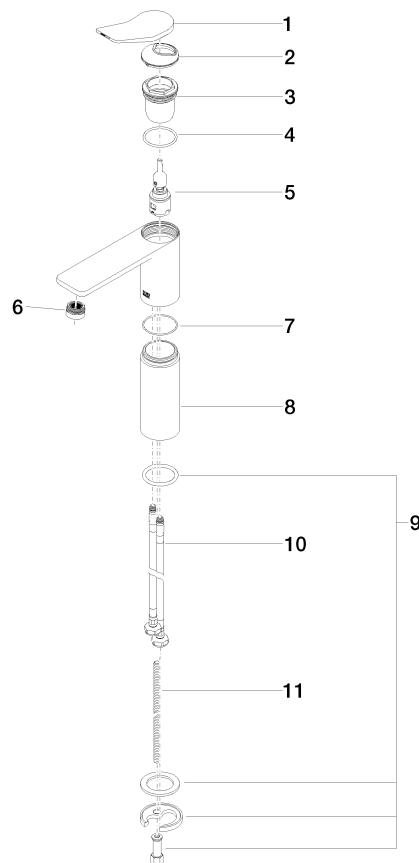
IAPMO_N-4976	IAPMO_6397	IAPMO_8834	IAPMO_4976 (
--------------	------------	------------	--------------

LISSÉ Single-lever lavatory mixer with extended shank without drain - Brushed Chrome

LISSÉ

33 526 845 Product version from 3/9/2016 to 10/31/2018

Parts for other
finishes can be found
here: [Chrome](#)



Spare parts list

Number	Item Number	Designation	Number of units	Lead time
3	09 23 10 123 90	nut	1.00	2
6	90 23 01 161 03-93	aerator	1.00	-
Spare part can no longer be ordered, please order the replacement item				
8	09 28 22 308-93	sleeve	1.00	20
10	04 30 04 103 00 90	hose	2.00	2
1	90 20 84 020 00-93	handle	1.00	20
4	09 14 10 038 90	seal	1.00	2
9	04 30 11 038 75 90	fixing set	1.00	2
2	09 28 30 034 90	cover	1.00	2
7	09 14 10 108 90	seal	1.00	2
5	90 15 05 042 01 90	cartridge	1.00	2
11	09 31 11 000 90	pin	1.00	2