

## VAIA Single-lever lavatory mixer with extended shank without drain - Chrome

VAIA

33 534 809 Product version from 3/6/2017



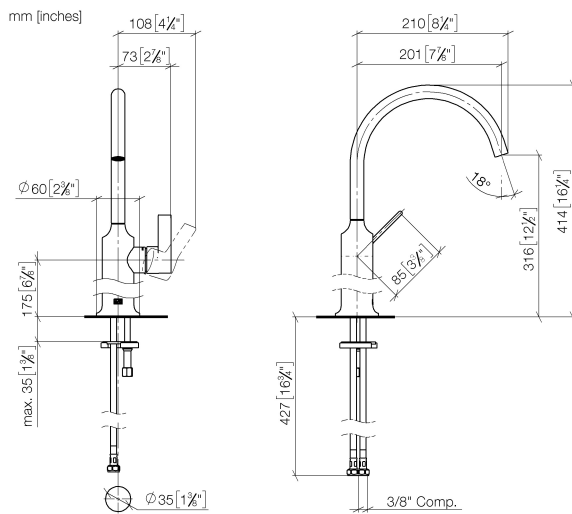
- 7-7/8" Projection
- Swiveling spout 360°
- Round aerated stream
- Total height 16-1/4"
- Height to aerator/spout outlet 12-1/2"
- 1-3/8" hole diameter
- 2 x pressure hose with 3/8" compression fitting
- Water flow rate limited to max. 1.2 gpm
- lead-free
- This product can help a building meet the requirements of Green Building Rating Systems, e.g. LEED®, BREEAM®, DGNB

(ADA)

For combination with vessel sinks.

	Chrome	33 534 809-00 0010
	Brushed Platinum	33 534 809-06 0010
	Platinum	33 534 809-08 0010
	Dark Chrome	33 534 809-19 0010
	Brushed Durabronze (23kt Gold)	33 534 809-28 0010
	Brushed Bronze	33 534 809-42 0010
	Brushed Champagne (22kt Gold)	33 534 809-46 0010
	Champagne (22kt Gold)	33 534 809-47 0010
	Brushed Dark Platinum	33 534 809-99 0010

33 534 809 Product version from 3/6/2017



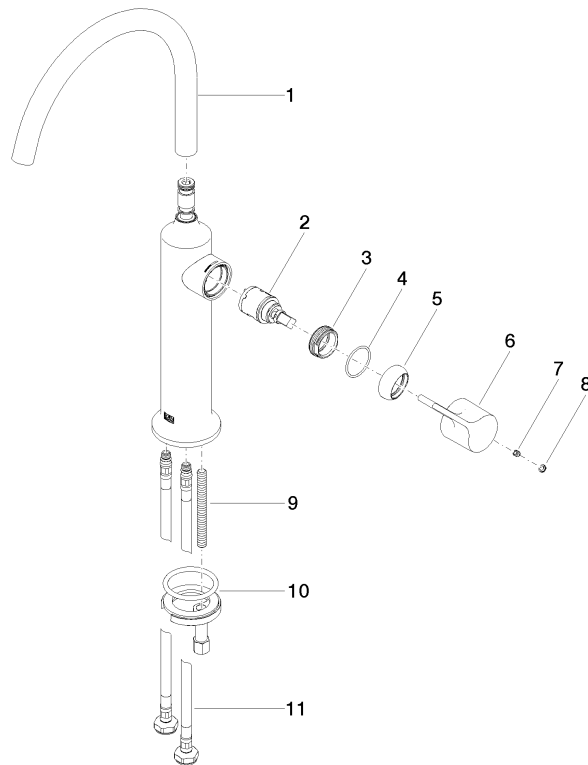
#### Codes & Standards

ADA	ASME A112.18.1	California Energy Commission (CEC)	cUPC
EPA WaterSense	NSF372	NSF61	WaterSense



#### Certificates and sustainability

IAPMO\_N-4976 IAPMO\_6397 IAPMO\_8834 IAPMO\_4976 (



## Spare parts list

Number	Item Number	Designation	Number of units	Lead time
8	90 31 20 087 00-00	plug	1.00	10
10	04 30 11 038 00 90	fixing set	1.00	2
3	09 24 04 266 90	nut	1.00	2
11	04 30 04 103 00 90	hose	2.00	2
4	09 14 10 091 90	seal	1.00	2
1	90 28 22 313 01-00	spout	1.00	10
5	09 28 30 021-00	cover	1.00	10
2	90 15 05 042 00 90	cartridge	1.00	2
9	09 31 11 011 90	pin	1.00	2
7	90 31 11 030 00 90	pin	1.00	2
6	90 20 80 070 00-00	handle	1.00	10