




# LISSÉ Single-lever lavatory mixer with extended shank without drain - Chrome

33 537 845    Product version from 5/3/2021



- 8-1/2" Projection
- Rigid spout
- Round aerated stream
- Total height 11-1/2"
- Height to aerator/spout outlet 9-1/2"
- 1-3/8" hole diameter
- 2 x pressure hose with 3/8" compression fitting
- Water flow rate limited to max. 1.2 gpm
- lead-free
- This product can help a building meet the requirements of Green Building Rating Systems, e.g. LEED®, BREEAM®, DGNB

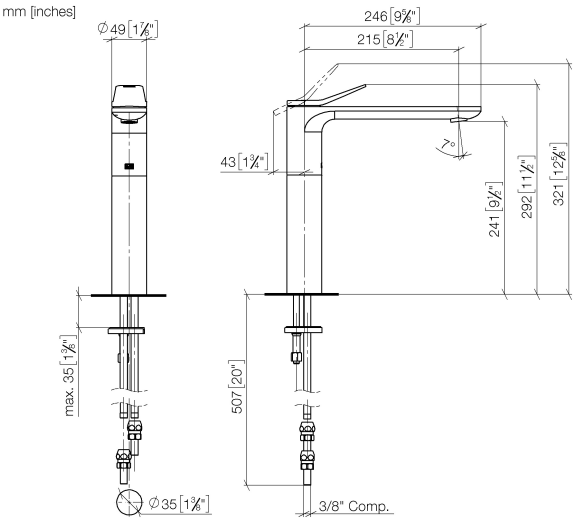
(ADA)  
For combination with vessel sinks.

	Chrome	33 537 845-00 0010
	Brushed Platinum	33 537 845-06 0010
	Dark Chrome	33 537 845-19 0010
	Brushed Light Gold	33 537 845-27 0010
	Matte Black	33 537 845-33 0010
	Brushed Chrome	33 537 845-93 0010
	Brushed Dark Platinum	33 537 845-99 0010



LISSE Single-lever lavatory mixer with extended shank without drain - Chrome

33 537 845 Product version from 5/3/2021



Codes & Standards

ADA	ASME A112.18.1	ASME A112.18.1/CSA B125.1	California Energy Commission (CEC)
cUPC	EPA WaterSense	NSF/ANSI 372	NSF/ANSI/CAN 61
NSF372	NSF61	Water Sense	WaterSense

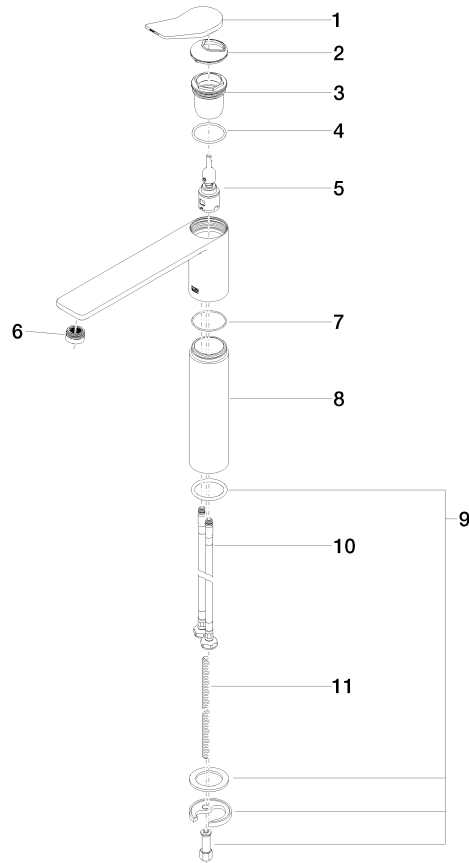


Certificates

IAPMO_N-4976	IAPMO_6397	IAPMO_8834	IAPMO_4976 (
--------------	------------	------------	--------------

**LISSE Single-lever lavatory mixer with extended shank without drain - Chrome**

33 537 845 Product version from 5/3/2021



**Spare parts list**

Number	Item Number	Designation	Number of units	Lead time
1	90 20 84 020 00-00	handle	1	10
2	09 28 30 034 90	cover	1	2
3	09 23 10 123 90	nut	1	2
4	09 14 10 038 90	seal	1	2
5	90 15 05 042 01 90	cartridge	1	2
6	90 23 01 161 03-00	aerator	1	10
7	09 14 10 108 90	seal	1	2
8	09 28 22 306-00	sleeve	1	10
9	04 30 11 038 75 90	fixing set	1	2
10	04 30 04 103 00 90	hose	2	2
11	09 31 11 095 90	pin	1	2