



Single-lever bidet mixer with drain - Brushed Dark Platinum

SERIES SPECIFIC

33 600 782



- 4-3/8" Projection
- US drain with overflow
- Ball-joint pivotable through 44°
- Rectangular aerated stream
- Total height 7-1/8"
- Height to aerator/spout outlet 5-1/2"
- 1-3/8" hole diameter
- 2 x pressure hose with 3/8" compression fitting
- Water flow rate limited to max. 1.6 gpm

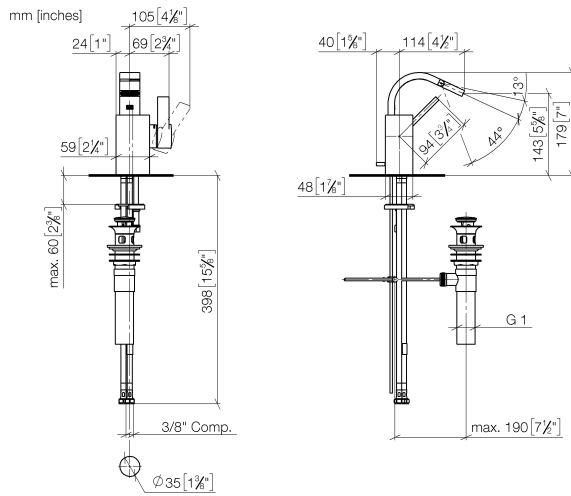
(ADA)

	Brushed Dark Platinum	33 600 782-99 0010
	Chrome	33 600 782-00 0010
	Brushed Platinum	33 600 782-06 0010
	Dark Chrome	33 600 782-19 0010
	Brushed Durabronze (23kt Gold)	33 600 782-28 0010

Single-lever bidet mixer with drain - Brushed Dark Platinum

SERIES SPECIFIC

33 600 782



Codes & Standards

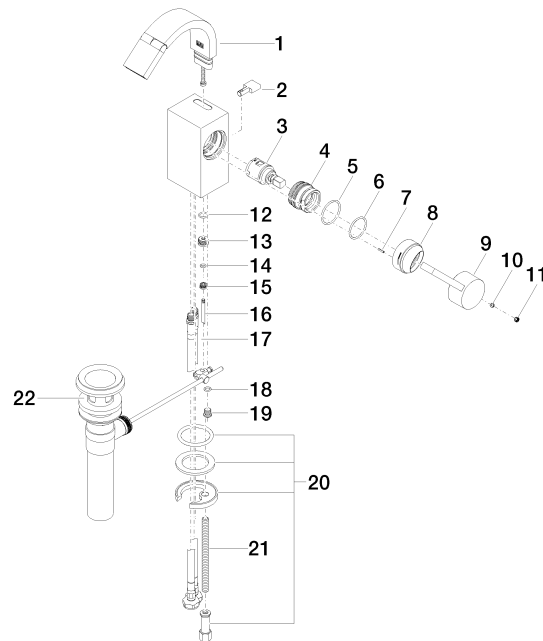
ADA

Single-lever bidet mixer with drain - Brushed Dark Platinum

SERIES SPECIFIC

33 600 782

Parts for other
finishes can be found
here: [Chrome](#)





Single-lever bidet mixer with drain - Brushed Dark Platinum

SERIES SPECIFIC

33 600 782

Spare parts list

Number	Item Number	Designation	Number of units	Lead time
2	09 20 78 032-99	handle	1.00	20
5	09 14 10 137 90	seal	1.00	2
17	04 30 04 106 00 90	hose	2.00	2
21	09 31 11 012 90	pin	1.00	2
13	09 24 04 289-99	nipple	1.00	20
18	09 14 10 132 90	seal	1.00	2
20	04 30 11 038 75 90	fixing set	1.00	2
19	09 31 20 027 10-00	plug	1.00	10
9	09 20 78 057-99	handle	1.00	20
14	09 14 10 166 90	seal	1.00	2
12	09 14 10 042 90	seal	1.00	2
8	09 28 30 028-99	cover	1.00	20
16	09 31 09 080-99	pull-rod	1.00	20
15	09 24 04 290 90	nipple	1.00	2
4	09 24 04 288 90	nut	1.00	2
3	90 15 05 042 00 90	cartridge	1.00	2
1	90 28 22 265 00-99	spout	1.00	20
7	09 31 11 152 90	pin	1.00	2
11	90 31 20 109 00 90	plug	1.00	2
22	90 11 01 023 00-99	pop-up waste	1.00	20
10	90 31 11 063 00 90	pin	1.00	2
6	90 14 10 063 00 90	seal	1.00	2