

VAIA Single-lever mixer - Brushed Platinum

VAIA

33 800 809 Product version from 7/1/2023



- 8" Projection
- Swiveling spout 360°
- Aerated stream
- Total height 12-3/8"
- Height to aerator/spout outlet 8-1/2"
- 1-3/8" hole diameter
- 2 x pressure hose with 3/8" compression fitting
- Water flow rate limited to max. 1.5 gpm
- lead-free
- This product can help a building meet the requirements of Green Building Rating Systems, e.g. LEED®, BREEAM®, DGNB

(ADA)

Combination with side spray set or profi side spray set not possible.

| | | |
|---|--------------------------------|--------------------|
|  | Brushed Platinum | 33 800 809-06 0010 |
|  | Chrome | 33 800 809-00 0010 |
|  | Platinum | 33 800 809-08 0010 |
|  | Durabronze (23kt Gold) | 33 800 809-09 0010 |
|  | Dark Chrome | 33 800 809-19 0010 |
|  | Brushed Durabronze (23kt Gold) | 33 800 809-28 0010 |
|  | Matte Black | 33 800 809-33 0010 |
|  | Brushed Bronze | 33 800 809-42 0010 |
|  | Brushed Champagne (22kt Gold) | 33 800 809-46 0010 |
|  | Champagne (22kt Gold) | 33 800 809-47 0010 |
|  | Brushed Chrome | 33 800 809-93 0010 |
|  | Brushed Dark Platinum | 33 800 809-99 0010 |

Recommended article

VAIA Soap dispenser with flange - 82 434 809-06
Brushed Platinum

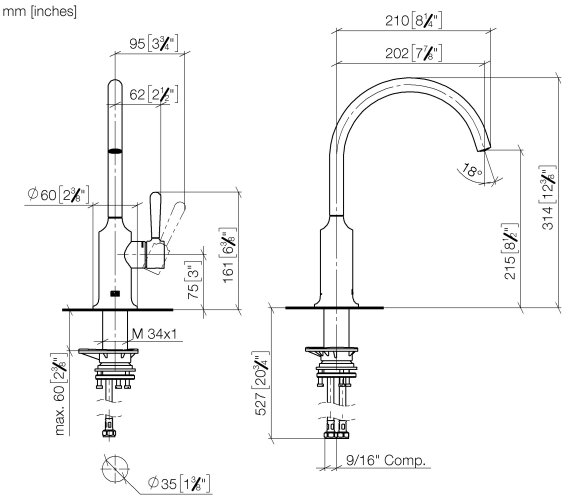


Recommended article

VAIA AIR SWITCH operating 10 713 809-06
button, trim parts only - Brushed
Platinum



33 800 809 Product version from 7/1/2023



Codes & Standards

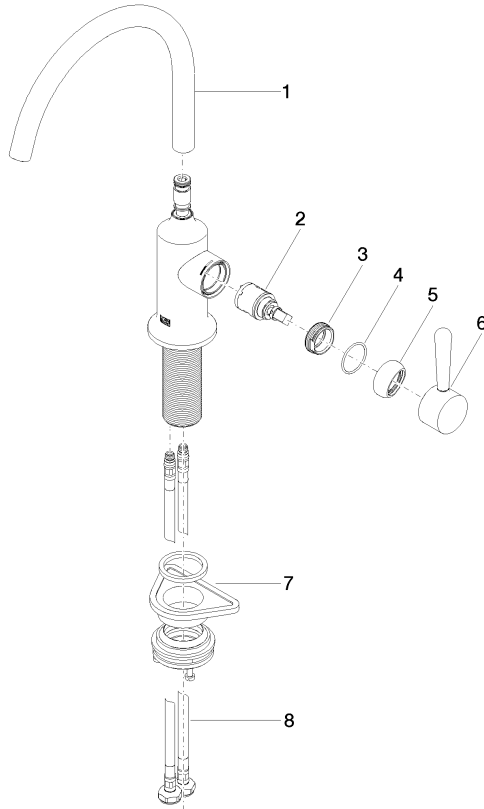
| | | | |
|--------|----------------|------------------------------------|------|
| ADA | ASME A112.18.1 | California Energy Commission (CEC) | cUPC |
| NSF372 | NSF61 | | |

Certificates and sustainability

| | | |
|--------------|------------|--------------|
| IAPMO_N-4976 | IAPMO_6397 | IAPMO_4976 (|
|--------------|------------|--------------|

33 800 809 Product version from 7/1/2023

Parts for other
finishes can be found
here: [Chrome](#)



Spare parts list

| Number | Item Number | Designation | Number of units | Lead time |
|--------|--------------------|-------------|-----------------|-----------|
| 3 | 09 24 04 266 90 | nut | 1.00 | 2 |
| 5 | 90 28 30 052 00-06 | cover | 1.00 | 10 |
| 6 | 90 20 80 050 00-06 | handle | 1.00 | 10 |
| 8 | 04 30 04 103 00 90 | hose | 2.00 | 2 |
| 2 | 90 15 05 042 00 90 | cartridge | 1.00 | 2 |
| 4 | 09 14 10 091 90 | seal | 1.00 | 2 |
| 1 | 90 28 22 313 00-06 | spout | 1.00 | 10 |
| 7 | 04 23 10 044 08 90 | fixing set | 1.00 | 2 |