

META SQUARE Single-lever mixer - Platinum

META SQUARE

33 800 861 Product version from 2/1/2023



- 7-7/8" Projection
- Swiveling spout 360°
- Optional restricted swivel available with swivel limiter set 12 820 970 90
- Aerated stream
- Total height 13-1/8"
- Height to aerator/spout outlet 10-1/8"
- 1-3/8" hole diameter
- 2 x pressure hose with 3/8" compression fitting
- Water flow rate limited to max. 1.5 gpm
- lead-free
- This product can help a building meet the requirements of Green Building Rating Systems, e.g. LEED®, BREEAM®, DGNB

(ADA)

Combination with side spray set or profi side spray set not possible.

| | | |
|---|--------------------------------|--------------------|
|  | Platinum | 33 800 861-08 0010 |
|  | Chrome | 33 800 861-00 0010 |
|  | Brushed Platinum | 33 800 861-06 0010 |
|  | Durabronze (23kt Gold) | 33 800 861-09 0010 |
|  | Dark Chrome | 33 800 861-19 0010 |
|  | Brushed Durabronze (23kt Gold) | 33 800 861-28 0010 |
|  | Matte Black | 33 800 861-33 0010 |
|  | Brushed Bronze | 33 800 861-42 0010 |
|  | Brushed Champagne (22kt Gold) | 33 800 861-46 0010 |
|  | Champagne (22kt Gold) | 33 800 861-47 0010 |
|  | Brushed Chrome | 33 800 861-93 0010 |
|  | Brushed Dark Platinum | 33 800 861-99 0010 |

Recommended article

Swivel limiter set -

12 820 970 90



Recommended article

AIR SWITCH operating button, trim parts only - Platinum

10 713 970-08



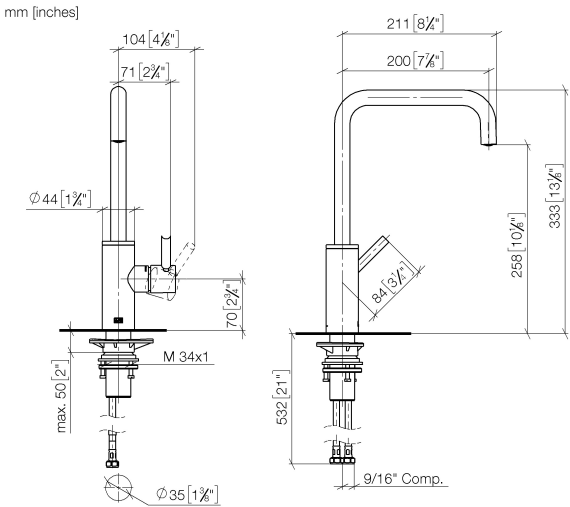
Recommended article

Soap dispenser with flange - Platinum

82 444 970-08



33 800 861 Product version from 2/1/2023

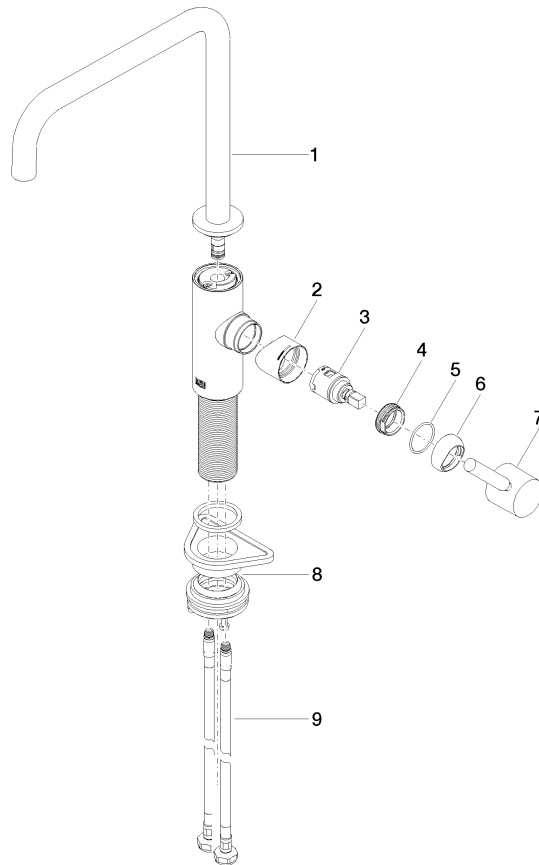


Codes & Standards

| | | | |
|--------|----------------|------------------------------------|------|
| ADA | ASME A112.18.1 | California Energy Commission (CEC) | cUPC |
| NSF372 | NSF61 | | |

Certificates and sustainability

IAPMO_6397 IAPMO_N-4976 IAPMO_4976 (



Spare parts list

| Number | Item Number | Designation | Number of units | Lead time |
|--------|--------------------|-------------|-----------------|-----------|
| 2 | 09 19 86 012-08 | cover | 1.00 | 60 |
| 4 | 09 24 04 266 90 | nut | 1.00 | 2 |
| 6 | 90 28 30 052 00-08 | cover | 1.00 | 40 |
| 9 | 04 30 04 101 00 90 | hose | 2.00 | 2 |
| 5 | 09 14 10 091 90 | seal | 1.00 | 2 |
| 1 | 90 28 22 334 01-08 | spout | 1.00 | 40 |
| 7 | 90 20 66 003 00-08 | handle | 1.00 | 40 |
| 3 | 90 15 05 042 00 90 | cartridge | 1.00 | 2 |
| 8 | 04 23 10 044 08 90 | fixing set | 1.00 | 2 |