

MEM BAR TAP Single-lever mixer - Brushed Platinum

MEM

33 805 682 Product version from 3/1/2023



- 6-1/2" Projection
- Swiveling spout 360°
- Optional restricted swivel available with swivel limiter set 12 820 970 90
- Aerated stream
- Total height 12-5/8"
- 8-1/2" height to aerator/spout outlet
- 1-3/8" hole diameter
- 2 x pressure hose with 3/8" compression fitting
- Water flow rate limited to max. 1.5 gpm
- lead-free
- This product can help a building meet the requirements of Green Building Rating Systems, e.g. LEED®, BREEAM®, DGNB

(ADA)

Combination with side spray set or profi side spray set not possible.

	Brushed Platinum	33 805 682-06 0010
	Chrome	33 805 682-00 0010
	Platinum	33 805 682-08 0010
	Durabronze (23kt Gold)	33 805 682-09 0010
	Dark Chrome	33 805 682-19 0010
	Brushed Durabronze (23kt Gold)	33 805 682-28 0010
	Matte Black	33 805 682-33 0010
	Brushed Bronze	33 805 682-42 0010
	Brushed Champagne (22kt Gold)	33 805 682-46 0010
	Champagne (22kt Gold)	33 805 682-47 0010
	Brushed Chrome	33 805 682-93 0010
	Brushed Dark Platinum	33 805 682-99 0010

Recommended article

Swivel limiter set -

12 820 970 90



Recommended article

**Soap dispenser without flange -
Brushed Platinum**

82 424 970-06



Recommended article

**AIR SWITCH operating button,
trim parts only - Brushed Platinum**

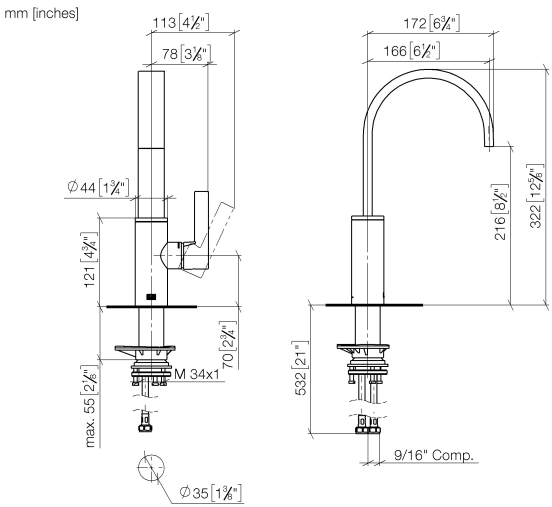
10 713 970-06



MEM BAR TAP Single-lever mixer - Brushed Platinum

MEM

33 805 682 Product version from 3/1/2023



Codes & Standards

ADA	ASME A112.18.1	California Energy Commission (CEC)	cUPC
NSF372	NSF61		

Certificates and sustainability

IAPMO_6397 IAPMO_N-4976 IAPMO_4976 (



Spare parts list

Number	Item Number	Designation	Number of units	Lead time
2	09 19 86 012-06	cover	1.00	60
7	90 20 86 004 00-06	handle	1.00	10
9	04 30 04 103 00 90	hose	2.00	2
1	90 28 22 282 01-06	spout	1.00	10
8	04 23 10 044 08 90	fixing set	1.00	2
3	90 23 10 128 00 90	nut	1.00	2
6	90 28 30 052 00-06	cover	1.00	10
4	90 15 05 042 00 90	cartridge	1.00	2
5	09 24 04 266 90	nut	1.00	2