

## MEM BAR TAP Single-lever mixer - Brushed Dark Platinum

MEM

33 805 682 Product version from 3/1/2023



- 6-1/2" Projection
- Swiveling spout 360°
- Optional restricted swivel available with swivel limiter set 12 820 970 90
- Aerated stream
- Total height 12-5/8"
- 8-1/2" height to aerator/spout outlet
- 1-3/8" hole diameter
- 2 x pressure hose with 3/8" compression fitting
- Water flow rate limited to max. 1.5 gpm
- lead-free
- This product can help a building meet the requirements of Green Building Rating Systems, e.g. LEED®, BREEAM®, DGNB

(ADA)

Combination with side spray set or profi side spray set not possible.

	Brushed Dark Platinum	33 805 682-99 0010
	Chrome	33 805 682-00 0010
	Brushed Platinum	33 805 682-06 0010
	Platinum	33 805 682-08 0010
	Durabronze (23kt Gold)	33 805 682-09 0010
	Dark Chrome	33 805 682-19 0010
	Brushed Durabronze (23kt Gold)	33 805 682-28 0010
	Matte Black	33 805 682-33 0010
	Brushed Bronze	33 805 682-42 0010
	Brushed Champagne (22kt Gold)	33 805 682-46 0010
	Champagne (22kt Gold)	33 805 682-47 0010
	Brushed Chrome	33 805 682-93 0010

### Recommended article

**Swivel limiter set -**

12 820 970 90



### Recommended article

**Soap dispenser without flange -  
Brushed Dark Platinum**

82 424 970-99



### Recommended article

**AIR SWITCH operating button,  
trim parts only - Brushed Dark  
Platinum**

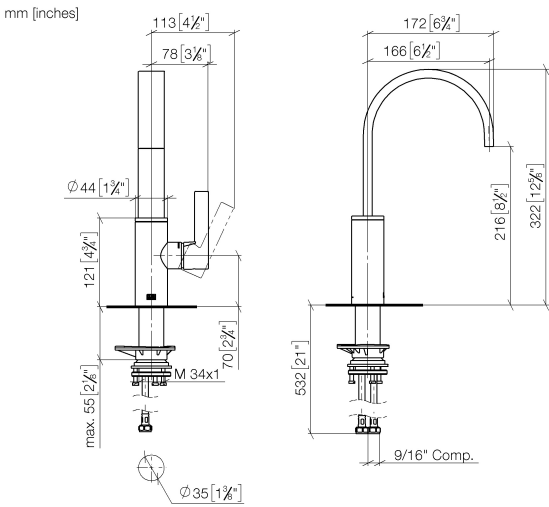
10 713 970-99



MEM BAR TAP Single-lever mixer - Brushed Dark Platinum

MEM

33 805 682    Product version from 3/1/2023



Codes & Standards

ADA	ASME A112.18.1	California Energy Commission (CEC)	cUPC
NSF372	NSF61		

Certificates and sustainability

IAPMO\_6397      IAPMO\_N-4976      IAPMO\_4976 (



## Spare parts list

Number	Item Number	Designation	Number of units	Lead time
3	90 23 10 128 00 90	nut	1.00	2
7	90 20 86 004 00-99	handle	1.00	20
9	04 30 04 103 00 90	hose	2.00	2
1	90 28 22 282 01-99	spout	1.00	20
6	90 28 30 052 00-99	cover	1.00	20
2	09 19 86 012-99	cover	1.00	60
4	90 15 05 042 00 90	cartridge	1.00	2
8	04 23 10 044 08 90	fixing set	1.00	2
5	09 24 04 266 90	nut	1.00	2