

VAIA BAR TAP Single-lever mixer - Platinum
VAIA

33 805 809
Product version from 7/1/2023



- 6-5/8" Projection
 - Center to center "
 - Swiveling spout 360°
 - Aerated stream
 - Total height 12"
 - 8-7/8" height to aerator/spout outlet
 - 1-3/8" hole diameter
 - 2 x pressure hose with 3/8" compression fitting
 - Water flow rate limited to max. 1.5 gpm
 - lead-free
 - This product can help a building meet the requirements of Green Building Rating Systems, e.g. LEED®, BREEAM®, DGNB
- (ADA)
- Combination with side spray set or profi side spray set not possible.

| | | |
|---|--------------------------------|--------------------|
|  | Platinum | 33 805 809-08 0010 |
|  | Chrome | 33 805 809-00 0010 |
|  | Brushed Platinum | 33 805 809-06 0010 |
|  | Durabronze (23kt Gold) | 33 805 809-09 0010 |
|  | Dark Chrome | 33 805 809-19 0010 |
|  | Brushed Durabronze (23kt Gold) | 33 805 809-28 0010 |
|  | Matte Black | 33 805 809-33 0010 |
|  | Brushed Bronze | 33 805 809-42 0010 |
|  | Brushed Champagne (22kt Gold) | 33 805 809-46 0010 |
|  | Champagne (22kt Gold) | 33 805 809-47 0010 |
|  | Brushed Chrome | 33 805 809-93 0010 |
|  | Brushed Dark Platinum | 33 805 809-99 0010 |

Recommended article

VAIA Soap dispenser with flange - 82 434 809-08
Platinum

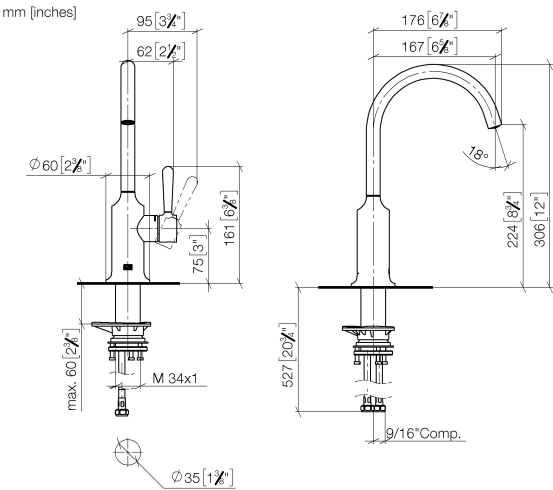


Recommended article

VAIA AIR SWITCH operating 10 713 809-08
button, trim parts only - Platinum



33 805 809 Product version from 7/1/2023



Codes & Standards

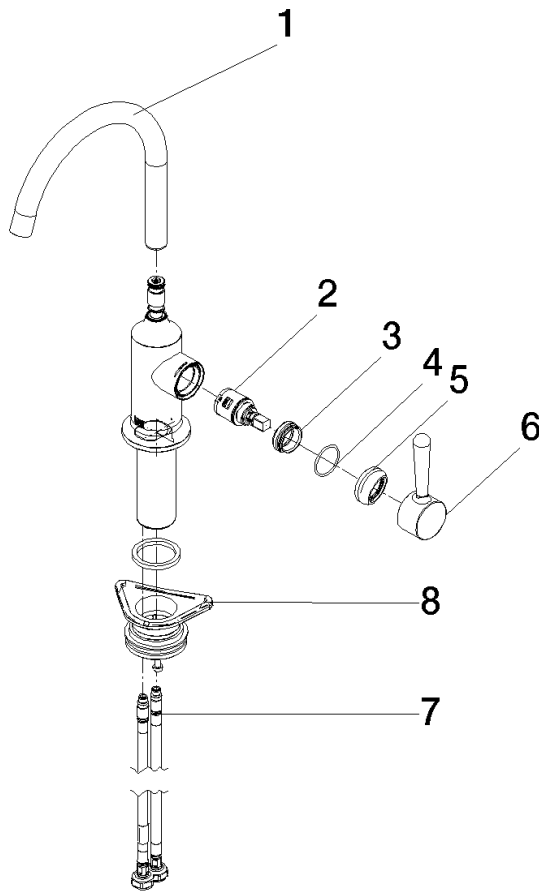
| | | | |
|--------|----------------|------------------------------------|------|
| ADA | ASME A112.18.1 | California Energy Commission (CEC) | cUPC |
| NSF372 | NSF61 | | |

Certificates and sustainability

| | | | |
|--------------|------------|--------------|--|
| IAPMO_N-4976 | IAPMO_6397 | IAPMO_4976 (| |
|--------------|------------|--------------|--|

33 805 809 Product version from 7/1/2023

Parts for other
finishes can be found
here: [Chrome](#)



Spare parts list

| Number | Item Number | Designation | Number of units | Lead time |
|--------|--------------------|-------------|-----------------|-----------|
| 7 | 04 30 04 103 00 90 | hose | 2.00 | 2 |
| 6 | 90 20 80 050 00-08 | handle | 1.00 | 40 |
| 4 | 09 14 10 091 90 | seal | 1.00 | 2 |
| 8 | 04 23 10 044 08 90 | fixing set | 1.00 | 2 |
| 1 | 90 28 22 311 00-08 | spout | 1.00 | 40 |
| 2 | 90 15 05 042 00 90 | cartridge | 1.00 | 2 |
| 5 | 90 28 30 052 00-08 | cover | 1.00 | 40 |
| 3 | 09 24 04 266 90 | nut | 1.00 | 2 |