

VAIA BAR TAP Single-lever mixer - Dark Chrome

33 805 809
Product version from 7/1/2023



- 6-5/8" Projection
 - Center to center "
 - Swiveling spout 360°
 - Aerated stream
 - Total height 12"
 - 8-7/8" height to aerator/spout outlet
 - 1-3/8" hole diameter
 - 2 x pressure hose with 3/8" compression fitting
 - Water flow rate limited to max. 1.5 gpm
 - lead-free
 - This product can help a building meet the requirements of Green Building Rating Systems, e.g. LEED®, BREEAM®, DGNB
- (ADA)
- Combination with side spray set or profi side spray set not possible.

	Dark Chrome	33 805 809-19 0010
	Chrome	33 805 809-00 0010
	Brushed Platinum	33 805 809-06 0010
	Platinum	33 805 809-08 0010
	Durabrass (23kt Gold)	33 805 809-09 0010
	Brushed Durabrass (23kt Gold)	33 805 809-28 0010
	Matte Black	33 805 809-33 0010
	Brushed Bronze	33 805 809-42 0010
	Brushed Champagne (22kt Gold)	33 805 809-46 0010
	Champagne (22kt Gold)	33 805 809-47 0010
	Brushed Chrome	33 805 809-93 0010
	Brushed Dark Platinum	33 805 809-99 0010

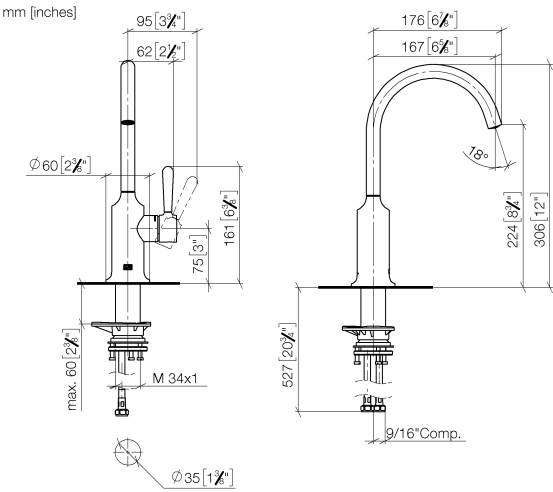
Recommended article

	VAIA AIR SWITCH operating button, trim parts only - Dark Chrome	10 713 809-19
---	--	---------------

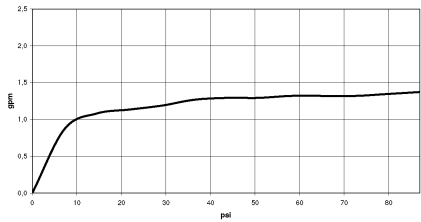


VAIA BAR TAP Single-lever mixer - Dark Chrome

33 805 809 Product version from 7/1/2023



Flow rate chart



Codes & Standards

ASME A112.18.1	California Energy Commission (CEC)	cUPC	NSF372
NSF61			



VAIA BAR TAP Single-lever mixer - Dark Chrome

33 805 809 Product version from 7/1/2023

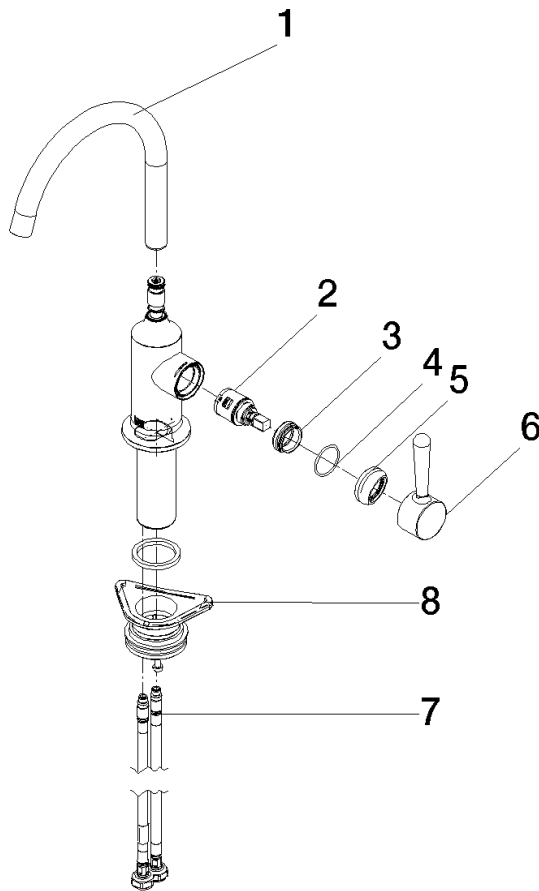
Certificates

IAPMO_N-4976 IAPMO_6397 IAPMO_4976 (

VAIA BAR TAP Single-lever mixer - Dark Chrome

33 805 809 Product version from 7/1/2023

Parts for other
finishes can be found
here: [Chrome](#)



Spare parts list

Number	Item Number	Designation	Number of units	Lead time
1	90 28 22 311 00-19	spout	1	20
2	90 15 05 042 00 90	cartridge	1	2
3	09 24 04 266 90	nut	1	2
4	09 14 10 091 90	seal	1	2
5	90 28 30 052 00-19	cover	1	20
6	90 20 80 050 00-19	handle	1	-
Spare part can no longer be ordered, please order the replacement item				
7	04 30 04 103 00 90	hose	2	2
8	04 23 10 044 08 90	fixing set	1	2