

## META SQUARE BAR TAP Single-lever mixer - Dark Chrome

META SQUARE

33 805 861 Product version from 10/1/2024




- 6-1/2" Projection
- Swiveling spout 360°
- Optional restricted swivel available with swivel limiter set 12 820 970 90
- Aerated stream
- Total height 12-1/8"
- Height to aerator/spout outlet 9-1/4"
- 1-3/8" hole diameter
- 2 x pressure hose with 3/8" compression fitting
- Water flow rate limited to max. 1.5 gpm
- lead-free
- This product can help a building meet the requirements of Green Building Rating Systems, e.g. LEED®, BREEAM®, DGNB

(ADA)

Combination with side spray set or profi side spray set not possible.

	Dark Chrome	33 805 861-19 0010
	Chrome	33 805 861-00 0010
	Brushed Platinum	33 805 861-06 0010
	Platinum	33 805 861-08 0010
	Durabrass (23kt Gold)	33 805 861-09 0010
	Brushed Durabrass (23kt Gold)	33 805 861-28 0010
	Matte Black	33 805 861-33 0010
	Brushed Bronze	33 805 861-42 0010
	Brushed Champagne (22kt Gold)	33 805 861-46 0010
	Champagne (22kt Gold)	33 805 861-47 0010
	Brushed Chrome	33 805 861-93 0010
	Brushed Dark Platinum	33 805 861-99 0010

## Recommended article

	<b>Swivel limiter set -</b>	12 820 970 90
---	-----------------------------	---------------


### Recommended article

	<b>AIR SWITCH operating button, trim parts only - Dark Chrome</b>	10 713 970-19
---	---	---------------

### Recommended article

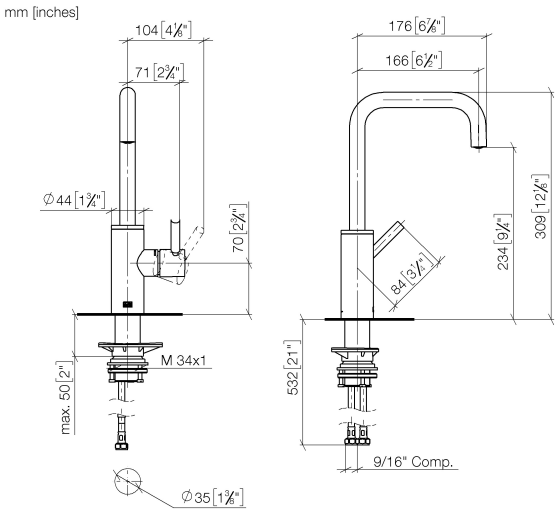
**Soap dispenser without flange -** 82 424 970-19  
**Dark Chrome**

### Recommended article

	<b>Soap dispenser without flange - Dark Chrome</b>	82 424 970-19
---	--	---------------

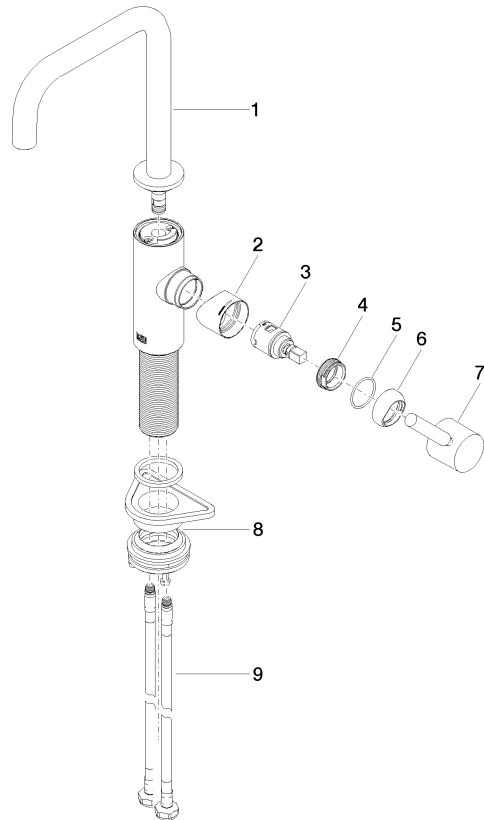
33 805 861

Product version from 10/1/2024



Codes & Standards			
ADA	ASME A112.18.1	California Energy Commission (CEC)	cUPC
NSF372	NSF61		

Certificates and sustainability			
IAPMO_6397	IAPMO_N-4976	IAPMO_4976 (	



Spare parts list

Number	Item Number	Designation	Number of units	Lead time
7	90 20 66 003 00-19	handle	1.00	20
3	90 15 05 042 00 90	cartridge	1.00	2
1	90 28 22 285 01-19	spout	1.00	20
8	04 23 10 044 08 90	fixing set	1.00	2
5	09 14 10 091 90	seal	1.00	2
9	04 30 04 103 00 90	hose	2.00	2
4	09 24 04 266 90	nut	1.00	2
2	09 19 86 012-19	cover	1.00	60
6	90 28 30 052 00-19	cover	1.00	20