

## TARA ULTRA BAR TAP Single-lever mixer - Brushed Durabronze (23kt Gold)

TARA ULTRA


33 805 875 Product version up to 5/15/2020



- 6-1/2" Projection
- Center to center "
- Swiveling spout 360°
- Laminar stream
- Total height 11-7/8"
- 7-3/8" height to aerator/spout outlet
- 1-3/8" hole diameter
- 2 x pressure hose with 3/8" compression fitting
- Water flow rate limited to max. 1.5 gpm
- lead-free
- This product can help a building meet the requirements of Green Building Rating Systems, e.g. LEED®, BREEAM®, DGNB

(ADA)

Combination with side spray set or profi side spray set not possible.

	Brushed Durabronze (23kt Gold)	33 805 875-28 0010
	Chrome	33 805 875-00 0010
	Brushed Platinum	33 805 875-06 0010
	Platinum	33 805 875-08 0010
	Durabronze (23kt Gold)	33 805 875-09 0010
	Dark Chrome	33 805 875-19 0010
	Matte Black	33 805 875-33 0010
	Brushed Bronze	33 805 875-42 0010
	Brushed Champagne (22kt Gold)	33 805 875-46 0010
	Champagne (22kt Gold)	33 805 875-47 0010
	Brushed Chrome	33 805 875-93 0010
	Brushed Dark Platinum	33 805 875-99 0010

### Recommended article

**Soap dispenser without flange - Brushed Durabronze (23kt Gold)** 82 424 970-28



### Recommended article

**AIR SWITCH operating button, trim parts only - Brushed Durabronze (23kt Gold)** 10 713 970-28

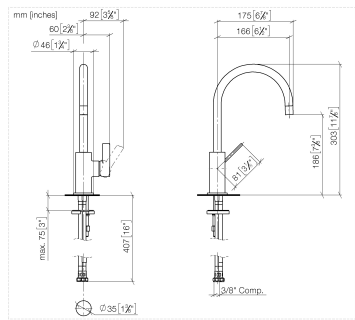




TARA ULTRA BAR TAP Single-lever mixer - Brushed Durabronz (23kt Gold)

TARA ULTRA

33 805 875 Product version up to 5/15/2020



Codes & Standards

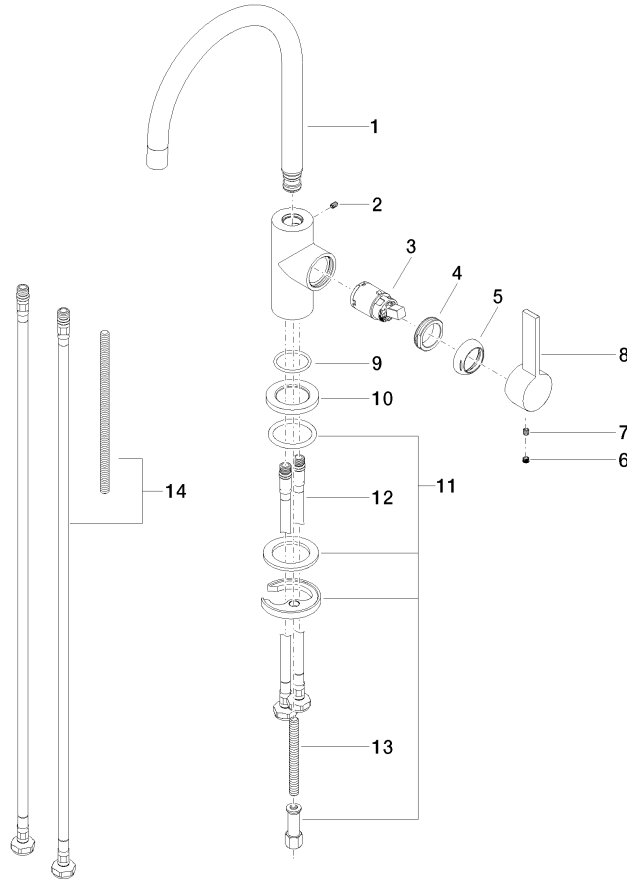
ADA	California Energy Commission (CEC)	NSF372	NSF61
-----	------------------------------------	--------	-------

Certificates and sustainability

IAPMO\_N-4976 IAPMO\_6397

33 805 875 Product version up to 5/15/2020

Parts for other  
finishes can be found  
here: [Chrome](#)



## Spare parts list

Number	Item Number	Designation	Number of units	Lead time
1	90 28 22 206 01-28	spout	1.00	20
11	04 30 11 038 64 90	fixing set	1.00	2
9	09 14 10 118 90	seal	1.00	2
14	12 803 970-90 0010	Extension set -	1.00	60
12	04 30 04 106 00 90	hose	2.00	2
2	09 31 11 008 90	pin	1.00	2
4	09 24 04 130-07	nut	1.00	30
13	09 31 11 011 90	pin	1.00	2
10	09 27 85 001-28	rosette	1.00	20
5	09 24 04 204-28	cover	1.00	20
3	90 15 05 041 00 90	cartridge	1.00	2
8	09 20 88 051-28	handle	1.00	20
7	90 31 11 030 00 90	pin	1.00	2
6	90 31 20 109 00 90	plug	1.00	2