

## TARA ULTRA BAR TAP Single-lever mixer - Brushed Bronze

33 805 875 Product version from 5/3/2021



- 6-1/2" Projection
- Center to center "
- Swiveling spout 360°
- Laminar stream
- Total height 11-7/8"
- 7-3/8" height to aerator/spout outlet
- 1-3/8" hole diameter
- 2 x pressure hose with 3/8" compression fitting
- Water flow rate limited to max. 1.5 gpm
- lead-free
- This product can help a building meet the requirements of Green Building Rating Systems, e.g. LEED®, BREEAM®, DGNB

(ADA)

Combination with side spray set or profi side spray set not possible.

	Brushed Bronze	33 805 875-42 0010
	Chrome	33 805 875-00 0010
	Brushed Platinum	33 805 875-06 0010
	Platinum	33 805 875-08 0010
	Durabronze (23kt Gold)	33 805 875-09 0010
	Dark Chrome	33 805 875-19 0010
	Brushed Durabronze (23kt Gold)	33 805 875-28 0010
	Matte Black	33 805 875-33 0010
	Brushed Champagne (22kt Gold)	33 805 875-46 0010
	Champagne (22kt Gold)	33 805 875-47 0010
	Brushed Chrome	33 805 875-93 0010
	Brushed Dark Platinum	33 805 875-99 0010

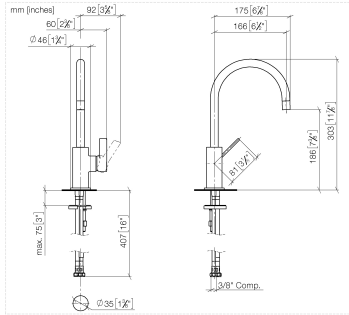
### Recommended article

**AIR SWITCH operating button, trim parts only - Brushed Bronze** 10 713 970-42

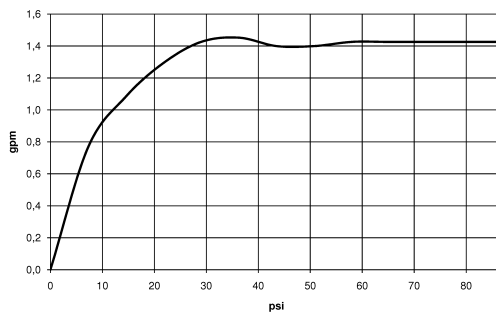


## TARA ULTRA BAR TAP Single-lever mixer - Brushed Bronze

33 805 875 Product version from 5/3/2021



### Flow rate chart



## Codes & Standards

ADA	ASME A112.18.1/CSA B125.1	California Energy Commission (CEC)	NSF/ANSI 372
NSF/ANSI/CAN 61	NSF372	NSF61	



## TARA ULTRA BAR TAP Single-lever mixer - Brushed Bronze

---

33 805 875 Product version from 5/3/2021

### Certificates

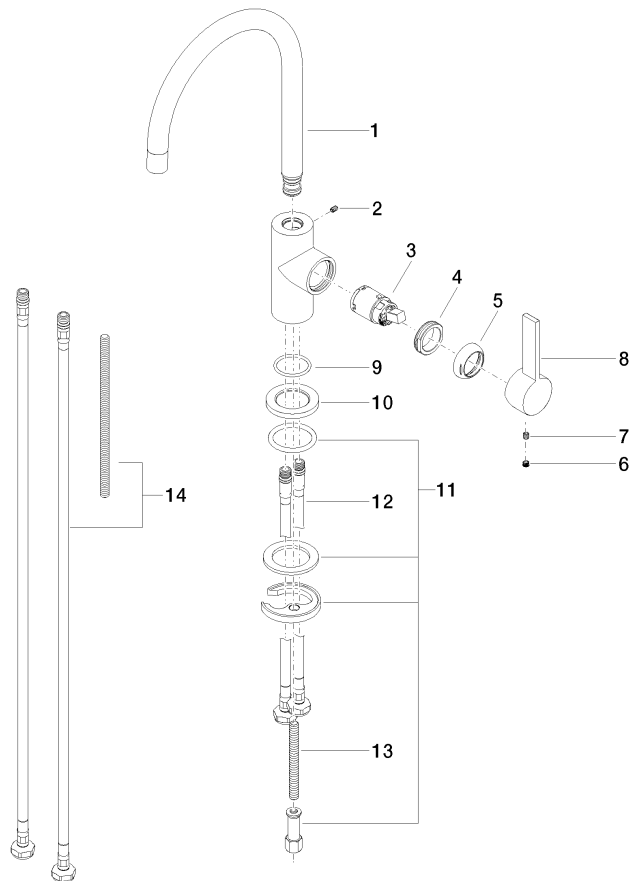
---

IAPMO\_N-4976 IAPMO\_6397

## TARA ULTRA BAR TAP Single-lever mixer - Brushed Bronze

33 805 875 Product version from 5/3/2021

Parts for other  
finishes can be found  
here: [Chrome](#)



### Spare parts list

Number	Item Number	Designation	Number of units	Lead time
1	90 28 22 206 01-42	spout	1	30
2	09 31 11 008 90	pin	1	2
3	90 15 05 041 00 90	cartridge	1	2
4	09 24 04 130-07	nut	1	30
5	09 24 04 204-42	cover	1	60
6	90 31 20 109 00 90	plug	1	2
7	90 31 11 030 00 90	pin	1	2
8	09 20 88 051-42	handle	1	60
9	09 14 10 118 90	seal	1	2
10	09 27 85 001-42	rosette	1	60
11	04 30 11 038 64 90	fixing set	1	2
12	04 30 04 106 00 90	hose	2	2
13	09 31 11 011 90	pin	1	2
14	12 803 970-90 0010	Extension set -	1	60