

TARA BAR TAP Single-lever mixer - Platinum

TARA

33 805 888



- 6-1/2" Projection
- Swiveling spout 360°
- Aerated stream
- Total height 11-7/8"
- Height to aerator/spout outlet 7-1/4"
- 1-3/8" hole diameter
- 2 x pressure hose with 3/8" compression fitting
- Water flow rate limited to max. 1.5 gpm
- lead-free
- This product can help a building meet the requirements of Green Building Rating Systems, e.g. LEED®, BREEAM®, DGNB

(ADA)

Combination with side spray set or profi side spray set not possible.

	Platinum	33 805 888-08 0010
	Chrome	33 805 888-00 0010
	Brushed Platinum	33 805 888-06 0010
	Durabronze (23kt Gold)	33 805 888-09 0010
	Dark Chrome	33 805 888-19 0010
	Brushed Durabronze (23kt Gold)	33 805 888-28 0010
	Matte Black	33 805 888-33 0010
	Brushed Bronze	33 805 888-42 0010
	Brushed Champagne (22kt Gold)	33 805 888-46 0010
	Champagne (22kt Gold)	33 805 888-47 0010
	Brushed Chrome	33 805 888-93 0010
	Brushed Dark Platinum	33 805 888-99 0010

Recommended article

Soap dispenser with flange - Platinum

82 444 970-08



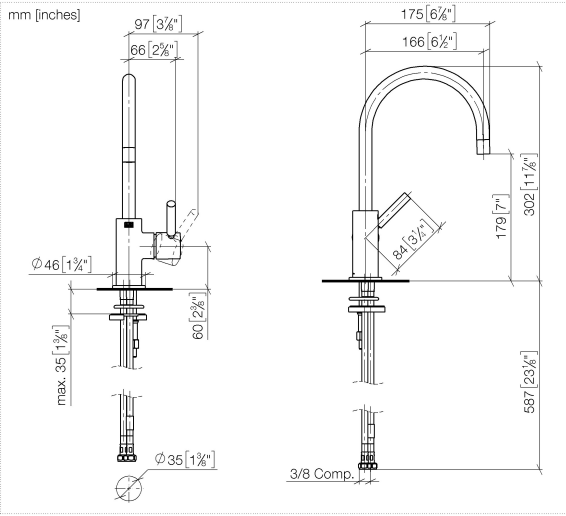
Recommended article

AIR SWITCH operating button, trim parts only - Platinum

10 713 970-08



33 805 888



Codes & Standards

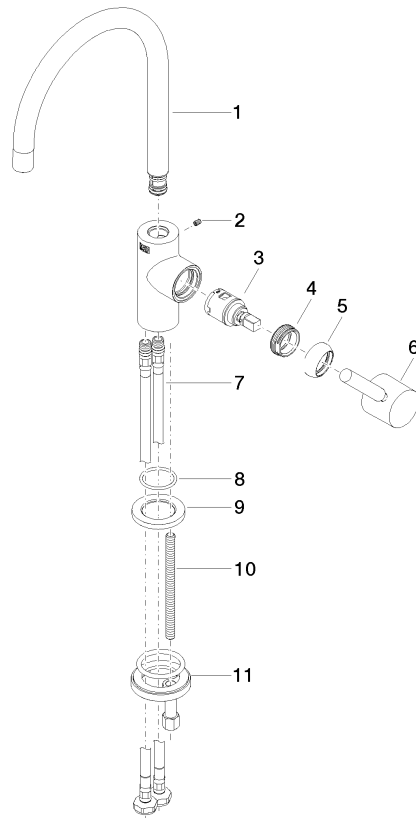
ADA	ASME A112.18.1	California Energy Commission (CEC)	cUPC
NSF372	NSF61		

Certificates and sustainability

IAPMO_6397	IAPMO_N-4976	IAPMO_4976 (
------------	--------------	--------------

33 805 888

Parts for other
finishes can be found
here: [Chrome](#)



Spare parts list

Number	Item Number	Designation	Number of units	Lead time
3	90 15 05 042 00 90	cartridge	1.00	2
2	09 31 11 008 90	pin	1.00	2
11	04 30 11 038 64 90	fixing set	1.00	2
4	09 24 04 266 90	nut	1.00	2
9	09 27 85 001-08	rosette	1.00	60
6	90 20 66 003 00-08	handle	1.00	40
8	09 14 10 118 90	seal	1.00	2
5	09 28 30 021-08	cover	1.00	40
7	04 30 04 107 00 90	hose	2.00	2
1	90 28 22 393 01-08	spout	1.00	40
10	09 31 11 012 90	pin	1.00	2