

TARA BAR TAP Single-lever mixer - Dark Chrome

33 805 888



- 6-1/2" Projection
- Swiveling spout 360°
- Aerated stream
- Total height 11-7/8"
- Height to aerator/spout outlet 7-1/4"
- 1-3/8" hole diameter
- 2 x pressure hose with 3/8" compression fitting
- Water flow rate limited to max. 1.5 gpm
- lead-free
- This product can help a building meet the requirements of Green Building Rating Systems, e.g. LEED®, BREEAM®, DGNB

(ADA)

Combination with side spray set or profi side spray set not possible.

| | | |
|---|-------------------------------|--------------------|
|  | Dark Chrome | 33 805 888-19 0010 |
|  | Chrome | 33 805 888-00 0010 |
|  | Brushed Platinum | 33 805 888-06 0010 |
|  | Platinum | 33 805 888-08 0010 |
|  | Durabrass (23kt Gold) | 33 805 888-09 0010 |
|  | Brushed Durabrass (23kt Gold) | 33 805 888-28 0010 |
|  | Matte Black | 33 805 888-33 0010 |
|  | Brushed Bronze | 33 805 888-42 0010 |
|  | Brushed Champagne (22kt Gold) | 33 805 888-46 0010 |
|  | Champagne (22kt Gold) | 33 805 888-47 0010 |
|  | Brushed Chrome | 33 805 888-93 0010 |
|  | Brushed Dark Platinum | 33 805 888-99 0010 |

Recommended article

Soap dispenser with flange - Dark Chrome 82 444 970-19



Recommended article

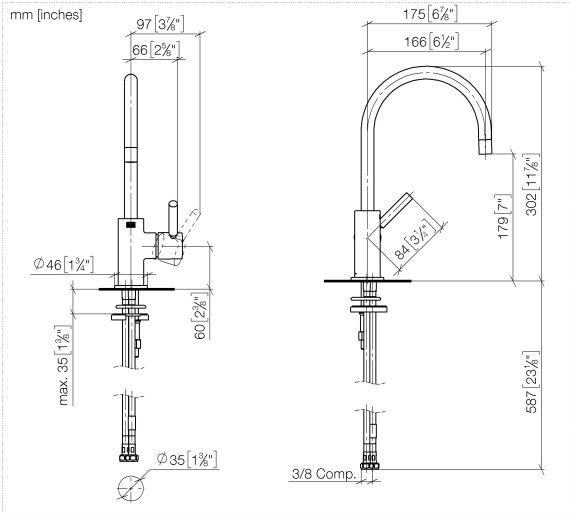
AIR SWITCH operating button, trim parts only - Dark Chrome 10 713 970-19



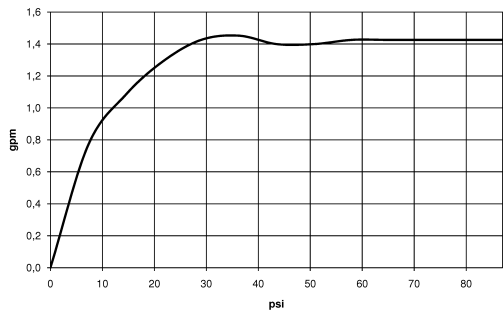


TARA BAR TAP Single-lever mixer - Dark Chrome

33 805 888



Flow rate chart



Codes & Standards

California Energy Commission (CEC) NSF372



TARA BAR TAP Single-lever mixer - Dark Chrome

33 805 888

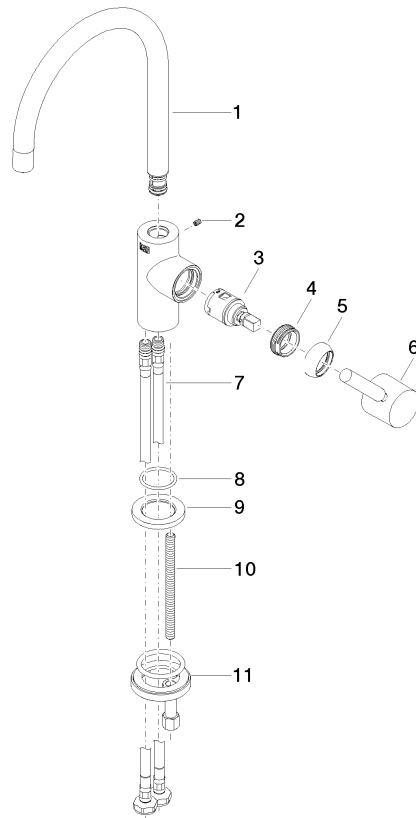
Certificates

IAPMO_6397

TARA BAR TAP Single-lever mixer - Dark Chrome

33 805 888

Parts for other
finishes can be found
here: [Chrome](#)



Spare parts list

| Number | Item Number | Designation | Number of units | Lead time |
|--------|--------------------|-------------|-----------------|-----------|
| 1 | 90 28 22 393 01-19 | spout | 1 | 20 |
| 2 | 09 31 11 008 90 | pin | 1 | 2 |
| 3 | 90 15 05 042 00 90 | cartridge | 1 | 2 |
| 4 | 09 24 04 266 90 | nut | 1 | 2 |
| 5 | 09 28 30 021-19 | cover | 1 | 20 |
| 6 | 90 20 66 003 00-19 | handle | 1 | 20 |
| 7 | 04 30 04 107 00 90 | hose | 2 | 2 |
| 8 | 09 14 10 118 90 | seal | 1 | 2 |
| 9 | 09 27 85 001-19 | rosette | 1 | 60 |
| 10 | 09 31 11 012 90 | pin | 1 | 2 |
| 11 | 04 30 11 038 64 90 | fixing set | 1 | 2 |