



VAIA Single-lever mixer For sprayer / professional sprayer - Brushed Durabrass (23kt Gold)

33 810 809    Product version from 7/1/2023



- 8" Projection
  - Swiveling spout 360°
  - Aerated stream
  - Water flow rate limited to max. 1.5 gpm
  - lead-free
  - This product can help a building meet the requirements of Green Building Rating Systems, e.g. LEED®, BREEAM®, DGNB
- (ADA)
- Single-lever mixer for use with rinsers and professional sprayers

	Brushed Durabrass (23kt Gold)	33 810 809-28 0010
	Chrome	33 810 809-00 0010
	Brushed Platinum	33 810 809-06 0010
	Platinum	33 810 809-08 0010
	Durabrass (23kt Gold)	33 810 809-09 0010
	Dark Chrome	33 810 809-19 0010
	Matte Black	33 810 809-33 0010
	Brushed Champagne (22kt Gold)	33 810 809-46 0010
	Champagne (22kt Gold)	33 810 809-47 0010
	Brushed Chrome	33 810 809-93 0010
	Brushed Dark Platinum	33 810 809-99 0010

Recommended article



**VAIA Soap dispenser with flange - 82 434 809-28**  
**Brushed Durabrass (23kt Gold)**

Recommended article



**VAIA Side spray set - Brushed Durabrass (23kt Gold)**    27 718 809-28

Recommended article



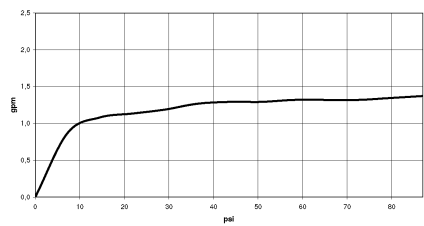
**VAIA AIR SWITCH operating button, trim parts only - Brushed Durabrass (23kt Gold)**    10 713 809-28



VAIA Single-lever mixer For sprayer / professional sprayer - Brushed Durabrass  
(23kt Gold)

33 810 809    Product version from 7/1/2023

Flow rate chart



Codes & Standards

California Energy Commission (CEC)	NSF372	NSF61
------------------------------------	--------	-------



## VAIA Single-lever mixer For sprayer / professional sprayer - Brushed Durabross (23kt Gold)

---

33 810 809 Product version from 7/1/2023

### Certificates

---

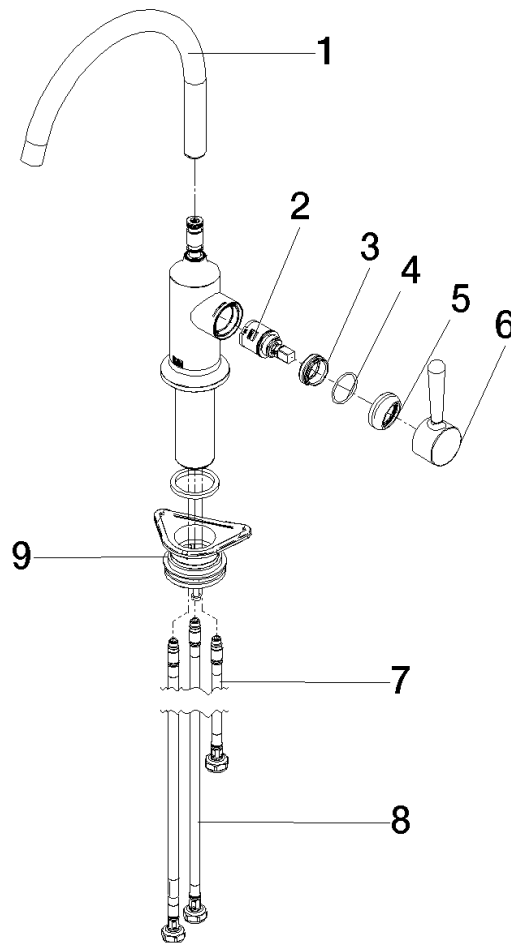
IAPMO\_N-4976

IAPMO\_6397

## VAIA Single-lever mixer For sprayer / professional sprayer - Brushed Durabross (23kt Gold)

33 810 809 Product version from 7/1/2023

Parts for other  
finishes can be found  
here: Chrome



### Spare parts list

Number	Item Number	Designation	Number of units	Lead time
1	90 28 22 313 00-28	spout	1	20
2	90 15 05 042 00 90	cartridge	1	2
3	09 24 04 266 90	nut	1	2
4	09 14 10 091 90	seal	1	2
5	90 28 30 052 00-28	cover	1	20
6	90 20 80 050 00-28	handle	1	-
Spare part can no longer be ordered, please order the replacement item				
7	04 30 04 100 00 90	hose	1	2
8	04 30 04 103 00 90	hose	2	2
9	04 23 10 044 08 90	fixing set	1	2