

VAIA Single-lever mixer For sprayer / professional sprayer - Brushed Champagne (22kt Gold)

VAIA

33 810 809 Product version from 7/1/2023



- 8" Projection
- Swiveling spout 360°
- Aerated stream
- Water flow rate limited to max. 1.5 gpm
- lead-free
- This product can help a building meet the requirements of Green Building Rating Systems, e.g. LEED®, BREEAM®, DGNB

(ADA)

Single-lever mixer for use with rinsers and professional sprayers

| | | |
|--|-------------------------------|--------------------|
| | Brushed Champagne (22kt Gold) | 33 810 809-46 0010 |
| | Chrome | 33 810 809-00 0010 |
| | Brushed Platinum | 33 810 809-06 0010 |
| | Platinum | 33 810 809-08 0010 |
| | Durabrass (23kt Gold) | 33 810 809-09 0010 |
| | Dark Chrome | 33 810 809-19 0010 |
| | Brushed Durabrass (23kt Gold) | 33 810 809-28 0010 |
| | Matte Black | 33 810 809-33 0010 |
| | Brushed Bronze | 33 810 809-42 0010 |
| | Champagne (22kt Gold) | 33 810 809-47 0010 |
| | Brushed Chrome | 33 810 809-93 0010 |
| | Brushed Dark Platinum | 33 810 809-99 0010 |

Recommended article



VAIA AIR SWITCH operating button, trim parts only - Brushed Champagne (22kt Gold) 10 713 809-46

Recommended article



VAIA Soap dispenser with flange - Brushed Champagne (22kt Gold) 82 434 809-46

Recommended article



VAIA Side spray set - Brushed Champagne (22kt Gold) 27 718 809-46



VAIA Single-lever mixer For sprayer / professional sprayer - Brushed
Champagne (22kt Gold)

VAIA

33 810 809 Product version from 7/1/2023

Codes & Standards

| | | | |
|--------|----------------|--|------|
| ADA | ASME A112.18.1 | California Energy Commission (CEC) | cUPC |
| NSF372 | NSF61 | | |

Certificates and sustainability

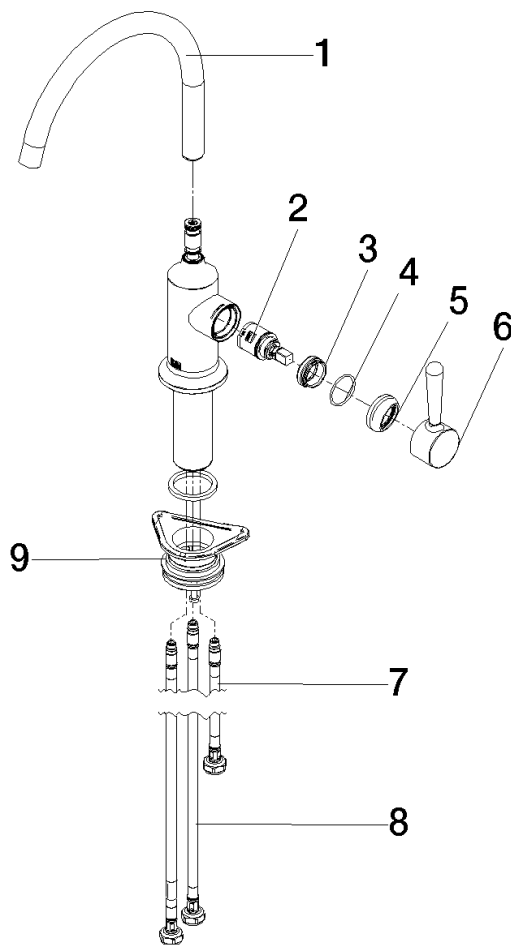
| | | |
|--------------|------------|--------------|
| IAPMO_N-4976 | IAPMO_6397 | IAPMO_4976 (|
|--------------|------------|--------------|

VAIA Single-lever mixer For sprayer / professional sprayer - Brushed Champagne (22kt Gold)

VAIA

33 810 809 Product version from 7/1/2023

Parts for other
finishes can be found
here: [Chrome](#)



Spare parts list

| Number | Item Number | Designation | Number of units | Lead time |
|--------|--------------------|-------------|-----------------|-----------|
| 8 | 04 30 04 103 00 90 | hose | 2.00 | 2 |
| 4 | 09 14 10 091 90 | seal | 1.00 | 2 |
| 3 | 09 24 04 266 90 | nut | 1.00 | 2 |
| 6 | 90 20 80 050 00-46 | handle | 1.00 | 30 |
| 7 | 04 30 04 100 00 90 | hose | 1.00 | 2 |
| 5 | 90 28 30 052 00-46 | cover | 1.00 | 30 |
| 9 | 04 23 10 044 08 90 | fixing set | 1.00 | 2 |
| 1 | 90 28 22 313 00-46 | spout | 1.00 | 30 |
| 2 | 90 15 05 042 00 90 | cartridge | 1.00 | 2 |