

VAIA Single-lever mixer For sprayer / professional sprayer - Brushed Dark Platinum

33 810 809 Product version from 7/1/2023



- 8" Projection
- Swiveling spout 360°
- Aerated stream
- Water flow rate limited to max. 1.5 gpm
- lead-free
- This product can help a building meet the requirements of Green Building Rating Systems, e.g. LEED®, BREEAM®, DGNB

(ADA)

Single-lever mixer for use with rinsers and professional sprayers

	Brushed Dark Platinum	33 810 809-99 0010
	Chrome	33 810 809-00 0010
	Brushed Platinum	33 810 809-06 0010
	Platinum	33 810 809-08 0010
	Durabrand (23kt Gold)	33 810 809-09 0010
	Dark Chrome	33 810 809-19 0010
	Brushed Durabrand (23kt Gold)	33 810 809-28 0010
	Matte Black	33 810 809-33 0010
	Brushed Champagne (22kt Gold)	33 810 809-46 0010
	Champagne (22kt Gold)	33 810 809-47 0010
	Brushed Chrome	33 810 809-93 0010

Recommended article



VAIA Soap dispenser with flange - Brushed Dark Platinum 82 434 809-99

Recommended article



VAIA Side spray set - Brushed Dark Platinum 27 718 809-99

Recommended article



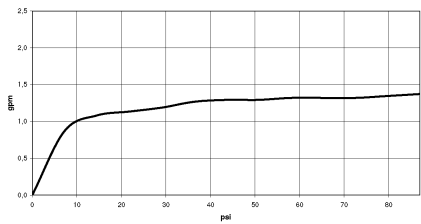
VAIA AIR SWITCH operating button, trim parts only - Brushed Dark Platinum 10 713 809-99



VAIA Single-lever mixer For sprayer / professional sprayer - Brushed Dark Platinum

33 810 809 Product version from 7/1/2023

Flow rate chart



Codes & Standards

ASME A112.18.1	California Energy Commission (CEC)	cUPC	NSF372
NSF61			



VAIA Single-lever mixer For sprayer / professional sprayer - Brushed Dark
Platinum

33 810 809 Product version from 7/1/2023

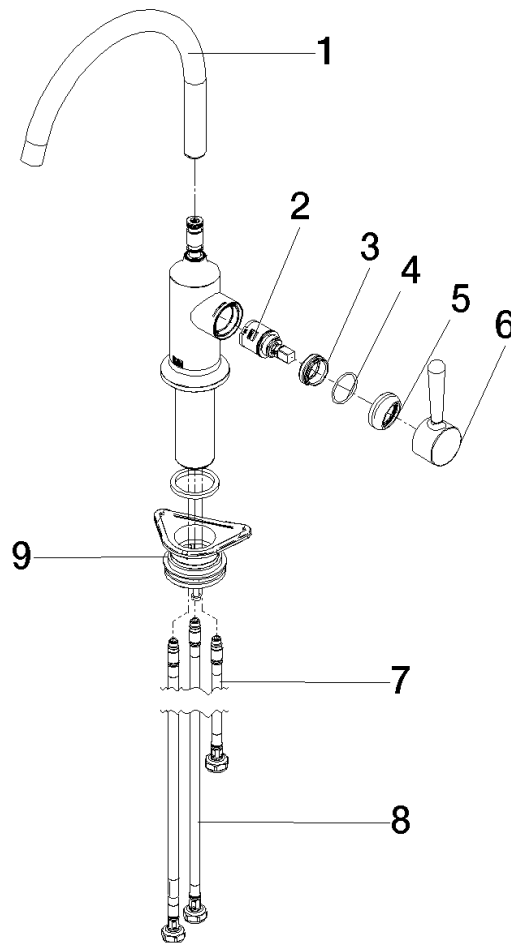
Certificates

IAPMO_N-4976 IAPMO_6397 IAPMO_4976 (

VAIA Single-lever mixer For sprayer / professional sprayer - Brushed Dark Platinum

33 810 809 Product version from 7/1/2023

Parts for other
finishes can be found
here: [Chrome](#)



Spare parts list

Number	Item Number	Designation	Number of units	Lead time
1	90 28 22 313 00-99	spout	1	20
2	90 15 05 042 00 90	cartridge	1	2
3	09 24 04 266 90	nut	1	2
4	09 14 10 091 90	seal	1	2
5	90 28 30 052 00-99	cover	1	20
6	90 20 80 050 00-99	handle	1	-
Spare part can no longer be ordered, please order the replacement item				
7	04 30 04 100 00 90	hose	1	2
8	04 30 04 103 00 90	hose	2	2
9	04 23 10 044 08 90	fixing set	1	2