

TARA Single-lever mixer - Dark Chrome

33 815 888



- 9-1/4" Projection
- Swiveling spout 360°
- Aerated stream
- Total height 15-3/4"
- Height to aerator/spout outlet 9"
- 1-3/8" hole diameter
- 2 x pressure hose with 3/8" compression fitting
- Water flow rate limited to max. 1.5 gpm
- lead-free
- This product can help a building meet the requirements of Green Building Rating Systems, e.g. LEED®, BREEAM®, DGNB

(ADA)

Combination with side spray set or profi side spray set not possible.

	Dark Chrome	33 815 888-19 0010
	Chrome	33 815 888-00 0010
	Brushed Platinum	33 815 888-06 0010
	Platinum	33 815 888-08 0010
	Durabrass (23kt Gold)	33 815 888-09 0010
	Brushed Durabrass (23kt Gold)	33 815 888-28 0010
	Matte Black	33 815 888-33 0010
	Brushed Bronze	33 815 888-42 0010
	Brushed Champagne (22kt Gold)	33 815 888-46 0010
	Champagne (22kt Gold)	33 815 888-47 0010
	Brushed Chrome	33 815 888-93 0010
	Brushed Dark Platinum	33 815 888-99 0010

Recommended article

Soap dispenser with flange - Dark Chrome 82 444 970-19



Recommended article

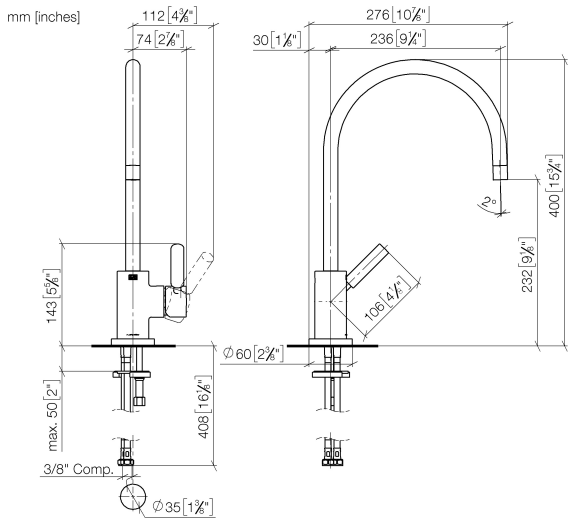
AIR SWITCH operating button, trim parts only - Dark Chrome	10 713 970-19
-----------------------------------------------------------------------	---------------



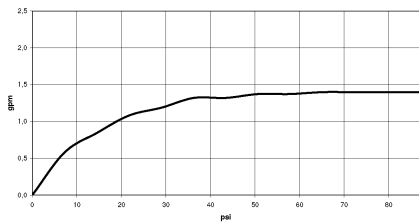


TARA Single-lever mixer - Dark Chrome

33 815 888



Flow rate chart



Codes & Standards

ADA	ASME A112.18.1	ASME A112.18.1/CSA B125.1	California Energy Commission (CEC)
cUPC	NSF/ANSI 372	NSF/ANSI/CAN 61	NSF372
NSF61			



TARA Single-lever mixer - Dark Chrome

33 815 888

Certificates

IAPMO_N-4976 IAPMO_6397 IAPMO_4976 (

TARA Single-lever mixer - Dark Chrome

33 815 888

Parts for other
finishes can be found
here: [Chrome](#)

