

TARA Single-lever mixer - Brushed Bronze

33 815 888 Product version from 9/7/2021



- 9-1/4" Projection
- Swiveling spout 360°
- Aerated stream
- Total height 15-3/4"
- Height to aerator/spout outlet 9"
- 1-3/8" hole diameter
- 2 x pressure hose with 3/8" compression fitting
- Water flow rate limited to max. 1.5 gpm
- lead-free
- This product can help a building meet the requirements of Green Building Rating Systems, e.g. LEED®, BREEAM®, DGNB

(ADA)

Combination with side spray set or profi side spray set not possible.

	Brushed Bronze	33 815 888-42 0010
	Chrome	33 815 888-00 0010
	Brushed Platinum	33 815 888-06 0010
	Platinum	33 815 888-08 0010
	Durabrass (23kt Gold)	33 815 888-09 0010
	Dark Chrome	33 815 888-19 0010
	Brushed Durabrass (23kt Gold)	33 815 888-28 0010
	Matte Black	33 815 888-33 0010
	Brushed Champagne (22kt Gold)	33 815 888-46 0010
	Champagne (22kt Gold)	33 815 888-47 0010
	Brushed Chrome	33 815 888-93 0010
	Brushed Dark Platinum	33 815 888-99 0010

Recommended article

Soap dispenser with flange -
Brushed Bronze

82 444 970-42



Recommended article

AIR SWITCH operating button,
trim parts only - Brushed Bronze

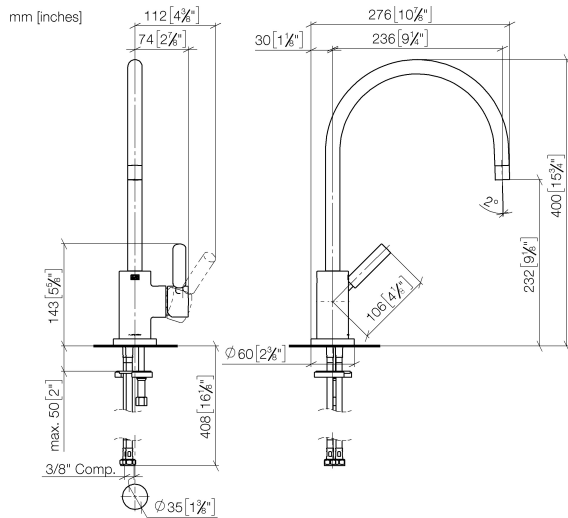
10 713 970-42



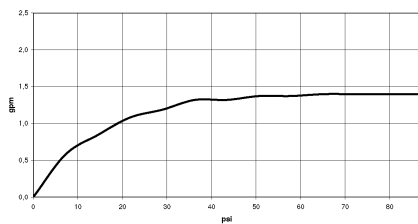


TARA Single-lever mixer - Brushed Bronze

33 815 888 Product version from 9/7/2021



Flow rate chart



Codes & Standards

ADA	ASME A112.18.1	ASME A112.18.1/CSA B125.1	California Energy Commission (CEC)
cUPC	NSF/ANSI 372	NSF/ANSI/CAN 61	NSF372
NSF61			



TARA Single-lever mixer - Brushed Bronze

33 815 888 Product version from 9/7/2021

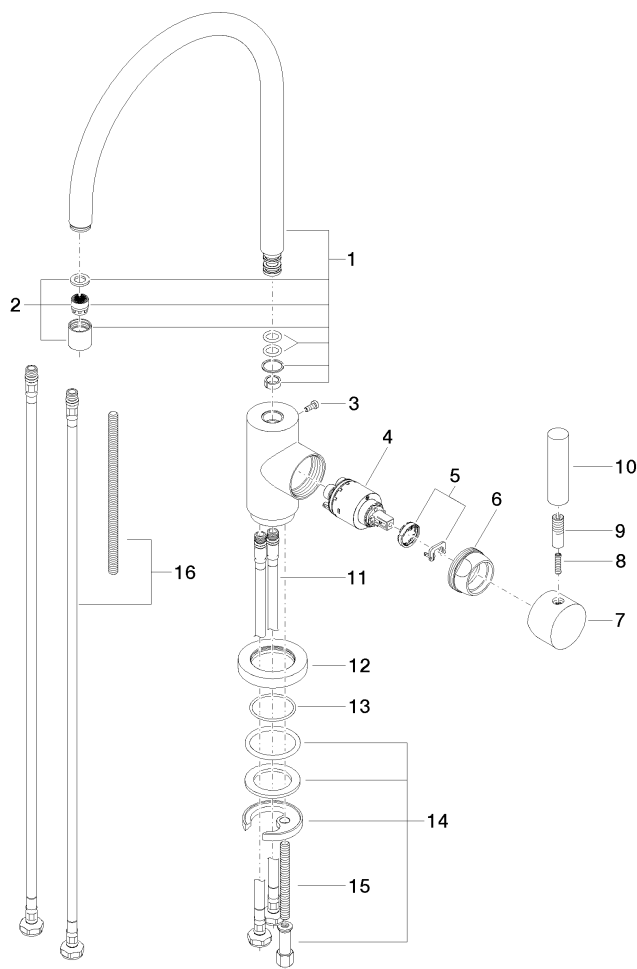
Certificates

IAPMO_N-4976 IAPMO_6397 IAPMO_4976 (

TARA Single-lever mixer - Brushed Bronze

33 815 888 Product version from 9/7/2021

Parts for other
finishes can be found
here: [Chrome](#)



Spare parts list

Number	Item Number	Designation	Number of units	Lead time
1	90 28 22 049 03-42	spout	1	30
2	90 23 01 028 00-42	aerator	1	30
3	09 30 30 054 90	screw	1	2
4	90 15 05 065 00 90	cartridge	1	2
5	90 28 10 148 00 90	accessories	1	2
6	09 24 04 107-42	nut	1	60
7	90 20 88 040 00-42	handle	1	30
8	09 31 11 010 90	pin	1	2
9	90 24 04 048 00-42	nipple	1	30
10	11 170 880-42	handle	1	-
Spare part can no longer be ordered, please order the replacement item				
11	04 30 04 106 00 90	hose	2	2
12	09 28 10 055-42	rosette	1	60
13	09 14 10 034 90	seal	1	2
14	04 30 11 038 00 90	fixing set	1	2
15	09 31 11 011 90	pin	1	2
25	12 803 970-90 0010	Extension set -	1	60