



LOT Single-lever mixer For sprayer / professional sprayer - Brushed Durabronze (23kt Gold)

LOT

33 826 680 Product version from 7/1/2023



- 9-1/4" Projection
 - Swiveling spout 360°
 - Aerated stream
 - Water flow rate limited to max. 1.5 gpm
 - lead-free
 - This product can help a building meet the requirements of Green Building Rating Systems, e.g. LEED®, BREEAM®, DGNB
- (ADA)
- Single-lever mixer for use with rinsers and professional sprayers

	Brushed Durabronze (23kt Gold)	33 826 680-28 0010
	Chrome	33 826 680-00 0010
	Brushed Platinum	33 826 680-06 0010
	Platinum	33 826 680-08 0010
	Dark Chrome	33 826 680-19 0010
	Brushed Bronze	33 826 680-42 0010
	Brushed Champagne (22kt Gold)	33 826 680-46 0010
	Champagne (22kt Gold)	33 826 680-47 0010
	Brushed Dark Platinum	33 826 680-99 0010

Recommended article

Soap dispenser without flange - 82 424 970-28
Brushed Durabronze (23kt Gold)



Recommended article

Strainer remote control with 10 712 970-28
turning knob - Brushed Durabronze (23kt Gold)



Recommended article

Side spray set - Brushed 27 723 970-28
Durabronze (23kt Gold)

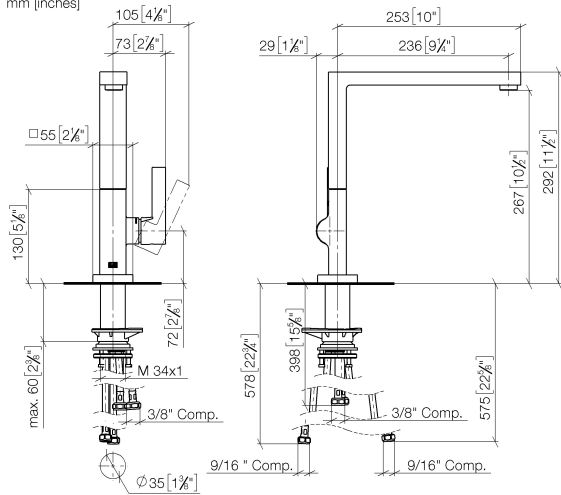




LOT Single-lever mixer For sprayer / professional sprayer - Brushed Durabronz
(23kt Gold)

LOT

33 826 680 Product version from 7/1/2023
mm [inches]



Codes & Standards

ADA	California Energy Commission (CEC)	NSF372	NSF61
-----	--	--------	-------

Certificates and sustainability

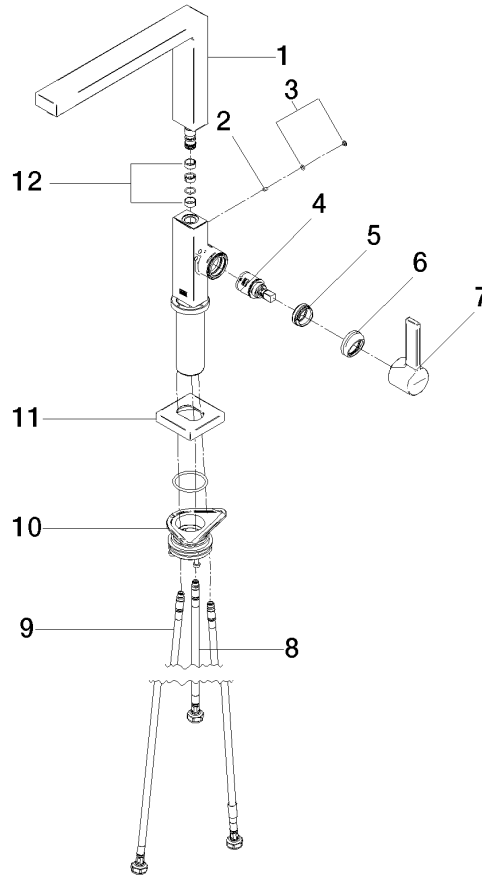
IAPMO_6397 IAPMO_N-4976

LOT Single-lever mixer For sprayer / professional sprayer - Brushed Durabronz (23kt Gold)

LOT

33 826 680 Product version from 7/1/2023

Parts for other
finishes can be found
here: Chrome



Spare parts list

Number	Item Number	Designation	Number of units	Lead time
8	04 30 04 100 00 90	hose	1.00	2
7	90 20 86 004 00-28	handle	1.00	20
3	90 31 20 087 00-28	plug	1.00	20
5	09 24 04 266 90	nut	1.00	2
10	90 30 10 057 00 90	fixing set	1.00	2
11	90 27 86 004 00-28	rosette	1.00	20
12	90 28 22 217 01-28	spout	1.00	20
2	09 31 11 044 90	pin	1.00	2
9	04 30 04 103 00 90	hose	2.00	2
4	90 15 05 042 00 90	cartridge	1.00	2
1	90 11 06 218 00-28	spout	1.00	20
6	90 28 30 052 00-28	cover	1.00	20