

VAIA Single-lever mixer For sprayer / professional sprayer - Matte Black

33 826 809 Product version from 7/1/2023



- 9-1/2" Projection
- Swiveling spout 360°
- Aerated stream
- Water flow rate limited to max. 1.5 gpm
- lead-free
- This product can help a building meet the requirements of Green Building Rating Systems, e.g. LEED®, BREEAM®, DGNB

(ADA)

Single-lever mixer for use with rinsers and professional sprayers

	Matte Black	33 826 809-33 0010
	Chrome	33 826 809-00 0010
	Brushed Platinum	33 826 809-06 0010
	Platinum	33 826 809-08 0010
	Durabrand (23kt Gold)	33 826 809-09 0010
	Dark Chrome	33 826 809-19 0010
	Brushed Durabrand (23kt Gold)	33 826 809-28 0010
	Brushed Bronze	33 826 809-42 0010
	Brushed Champagne (22kt Gold)	33 826 809-46 0010
	Champagne (22kt Gold)	33 826 809-47 0010
	Brushed Chrome	33 826 809-93 0010
	Brushed Dark Platinum	33 826 809-99 0010

Recommended article

VAIA Side spray set - Matte Black 27 718 809-33



Recommended article

VAIA AIR SWITCH operating button, trim parts only - Matte Black 10 713 809-33



Recommended article

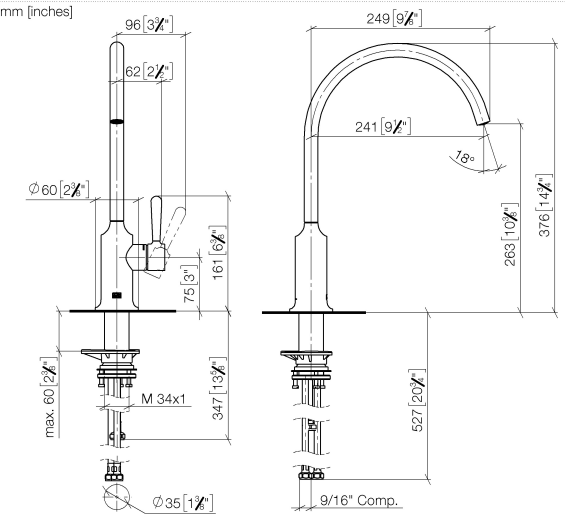
VAIA Soap dispenser with flange - Matte Black 82 434 809-33



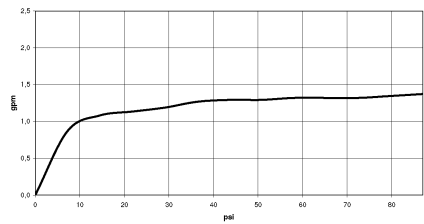


VAIA Single-lever mixer For sprayer / professional sprayer - Matte Black

33 826 809 Product version from 7/1/2023



Flow rate chart



Codes & Standards

ASME A112.18.1	California Energy Commission (CEC)	cUPC	NSF372
NSF61			



VAIA Single-lever mixer For sprayer / professional sprayer - Matte Black

33 826 809 Product version from 7/1/2023

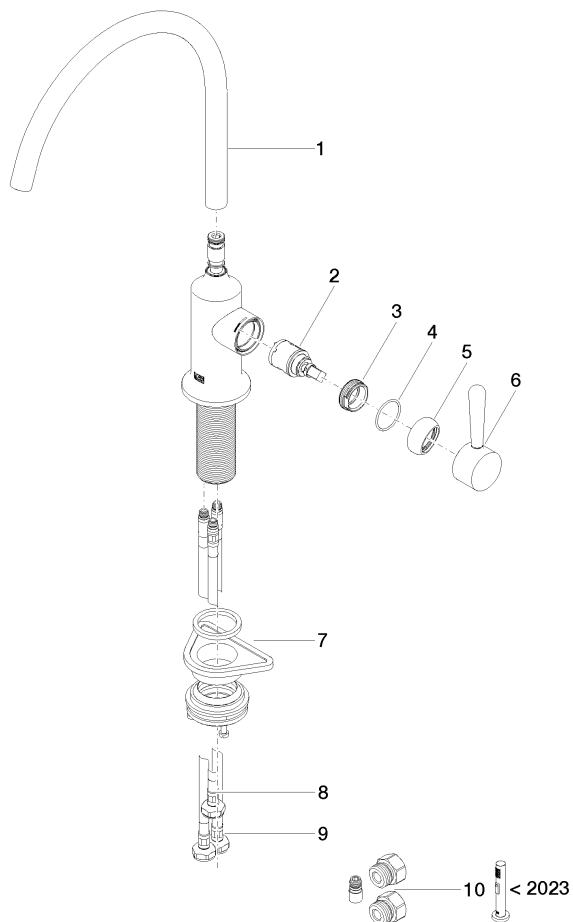
Certificates

IAPMO_N-4976 IAPMO_6397 IAPMO_4976 (

VAIA Single-lever mixer For sprayer / professional sprayer - Matte Black

33 826 809 Product version from 7/1/2023

Parts for other
finishes can be found
here: [Chrome](#)



Spare parts list

Number	Item Number	Designation	Number of units	Lead time
1	90 28 22 396 01-33	spout	1	30
2	90 15 05 042 00 90	cartridge	1	2
3	09 24 04 266 90	nut	1	2
4	09 14 10 091 90	seal	1	2
5	90 28 30 052 00-33	cover	1	30
6	90 20 80 050 00-33	handle	1	-
Spare part can no longer be ordered, please order the replacement item				
7	04 23 10 044 08 90	fixing set	1	2
8	04 30 04 100 00 90	hose	1	2
9	04 30 04 103 00 90	hose	2	2
10	90 17 09 046 14 90	conversion kit	1	2