

## ELIO Single-lever mixer with pull-out spout - Platinum

ELIO

33 840 790 Product version from 12/31/2013 to 5/15/2020



- 9-1/4" Projection
- Swiveling spout 360°
- Aerated stream
- Total height 13-1/4"
- Height to aerator/spout outlet 11-3/4"
- 1-3/8" hole diameter
- 2 x pressure hose with 3/8" compression fitting
- Fabric braided spray hose 59"
- Water flow rate limited to max. 1.5 gpm
- lead-free
- This product can help a building meet the requirements of Green Building Rating Systems, e.g. LEED®, BREEAM®, DGNB

(ADA)

Combination with side spray set or profi side spray set not possible.

|  |                                |                    |
|--|--------------------------------|--------------------|
|   | Platinum                       | 33 840 790-08 0010 |
|   | Chrome                         | 33 840 790-00 0010 |
|   | Brushed Platinum               | 33 840 790-06 0010 |
|   | Dark Chrome                    | 33 840 790-19 0010 |
|   | Brushed Durabronze (23kt Gold) | 33 840 790-28 0010 |
|   | Brushed Bronze                 | 33 840 790-42 0010 |
|   | Brushed Champagne (22kt Gold)  | 33 840 790-46 0010 |
|   | Champagne (22kt Gold)          | 33 840 790-47 0010 |
|   | Brushed Chrome                 | 33 840 790-93 0010 |
|  | Brushed Dark Platinum          | 33 840 790-99 0010 |

### Recommended article

**AIR SWITCH operating button, trim parts only - Platinum** 10 713 970-08



### Recommended article

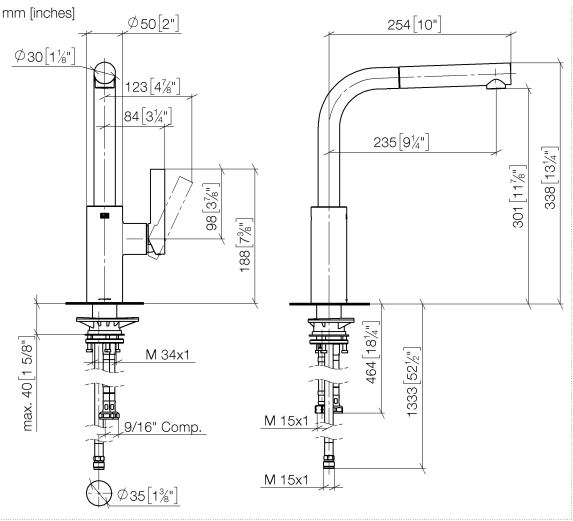
**Soap dispenser without flange - Platinum** 82 424 970-08



**ELIO Single-lever mixer with pull-out spout - Platinum**

ELIO

33 840 790 Product version from 12/31/2013 to 5/15/2020



**Codes & Standards**

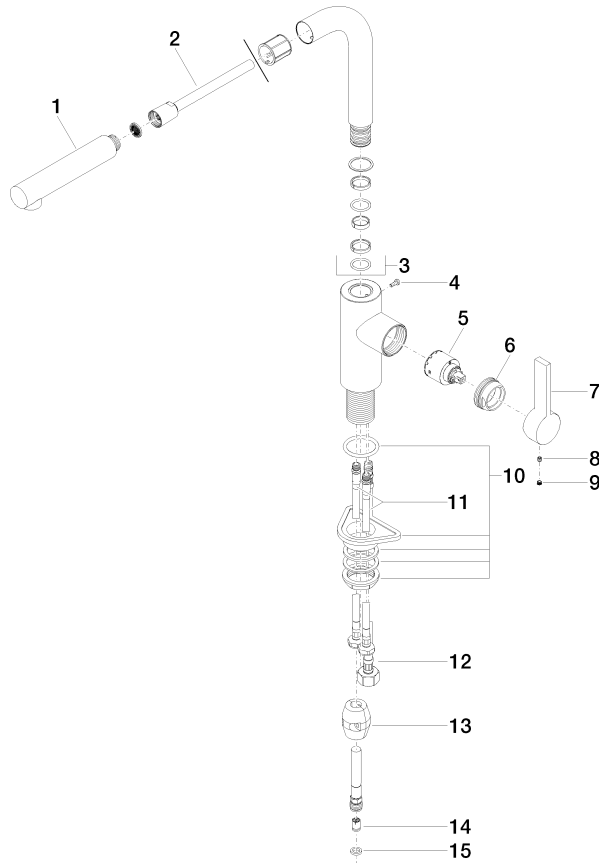
|     |  |        |       |
|-----|--|--------|-------|
| ADA | California Energy<br>Commission<br>(CEC) | NSF372 | NSF61 |
|-----|--|--------|-------|

**Certificates and sustainability**

IAPMO\_6397 IAPMO\_N-4976

33 840 790 Product version from 12/31/2013 to 5/15/2020

Parts for other  
finishes can be found  
here: [Chrome](#)



## Spare parts list

| Number | Item Number        | Designation         | Number of units | Lead time |
|--------|--------------------|---------------------|-----------------|-----------|
| 6      | 09 24 04 141-08    | nut                 | 1.00            | 40        |
| 13     | 04 21 50 005 00 90 | accessories         | 1.00            | 2         |
| 4      | 09 30 30 054 90    | screw               | 1.00            | 2         |
| 10     | 04 23 10 044 02 90 | fixing set          | 1.00            | 2         |
| 7      | 09 20 79 040-08    | handle              | 1.00            | 40        |
| 12     | 04 30 04 029 00 90 | hose                | 1.00            | 2         |
| 14     | 09 23 01 096 90    | back-flow preventer | 1.00            | 2         |
| 3      | 90 28 22 186 00-08 | spout               | 1.00            | 40        |
| 11     | 04 30 04 106 00 90 | hose                | 1.00            | 2         |
| 1      | 04 12 11 106 00-08 | shower              | 1.00            | 40        |
| 8      | 90 31 11 030 00 90 | pin                 | 1.00            | 2         |
| 9      | 90 31 20 109 00 90 | plug                | 1.00            | 2         |
| 15     | 90 14 20 019 00 90 | seal                | 1.00            | 2         |
| 5      | 90 15 05 045 00 90 | cartridge           | 1.00            | 2         |
| 2      | 90 30 02 062 00-08 | hose                | 1.00            | 40        |