

ELIO Single-lever mixer with pull-out spout - Brushed Chrome

33 840 790 Product version from 6/1/2022



- 9-1/4" Projection
- Swiveling spout 360°
- Aerated stream
- Total height 13-1/4"
- Height to aerator/spout outlet 11-3/4"
- 1-3/8" hole diameter
- 2 x pressure hose with 3/8" compression fitting
- Fabric braided spray hose 59"
- Water flow rate limited to max. 1.5 gpm
- lead-free
- This product can help a building meet the requirements of Green Building Rating Systems, e.g. LEED®, BREEAM®, DGNB

(ADA)

Combination with side spray set or profi side spray set not possible.

	Brushed Chrome	33 840 790-93 0010
	Chrome	33 840 790-00 0010
	Brushed Platinum	33 840 790-06 0010
	Platinum	33 840 790-08 0010
	Dark Chrome	33 840 790-19 0010
	Brushed Durabronze (23kt Gold)	33 840 790-28 0010
	Brushed Bronze	33 840 790-42 0010
	Brushed Champagne (22kt Gold)	33 840 790-46 0010
	Champagne (22kt Gold)	33 840 790-47 0010
	Brushed Dark Platinum	33 840 790-99 0010

Recommended article

Soap dispenser without flange - 82 424 970-93
Brushed Chrome



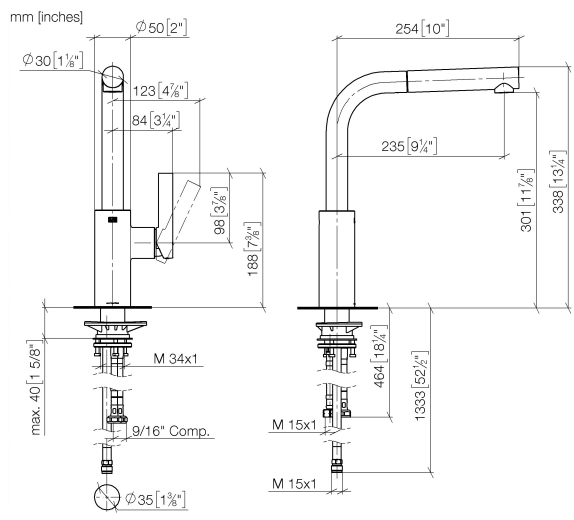
Recommended article

AIR SWITCH operating button, 10 713 970-93
trim parts only - Brushed Chrome

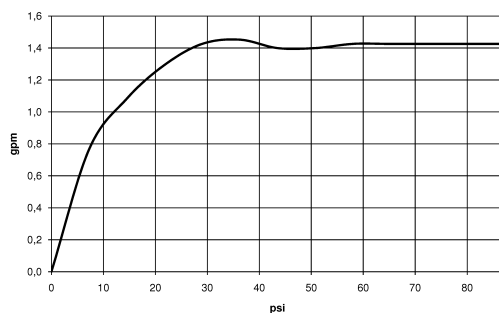


ELIO Single-lever mixer with pull-out spout - Brushed Chrome

33 840 790 Product version from 6/1/2022



Flow rate chart



Codes & Standards

ADA	ASME A112.18.1/CSA B125.1	California Energy Commission (CEC)	NSF/ANSI 372
NSF/ANSI/CAN 61	NSF372	NSF61	



ELIO Single-lever mixer with pull-out spout - Brushed Chrome

33 840 790 Product version from 6/1/2022

Certificates

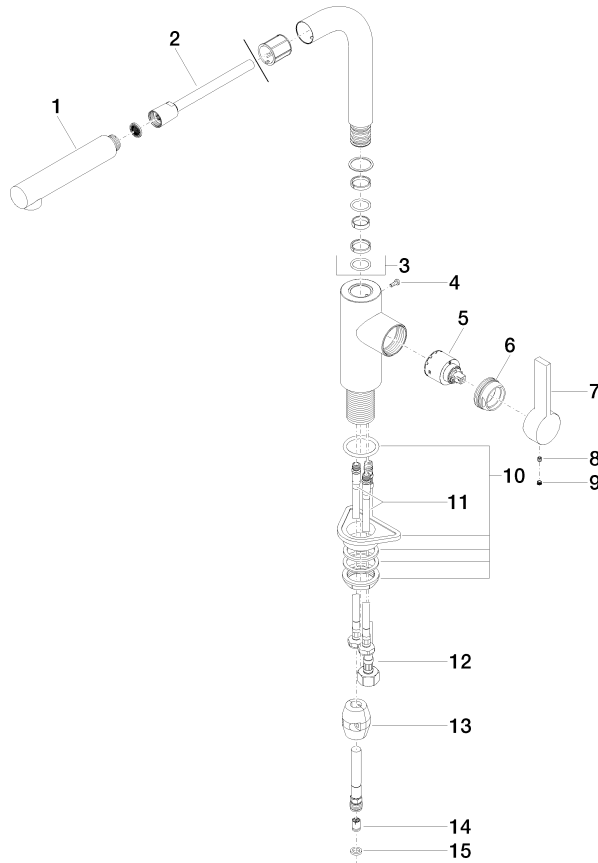
IAPMO_6397

IAPMO_N-4976

ELIO Single-lever mixer with pull-out spout - Brushed Chrome

33 840 790 Product version from 6/1/2022

Parts for other
finishes can be found
here: [Chrome](#)



Spare parts list

Number	Item Number	Designation	Number of units	Lead time
1	04 12 11 106 00-93	shower	1	20
2	90 30 02 062 00-93	hose	1	20
3	90 28 22 186 00-93	spout	1	20
4	09 30 30 054 90	screw	1	2
5	90 15 05 045 00 90	cartridge	1	2
6	09 24 04 141-93	nut	1	20
7	09 20 79 040-93	handle	1	60
8	90 31 11 030 00 90	pin	1	2
9	90 31 20 109 00 90	plug	1	2
10	04 23 10 044 02 90	fixing set	1	2
11	04 30 04 106 00 90	hose	1	2
12	04 30 04 029 00 90	hose	1	2
13	04 21 50 005 00 90	accessories	1	2
14	09 23 01 096 90	back-flow preventer	1	2
15	90 14 20 019 00 90	seal	1	2