






DORNBRAUCH LYV Single-lever mixer with pull-out spout - Soft Black

DORNBRAUCH LYV

33 845 110



- 9-3/8" Projection
- Swiveling spout 120°
- Aerated stream and spray mode
- Fabric braided spray hose 59"
- Water flow rate limited to max. 1.3 gpm
- lead-free

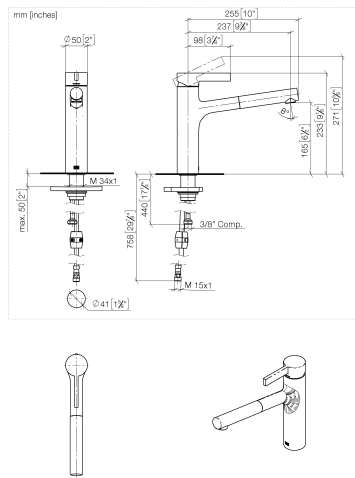
| | | |
|---|----------------|--------------------|
|  | Soft Black | 33 845 110-69 0010 |
|  | Chrome | 33 845 110-00 0010 |
|  | Brushed Nickel | 33 845 110-70 0010 |



DORNBRACHT LYV Single-lever mixer with pull-out spout - Soft Black

DORNBRACHT
LYV

33 845 110



Codes & Standards

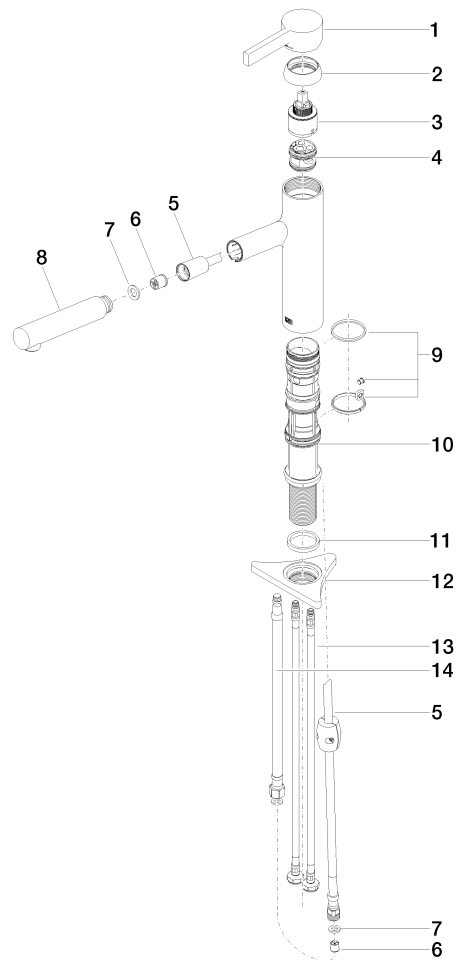
| | | | |
|----------------|------------------------------------|------|--------|
| ASME A112.18.1 | California Energy Commission (CEC) | cUPC | NSF372 |
| NSF61 | | | |

Certificates and sustainability

IAPMO_N-4976 IAPMO_6397 IAPMO_4976 (

33 845 110

Parts for other
finishes can be found
here: [Chrome](#)



Spare parts list

| Number | Item Number | Designation | Number of units | Lead time |
|--------|--------------------|-----------------------------|-----------------|-----------|
| 3 | 90 15 05 067 00 90 | cartridge | 1.00 | 2 |
| 7 | 90 14 05 081 00 90 | seal | 1.00 | 2 |
| 10 | 90 30 01 211 01 90 | shaft | 1.00 | 2 |
| 2 | 90 28 30 010 00-69 | cover | 1.00 | 2 |
| 4 | 90 18 40 227 00 90 | insert | 1.00 | 2 |
| 6 | 90 23 01 051 01 90 | flow reducer | 1.00 | 2 |
| 11 | 90 14 05 080 00 90 | seal | 1.00 | 2 |
| 13 | 04 30 04 102 00 90 | Flexible supply line 3/8" - | 2.00 | 2 |
| 12 | 90 23 10 003 00 90 | fixing set | 1.00 | 2 |
| 5 | 90 30 02 101 00 90 | hose | 1.00 | 2 |
| 14 | 90 30 04 110 00 90 | hose | 1.00 | 2 |
| 8 | 90 12 11 181 01-69 | shower | 1.00 | 2 |
| 9 | 90 14 15 062 00 90 | gasket kit | 1.00 | 2 |
| 1 | 90 20 81 001 00-69 | handle | 1.00 | 2 |