

## TARA ULTRA PIVOT Single-lever mixer - Chrome

TARA ULTRA

33 845 875 Product version from 3/11/2013 to 10/27/2020



- 21-3/4" Projection
- Swiveling spout 360°
- Aerated stream
- Total height 14-5/8"
- Height to aerator/spout outlet 11-3/8"
- Flange 2-1/8"
- 1-1/8" hole diameter
- 2 x pressure hose with 3/8" compression fitting
- Water flow rate limited to max. 1.5 gpm
- lead-free
- This product can help a building meet the requirements of Green Building Rating Systems, e.g. LEED®, BREEAM®, DGNB

(ADA)

Combination with side spray set or profi side spray set not possible.

	Chrome	33 845 875-00 0010
	Brushed Platinum	33 845 875-06 0010
	Platinum	33 845 875-08 0010
	Durabronze (23kt Gold)	33 845 875-09 0010
	Dark Chrome	33 845 875-19 0010
	Brushed Durabronze (23kt Gold)	33 845 875-28 0010
	Brushed Bronze	33 845 875-42 0010
	Brushed Champagne (22kt Gold)	33 845 875-46 0010
	Champagne (22kt Gold)	33 845 875-47 0010
	Brushed Chrome	33 845 875-93 0010
	Brushed Dark Platinum	33 845 875-99 0010

### Recommended article

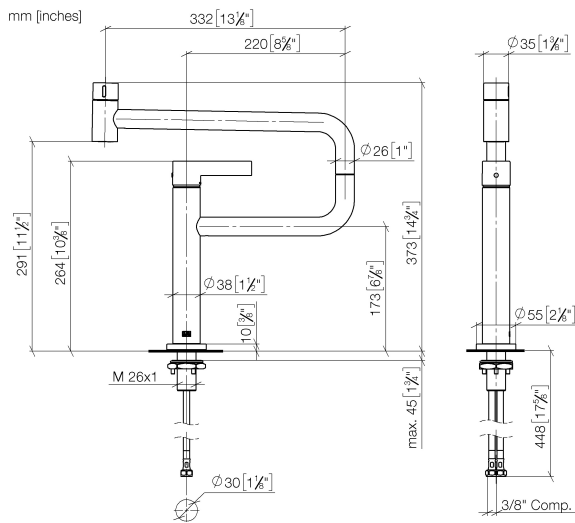
**AIR SWITCH operating button, trim parts only - Chrome** 10 713 970-00



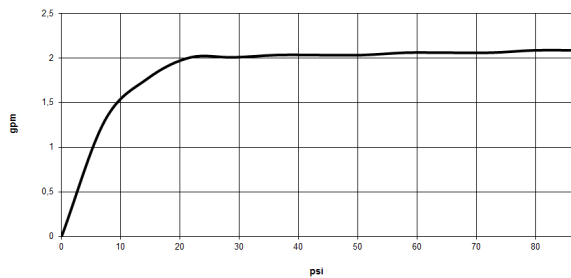
### Recommended article

**Soap dispenser with flange - Chrome** 82 444 970-00





Flow rate chart



## Codes & Standards

ADA

California Energy  
Commission  
(CEC)

NSF372

NSF61



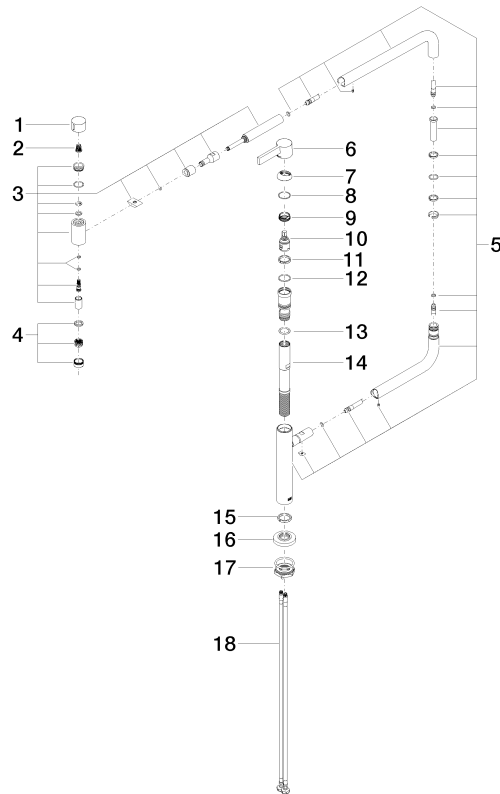
## TARA ULTRA PIVOT Single-lever mixer - Chrome

TARA ULTRA

33 845 875 Product version from 3/11/2013 to 10/27/2020

### Certificates and sustainability

IAPMO\_N-4976 IAPMO\_6397



## Spare parts list

Number	Item Number	Designation	Number of units	Lead time
	13 09 14 10 081 90	seal	1.00	2
	7 09 28 30 013-00	cover	1.00	10
	5 90 28 22 257 00-00	joint	1.00	10
	8 09 14 10 091 90	seal	1.00	2
	15 09 28 10 159 90	ring	1.00	2
	2 90 12 12 002 00 90	fixing cap	1.00	2
	10 90 15 05 042 00 90	cartridge	1.00	2
	1 09 20 62 025-00	handle	1.00	10
	16 09 27 87 033-00	rosette	1.00	10
	3 90 19 87 001 00-00	spout	1.00	10
	18 04 30 04 103 00 90	hose	2.00	2
	11 09 28 10 156 90	ring	1.00	2
	14 09 30 01 126 90	connection	1.00	2
	17 04 30 11 085 87 90	fixing set	1.00	2
	6 90 20 87 004 00-00	handle	1.00	10
	9 09 24 04 266 90	nut	1.00	2
	4 90 23 01 026 08-00	aerator	1.00	10
	12 90 14 10 063 00 90	seal	1.00	2