

VAIA Single-lever mixer pull-down with spray function - Brushed Durabrand (23kt Gold)

VAIA

33 870 809 Product version from 7/1/2023



- 9-1/2" Projection
- Swiveling spout 360°
- Optional restricted swivel available with swivel limiter set 12 823 970 90
- Aerated stream and spray mode
- Total height 16-3/8"
- 9" height to aerator/spout outlet
- 1-3/8" hole diameter
- 2 x pressure hose with 3/8" compression fitting
- 59" metal shower hose
- Sprayface with descaling system
- Water flow rate limited to max. 1.5 gpm
- lead-free
- Spray types can be changed while the water is running
- This product can help a building meet the requirements of Green Building Rating Systems, e.g. LEED®, BREEAM®, DGNB

(ADA)

Internal backflow preventer.

Switch back and forth between aerator and spray mode while water is running.

	Brushed Durabrand (23kt Gold)	33 870 809-28 0010
	Chrome	33 870 809-00 0010
	Brushed Platinum	33 870 809-06 0010
	Platinum	33 870 809-08 0010
	Durabrand (23kt Gold)	33 870 809-09 0010
	Dark Chrome	33 870 809-19 0010
	Matte Black	33 870 809-33 0010
	Brushed Bronze	33 870 809-42 0010
	Brushed Champagne (22kt Gold)	33 870 809-46 0010
	Champagne (22kt Gold)	33 870 809-47 0010
	Brushed Chrome	33 870 809-93 0010
	Brushed Dark Platinum	33 870 809-99 0010

Recommended article

Swivel limiter set -

12 823 970 90



Recommended article

VAIA AIR SWITCH operating button, trim parts only - Brushed Durabrand (23kt Gold)

10 713 809-28



Recommended article

VAIA Soap dispenser with flange - Brushed Durabrand (23kt Gold)

82 434 809-28



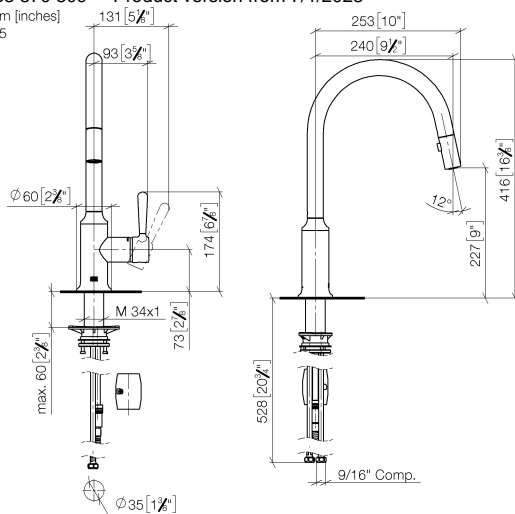


VAIA Single-lever mixer pull-down with spray function - Brushed Durabronss (23kt Gold)

VAIA

33 870 809 Product version from 7/1/2023

mm [inches]
1:5



Codes & Standards

ADA

California Energy
Commission
(CEC)

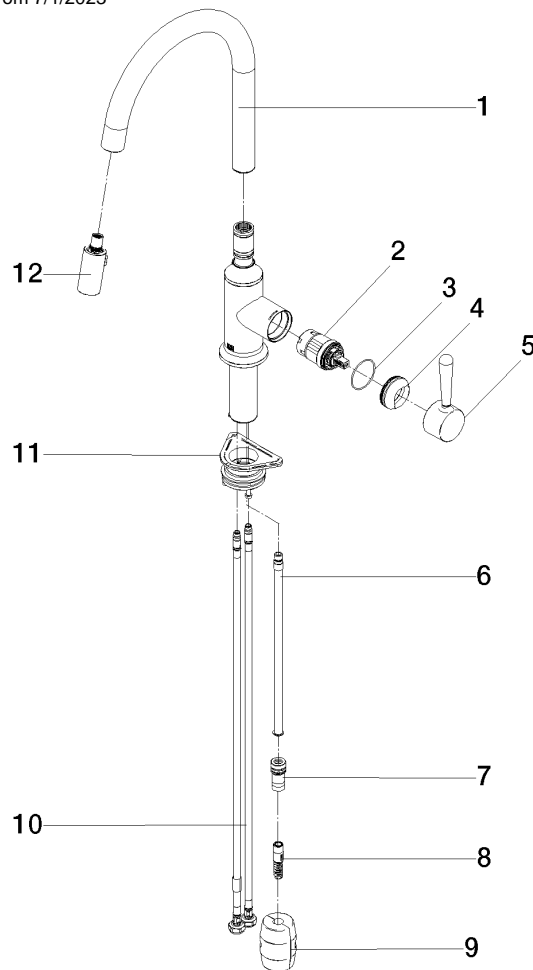
NSF372

NSF61

Certificates and sustainability

IAPMO_N-4976

IAPMO_6397



Spare parts list

Number	Item Number	Designation	Number of units	Lead time
5	90 20 80 052 00-28	handle	1.00	20
3	09 14 10 190 90	seal	1.00	2
2	90 15 05 064 05 90	cartridge	1.00	2
4	09 28 30 030-28	cover	1.00	20
7	90 24 03 253 01 90	adaptor	1.00	2
6	04 28 20 067 00 90	pipe	1.00	2
1	90 28 22 397 00-28	spout	1.00	20
9	04 21 50 010 00 90	accessories	1.00	2
12	90 18 40 317 00-28	shower	1.00	20
11	04 30 11 040 00 90	fixing set	1.00	2
8	04 30 02 120 00-85	hose	1.00	10
10	04 30 04 103 00 90	hose	2.00	2