

META SQUARE Single-lever mixer pull-down with spray function - Brushed Platinum

33 870 861 Product version from 2/1/2023



- 9-1/2" Projection
- Swiveling spout 360°
- Optional restricted swivel available with swivel limiter set 12 823 970 90
- Laminar and spray function
- Total height 15-1/4"
- 7-1/4" height to aerator/spout outlet
- 1-3/8" hole diameter
- 2 x pressure hose with 3/8" compression fitting
- 59" metal shower hose
- Sprayface with descaling system
- Water flow rate limited to max. 1.5 gpm
- lead-free
- Spray types can be changed while the water is running
- This product can help a building meet the requirements of Green Building Rating Systems, e.g. LEED®, BREEAM®, DGNB

(ADA)

Internal backflow preventer.

Push button locks into spray mode when pressed.
To switch back to laminar flow the water must be turned off.

	Brushed Platinum	33 870 861-06 0010
	Chrome	33 870 861-00 0010
	Platinum	33 870 861-08 0010
	Durabrand (23kt Gold)	33 870 861-09 0010
	Dark Chrome	33 870 861-19 0010
	Brushed Durabrand (23kt Gold)	33 870 861-28 0010
	Matte Black	33 870 861-33 0010
	Brushed Bronze	33 870 861-42 0010
	Brushed Champagne (22kt Gold)	33 870 861-46 0010
	Champagne (22kt Gold)	33 870 861-47 0010
	Brushed Chrome	33 870 861-93 0010
	Brushed Dark Platinum	33 870 861-99 0010

Recommended article

Swivel limiter set -

12 823 970 90



Recommended article

AIR SWITCH operating button, trim parts only - Brushed Platinum

10 713 970-06



Recommended article

Soap dispenser without flange - Brushed Platinum

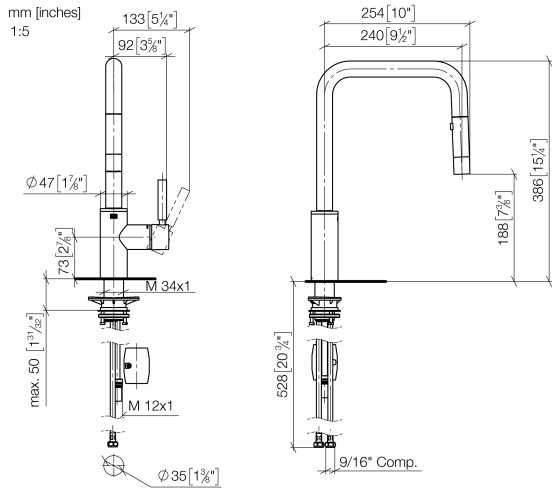
82 424 970-06





META SQUARE Single-lever mixer pull-down with spray function - Brushed Platinum

33 870 861 Product version from 2/1/2023



Flow rate chart



Codes & Standards

ASME A112.18.1	California Energy Commission (CEC)	cUPC	NSF372
NSF61			



META SQUARE Single-lever mixer pull-down with spray function - Brushed
Platinum

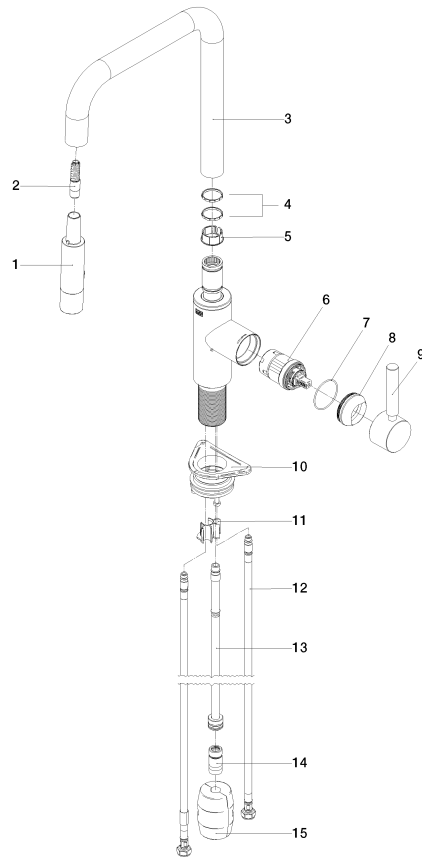
33 870 861 Product version from 2/1/2023

Certificates

IAPMO_6397 IAPMO_N-4976 IAPMO_4976 (

**META SQUARE Single-lever mixer pull-down with spray function - Brushed
Platinum**

33 870 861 Product version from 2/1/2023



Spare parts list

Number	Item Number	Designation	Number of units	Lead time
1	90 12 11 148 00-06	shower	1	10
2	04 30 02 120 00-85	hose	1	10
3	90 28 22 308 00-06	spout	1	-
Spare part can no longer be ordered, please order the replacement item				
4	09 28 10 160 90	ring	2	2
5	09 18 40 186 90	sleeve	1	2
6	90 15 05 064 05 90	cartridge	1	2
7	09 14 10 190 90	seal	1	2
8	09 28 30 030-06	cover	1	10
9	90 20 66 027 00-06	handle	1	10
10	04 30 11 040 00 90	fixing set	1	2
11	09 20 93 056 90	insert	1	2
12	04 30 04 103 00 90	hose	2	2
13	04 28 20 067 00 90	pipe	1	2
14	90 24 03 253 01 90	adaptor	1	2
15	04 21 50 010 00 90	accessories	1	2